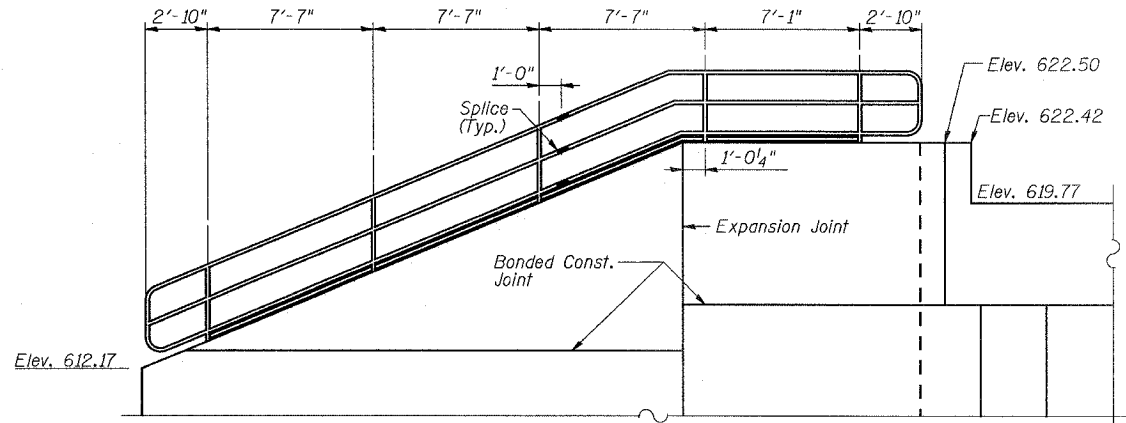


STATE OF ILLINOIS  
DEPARTMENT OF TRANSPORTATION

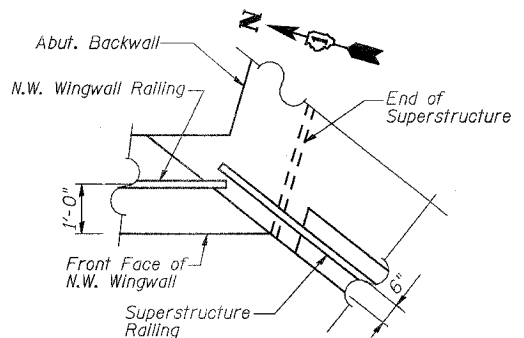
ROUTE NO.	SECTION	COUNTY	TOTAL SHEETS	SHEET NO.
F.A.P. 351	2008-001VB	COOK	579	379
FED. ROAD DIST. NO. 7 ILLINOIS FED. AID PROJECT				

SHEET NO. 31  
37 SHEETS

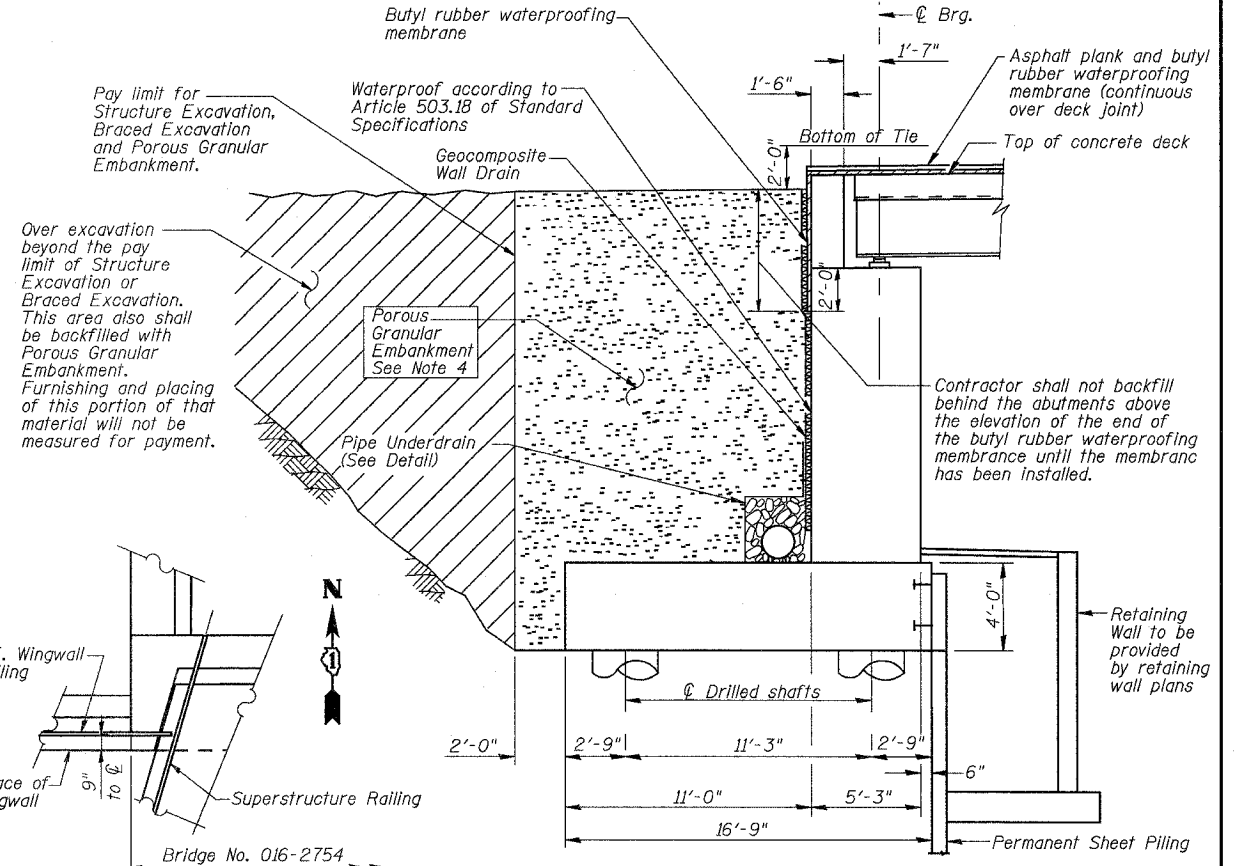
CONTRACT NO. 60E10



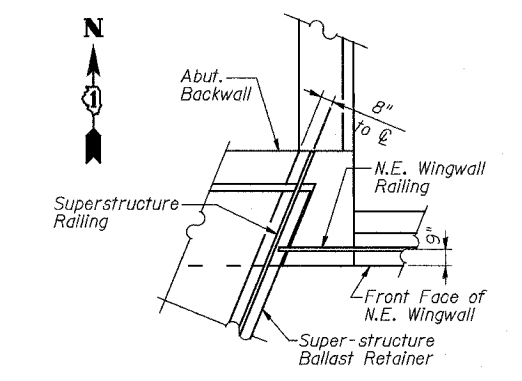
**NORTHWEST WINGWALL ELEVATION**



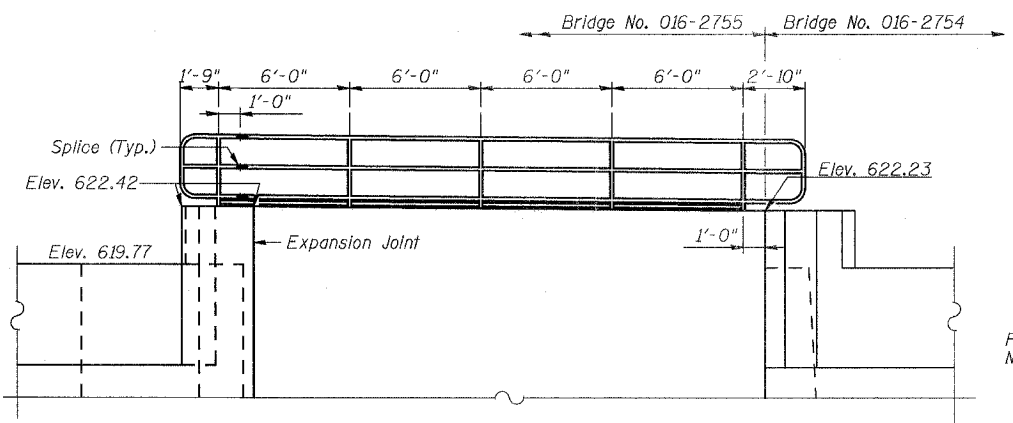
**CORNER PLAN OF N.W. WINGWALL & SUPERSTRUCTURE**



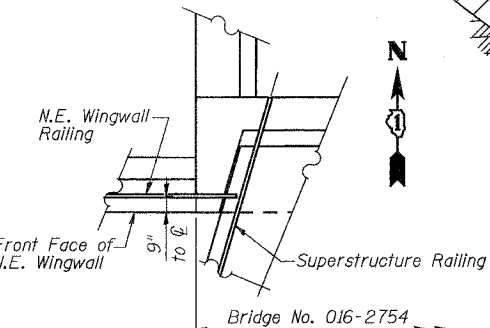
**TYPICAL SECTION THRU ABUTMENT**



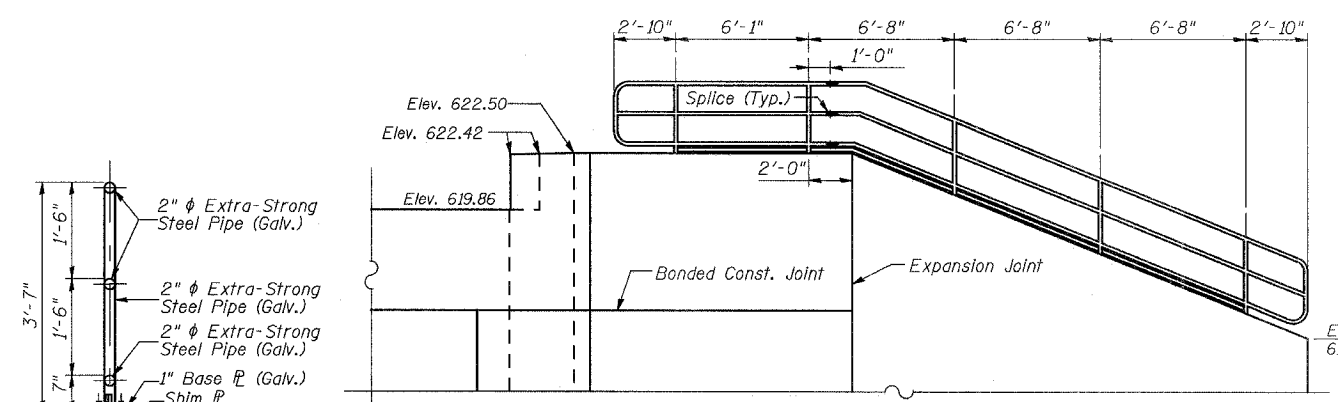
**CORNER PLAN OF N.E. WINGWALL & SUPERSTRUCTURE**



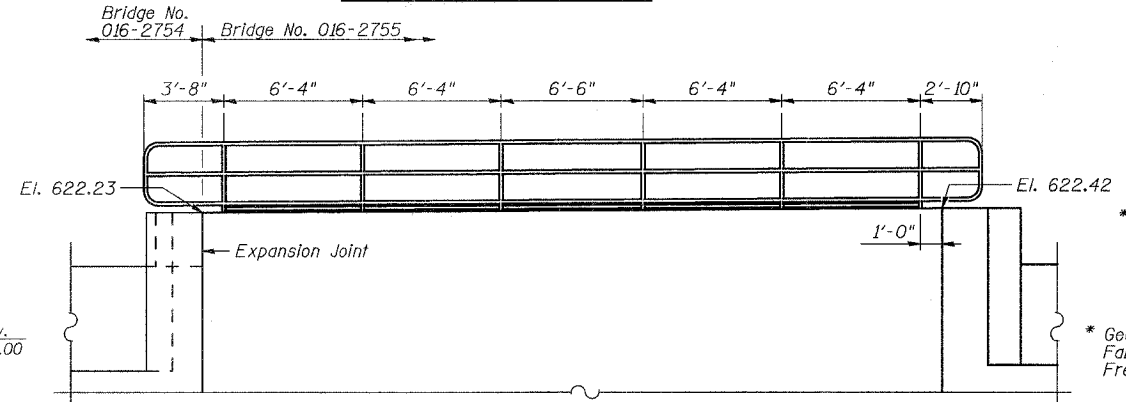
**NORTHEAST WINGWALL ELEVATION**



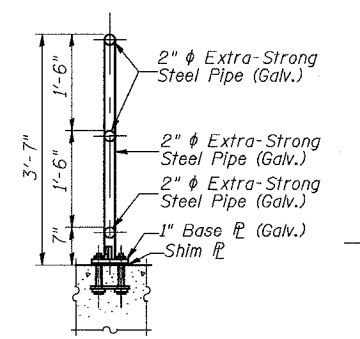
**INTERFACE PLAN OF N.E. WINGWALL & BRIDGE NO. 016-2754**



**SOUTHWEST WINGWALL ELEVATION**



**SOUTHEAST WINGWALL ELEVATION**



**TYPICAL RAILING SECTION**

**Notes:**

- See Abutment Bills of Material on Sheets 21 of 37 and 27 of 37 for Quantities of Porous Granular Embankment and Geocomposite Wall Drain.
- See Sheet 24 of U.S. 6 Mainline Retaining Walls Along 159th Street plans for Pipe Underdrain Layout and Quantities.
- See Sheet 9 of 37 for (Railing) Splice Detail, kick plate details and anchorage details.
- Excavation for placing Porous Granular Embankment is Included in cost of Braced Excavation & Structure Excavation
- Porous Granular Embankment shall be compacted to 95% Modified Proctor Density and its coarse aggregate gradation shall be CA 18.

**PIPE UNDERDRAIN DETAIL**

\* Included in cost of Pipe Underdrain For Structures 6"

DESIGNED	DRS
CHECKED	JJG
DRAWN	PMW
CHECKED	JJG

REVISIONS	
NAME	DATE

ILLINOIS DEPARTMENT OF TRANSPORTATION  
US RTE 6 FROM I-294 TO IL RTE 1  
**ABUTMENT BACKFILL & WINGWALL RAILINGS**  
METRA & CN BRIDGE 20.6  
OVER U.S. RTE. 6 (159TH STREET)  
STATION 91+24.94 STRUCTURE NO. 016-2755  
SCALE: DATE: 2/21/2008

**URS**  
100 South Wacker Drive,  
Suite 500  
Chicago, IL 60606  
(312) 939-1000

5/16/2008 5:10:35 PM at:\17049\069\structures\2755\_w\_rr\final design drawings\31-drainage & backfill details.dwg