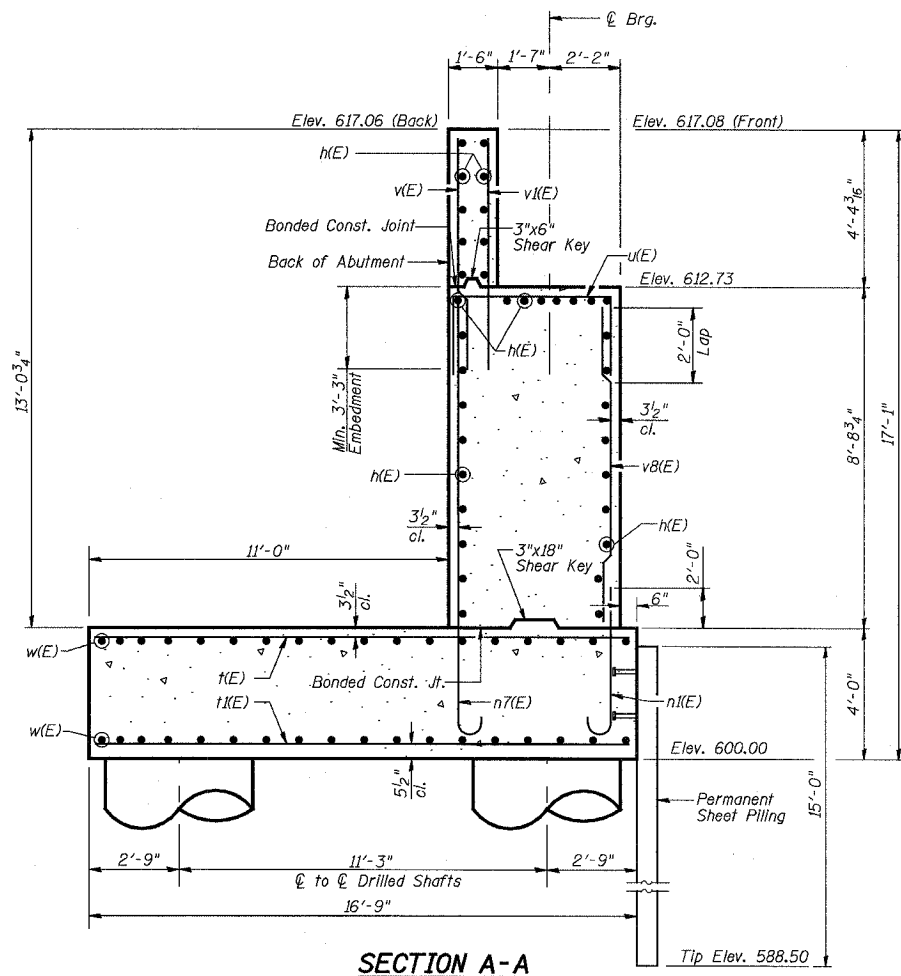


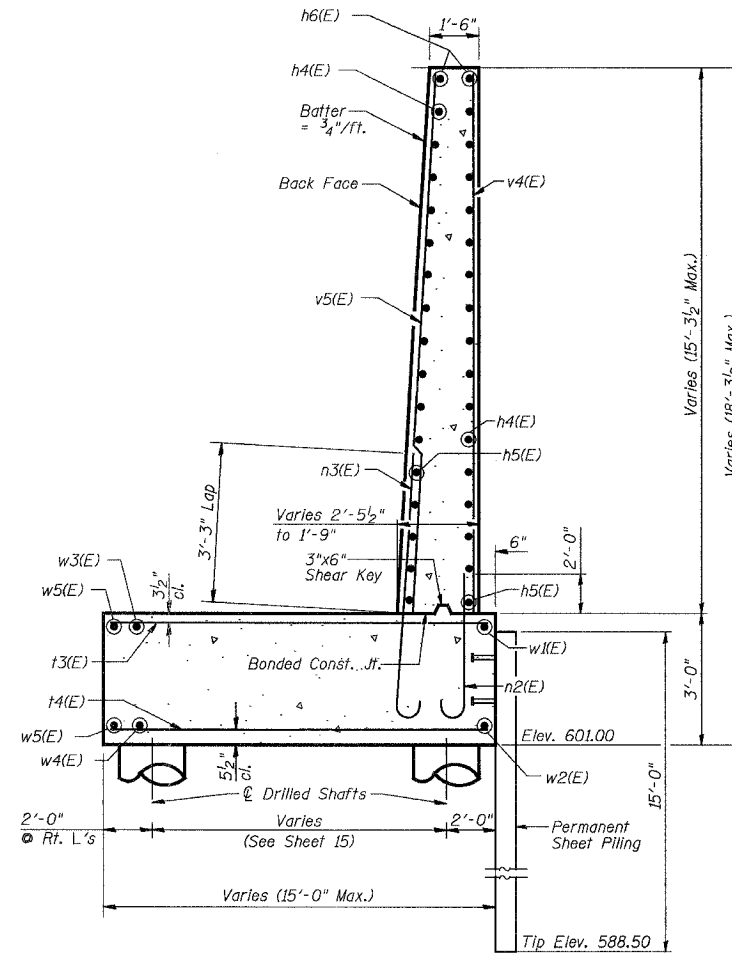
STATE OF ILLINOIS  
DEPARTMENT OF TRANSPORTATION

ROUTE NO.	SECTION	COUNTY	TOTAL SHEETS	SHEET NO.
F.A.P. 351	2008-001VB	COOK	579	398
FED. ROAD DIST. NO. 7		ILLINOIS	FED. AID PROJECT-	
CONTRACT NO. 60E10				

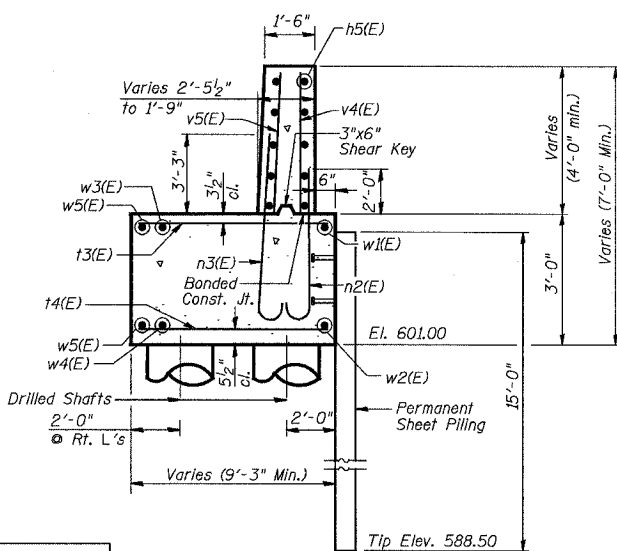
SHEET NO. 13  
25 SHEETS



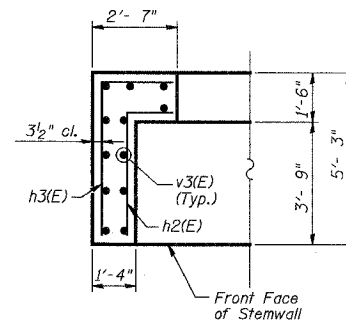
SECTION A-A



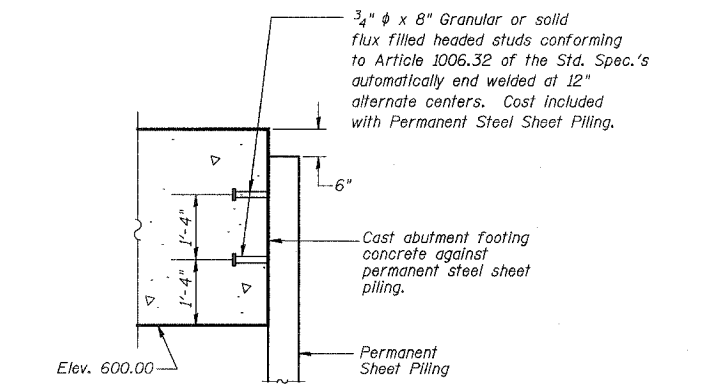
SECTION B-B



SECTION C-C

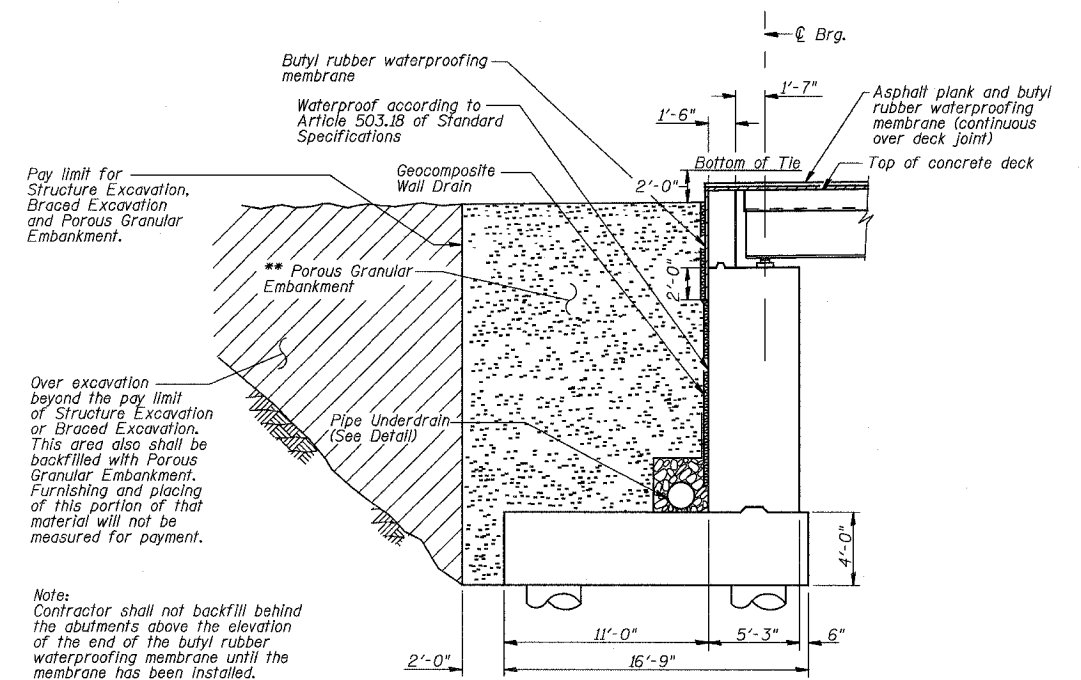


SECTION D-D



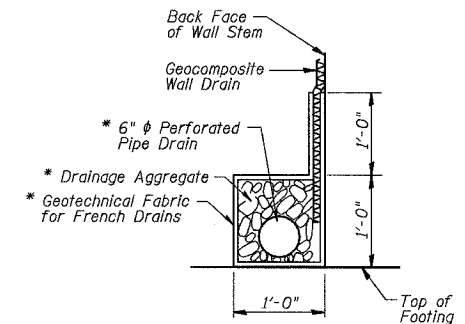
PERMANENT SHEET PILING ATTACHMENT TO FOOTING

Required Minimum Effective Section Modulus of Permanent Sheet Piling is 6.10 in.<sup>3</sup>/ft.



DRAINAGE & BACKFILL DETAIL

\*\* Excavation for placing Porous Granular Embankment is included in cost of Braced Excavation & Structure Excavation  
Porous Granular Embankment shall be compacted to 95% Modified Proctor Density and its coarse aggregate gradation shall be CA 18.



PIPE UNDERDRAIN DETAIL

\* Included in cost of Pipe Underdrain For Structures 6"

NOTES:

1. Reinforcement bars designated (E) shall be epoxy coated.
2. Work this sheet with Sheets 12 through 16.
3. Space reinforcement in seat to miss anchor bolts.
4. See Sheet 16 for Bill of Materials.
5. See Sheet 24 of U.S. 6 Mainline Retaining Walls Along 159th Street plans for Pipe Underdrain Layout and Quantities.

REVISIONS	
NAME	DATE

ILLINOIS DEPARTMENT OF TRANSPORTATION  
US RTE 6 FROM I-294 TO IL RTE 1  
**NORTH ABUTMENT-DETAILS I**

CN GATEWAY LEAD TRACK  
BRIDGE 20.6E OVER U.S. RTE. 6 (159TH STREET)  
STATION 93+69.01 STRUCTURE NO. 016-2819  
SCALE: AS NOTED DATE: 2/21/2008

**URS**  
100 South Wacker Drive,  
Suite 500  
Chicago, IL 60606  
(312) 939-1000

3/13/2008 11:30:12 AM

c:\17049\669\structures\2819\_w\_r\dwg\13\_n\_abut\_det.dwg

DESIGNED AEU  
CHECKED JPB  
DRAWN AEU  
CHECKED JPB