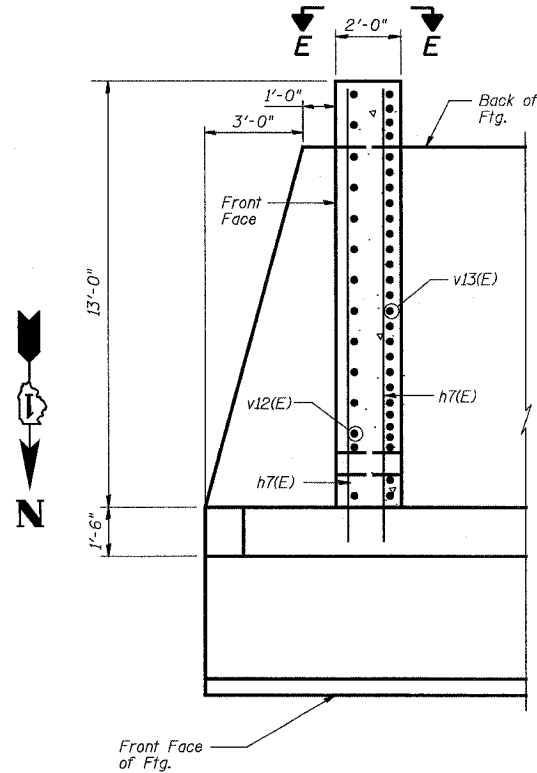


STATE OF ILLINOIS  
DEPARTMENT OF TRANSPORTATION

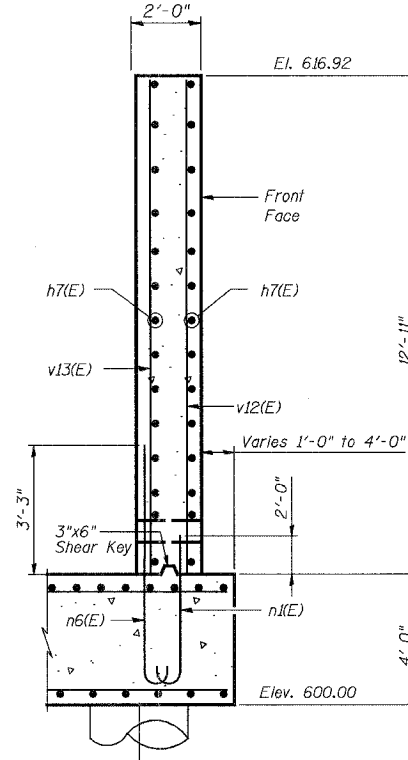
ROUTE NO.	SECTION	COUNTY	TOTAL SHEETS	SHEET NO.
F.A.P. 351	200B-001VB	COOK	579	404
FED. ROAD DIST. NO. 7		ILLINOIS	FED. AID PROJECT	

CONTRACT NO. 60E10

SHEET NO. 19  
25 SHEETS

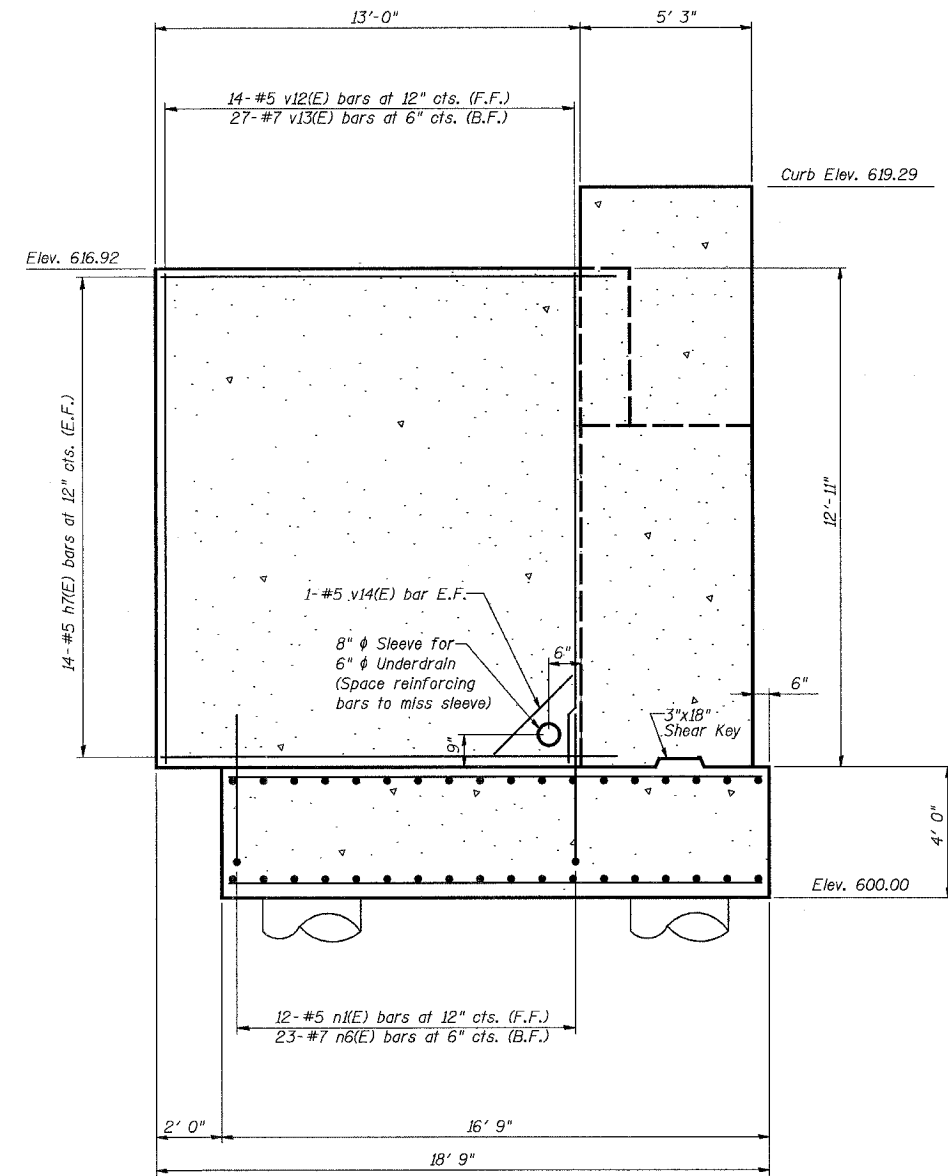


**CLOSURE WALL PLAN**



**SECTION E-E**

(Looking North)



**CLOSURE WALL ELEVATION**

(Looking West)

**LEGEND**

F.F. - Front Face  
B.F. - Back Face  
E.F. - Each Face

**NOTES:**

1. Reinforcement bars designated (E) shall be epoxy coated.
2. Work this sheet with Sheets 17 through 21.
3. See Sheet 21 For Bill of Materials.
4. Cost of pipe sleeve is included with Concrete Structures.

3/13/2008 11:30:16 AM

\\17049\069\structures\2819\_w\_r\_r\dwg\19\_s\_abut\_det.txd

DESIGNED	AEU
CHECKED	JPB
DRAWN	AEU
CHECKED	JPB

**URS**  
100 South Wacker Drive,  
Suite 500  
Chicago, IL 60606  
(312) 939-1000

REVISIONS	
NAME	DATE

ILLINOIS DEPARTMENT OF TRANSPORTATION  
US RTE 6 FROM I-294 TO IL RTE 1  
**SOUTH ABUTMENT  
DETAILS II**  
CN GATEWAY LEAD TRACK  
BRIDGE 20.6E OVER U.S. RTE. 6 (159TH STREET)  
STATION 93+69.01 STRUCTURE NO. 016-2819  
SCALE: 3/8"=1'-0" DATE: 2/21/2008