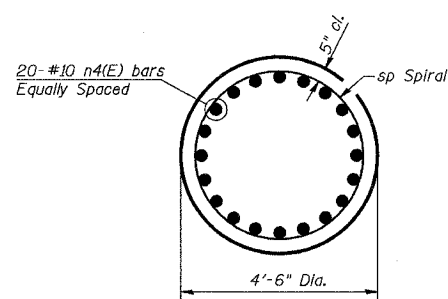


STATE OF ILLINOIS
DEPARTMENT OF TRANSPORTATION

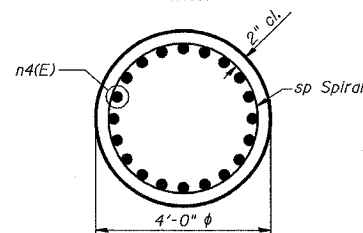
ROUTE NO.	SECTION	COUNTY	TOTAL SHEETS	SHEET NO.
F.A.P. 351	2008- 001VB	COOK	579	405
FED. ROAD DIST. NO. 7		ILLINOIS FED. AID PROJECT-		

SHEET NO. 20
25 SHEETS

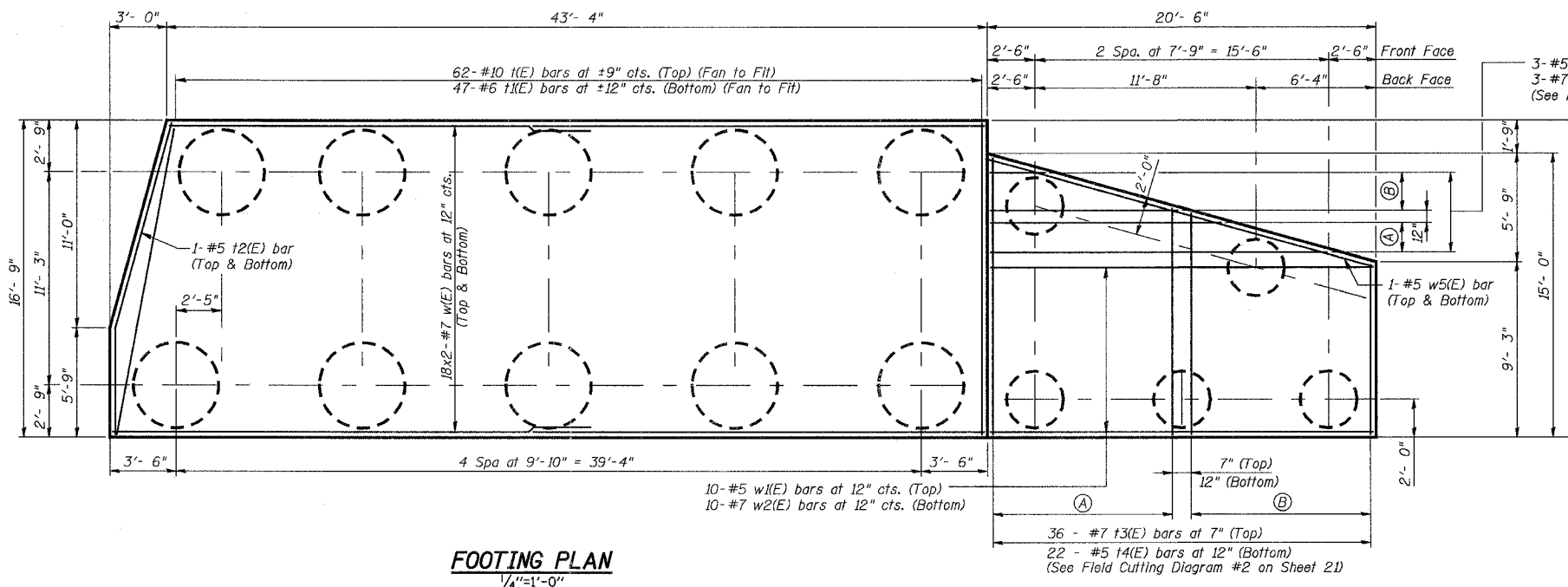
CONTRACT NO. 60E10



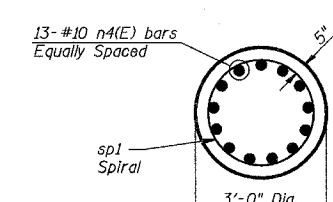
SECTION A-A
(10 Required)
N.T.S.



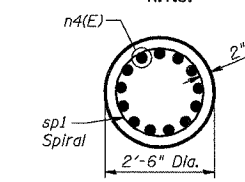
SECTION B-B
(10 Required)
N.T.S.



FOOTING PLAN
1/4"=1'-0"



SECTION C-C
(5 Required)
N.T.S.

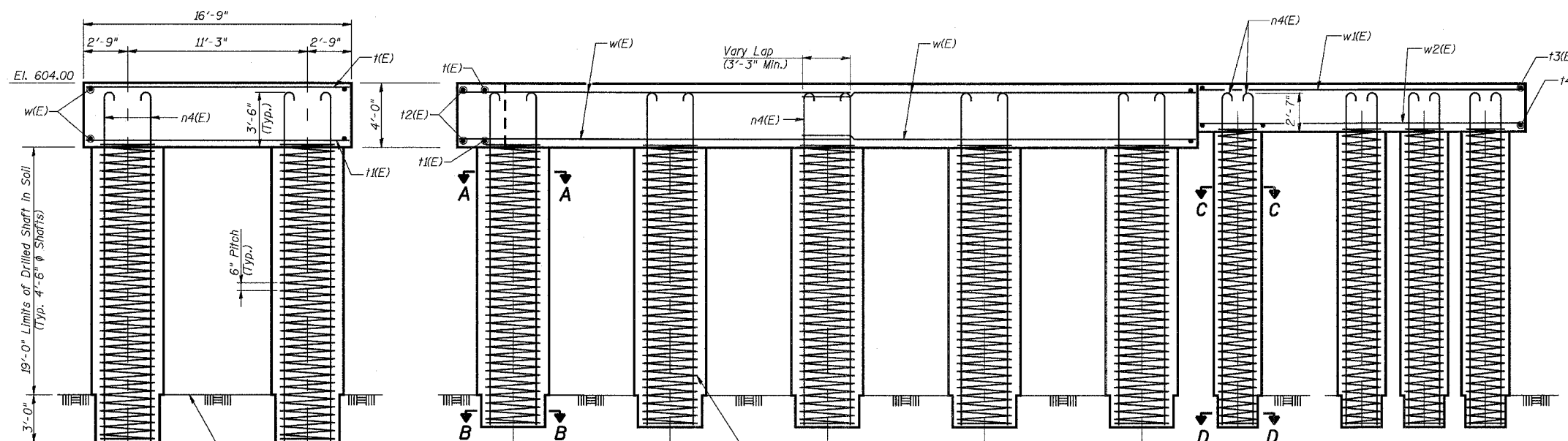


SECTION D-D
(5 Required)
N.T.S.

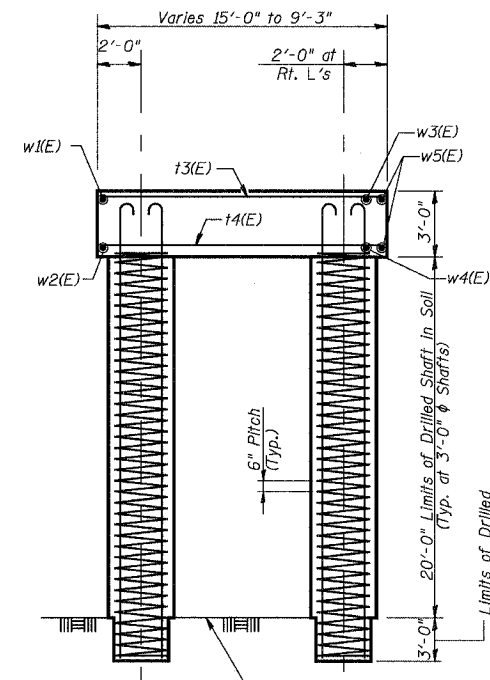


3/13/2008 11:30:16 AM

G:\17049\069\structures\2819_w.r.r\dwg\20_s.abut.fta & shaft.dwg



ELEVATION
1/4"=1'-0"



END VIEW
1/4"=1'-0"

- NOTES:
1. Reinforcement designated (E) shall be epoxy coated.
 2. Work this sheet with Sheets 17 through 21.
 3. For Field Cutting Diagram #1 and #2 see Sheet 21.
 4. Drilled Shafts shall be drilled to Elevation 578.00. Quantities and Detailing are for the estimated Elevations shown on the Plans. The actual conditions encountered in each Shaft may differ and the Drilled Shaft and Reinforcement Quantities shall be adjusted accordingly as directed by the Engineer and paid for at the corresponding Unit Bid Price.
 5. Spiral sp outer diameter = 3'-8".
Spiral sp1 outer diameter = 2'-2".

Min. Lap Splice
for Spiral = 2'-0"

DESIGNED	AEU
CHECKED	JPB
DRAWN	AEU
CHECKED	JPB

URS
100 South Wacker Drive,
Suite 500
Chicago, IL 60606
(312) 939-1000

REVISIONS	
NAME	DATE

ILLINOIS DEPARTMENT OF TRANSPORTATION
US RTE 6 FROM I-294 TO IL RTE 1
**SOUTH ABUTMENT
FOOTING & DRILLED SHAFTS**
CN GATEWAY LEAD TRACK
BRIDGE 20.6E OVER U.S. RTE. 6 (159TH STREET)
STATION 93+69.01 STRUCTURE NO. 016-2819
SCALE: AS NOTED DATE: 2/21/2008