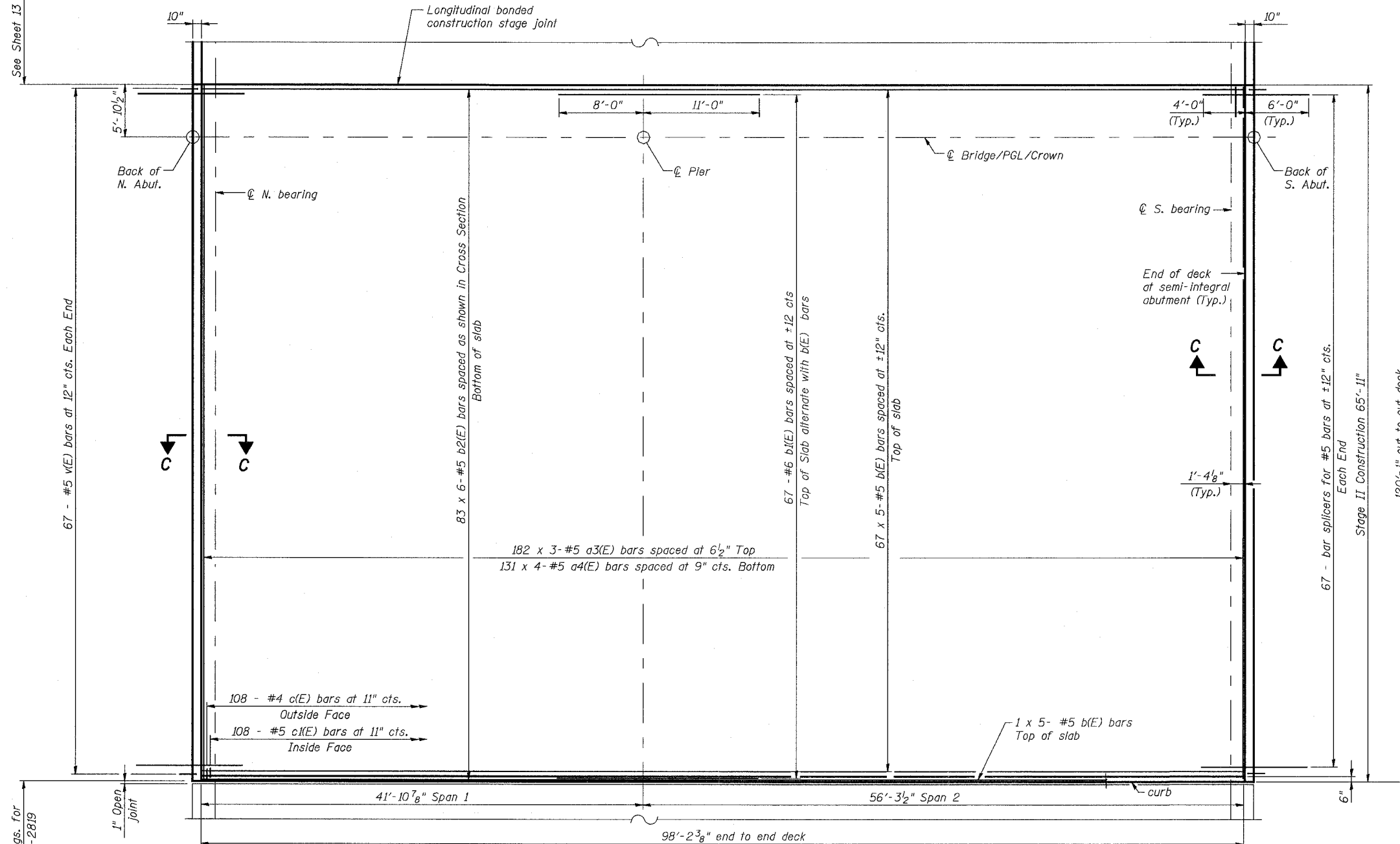


STATE OF ILLINOIS
DEPARTMENT OF TRANSPORTATION

ROUTE NO.	SECTION	COUNTY	TOTAL SHEETS	SHEET NO.
F.A.P. 351	2008-001VB	COOK	579	424
FED. ROAD DIST. NO. 7		ILLINOIS	FED. AID PROJECT-	
CONTRACT NO. 60E10				

SHEET NO. 14
54 SHEETS



PARTIAL PLAN
(SN 016-2820)
SCALE: 3/16"=1'-0"

Notes:

1. Work this Sheet with Sheets 13, 15, 16 and 21
2. See Sheet 21 for Section C-C and diaphragm details.
3. Min. lap length for #4 bar is 1'-4", #5 bar is 1'-8" and #6 bar is 2'-0".
4. See Sheet 16 for bridge cross section, superstructure details and bill of materials.
5. Reinforcement bars designated (E) shall be epoxy coated.
6. Bars indicated thus 20 x 3-#15 etc. indicates 20 lines of bars with 3 lengths per line.
7. See Sheet 17 for curb reinforcement.
8. See Sheet 48 for bar splicer details.

3/13/2008 2:52:35 PM

G:\17049_0165\structures\2820_w_hwy\dwg\prefinal_plans\14-2820_w_deck\indan

DESIGNED	EV
CHECKED	NPP
DRAWN	EV
CHECKED	NPP

URS
100 South Wacker Drive,
Suite 500
Chicago, IL 60606
(312) 939-1000

REVISIONS	
NAME	DATE

ILLINOIS DEPARTMENT OF TRANSPORTATION
US RTE 6 FROM I-294 TO IL RTE 1
SUPERSTRUCTURE 2
SN 016-2820
STRUCTURES FOR CN INTERMODAL
YARD VEHICLES OVER U.S. RTE. 6 (159TH STREET)
STATION 95+02.14 STRUCTURE NOS. 016-2820
& 016-2821
SCALE: 3/16"=1'-0" DATE: 2/21/2008

EV