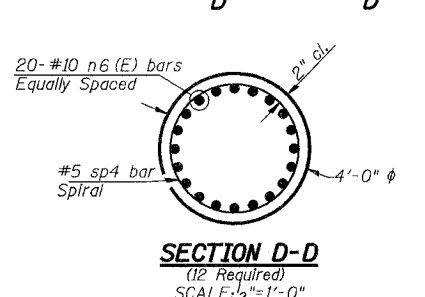
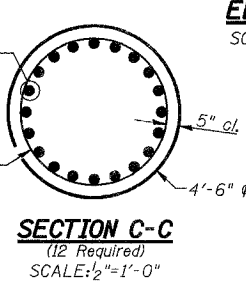
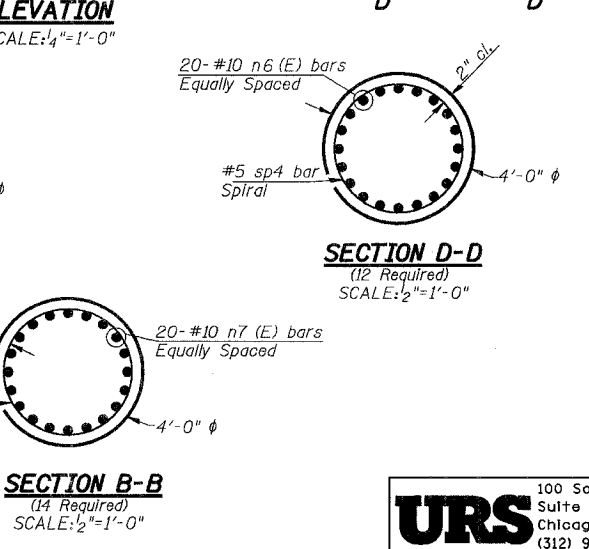
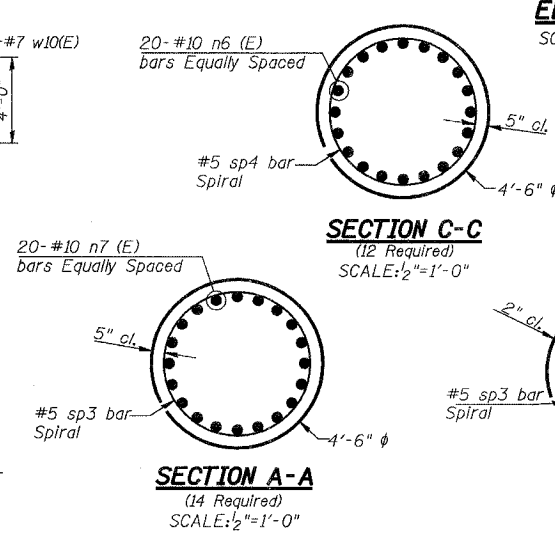
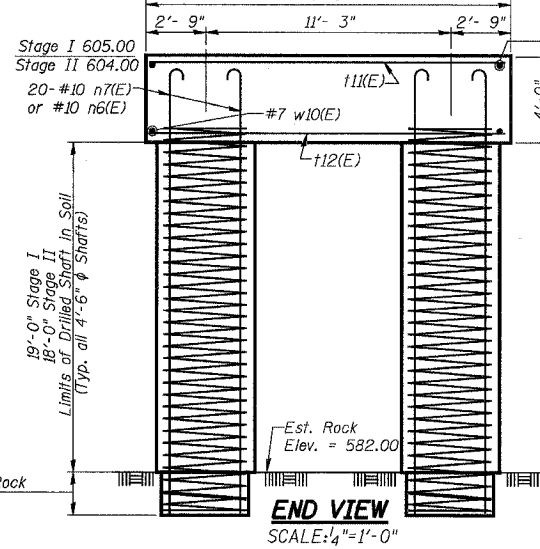
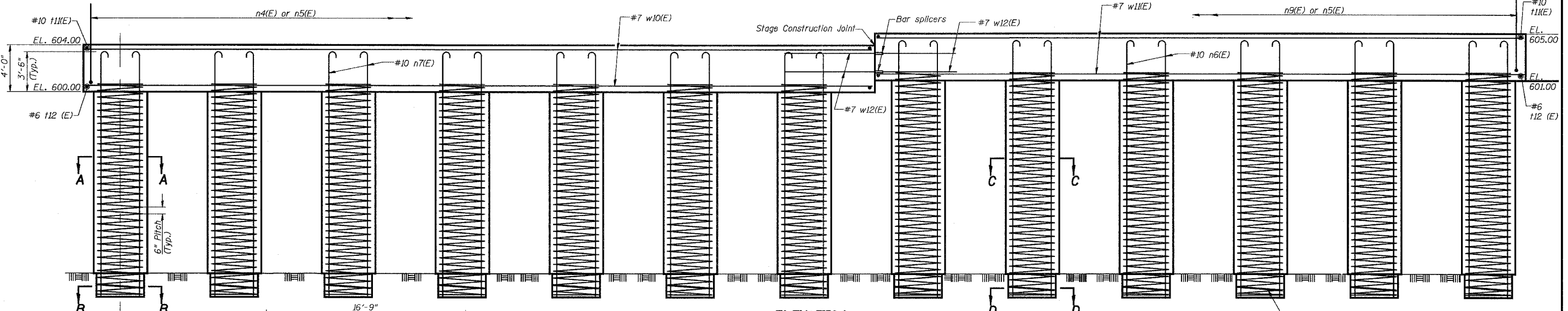
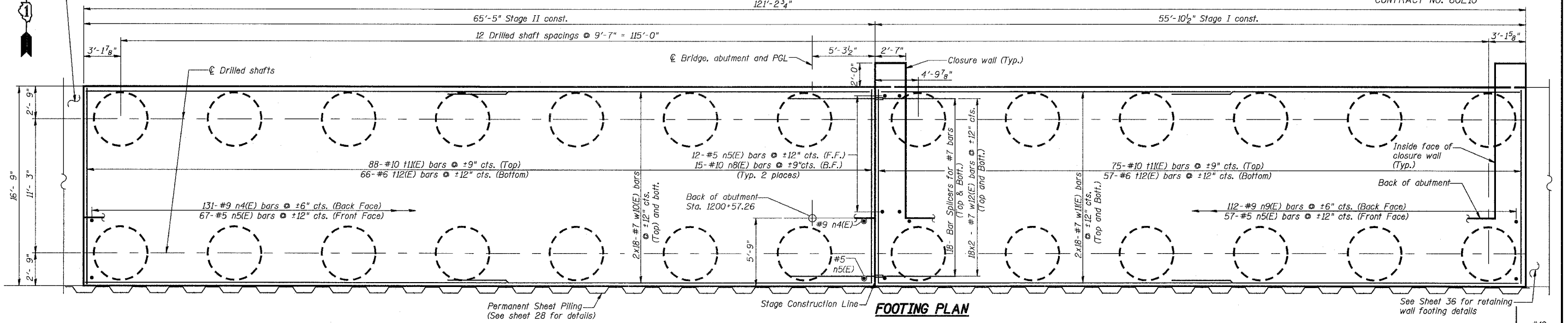


STATE OF ILLINOIS
DEPARTMENT OF TRANSPORTATION

ROUTE NO.	SECTION	COUNTY	TOTAL SHEETS	SHEET NO.
F.A.P. 351	2008-001VB	COOK	579	434
FED. ROAD DIST. NO. 7		ILLINOIS	FED. AID PROJECT-	
CONTRACT NO. 60E10				

SHEET NO. 24
54 SHEETS



Notes:

- See sheet 25 for Bill of Materials.
- Drilled Shafts shall be drilled to Elevation 582.00. Quantities and Detailing are for the estimated Elevations shown on the Plans. The actual conditions encountered in each Shaft may differ and the Drilled Shaft and Reinforcement Quantities shall be adjusted accordingly as directed by the Engineer and paid for at the corresponding Unit Bid Price.

Min. Lap Splice for Spiral = 2'-0"

#5 sp3 or sp4 Spiral (Typ.)
Each Shaft- Provide 1 1/2 extra turns top and bottom. Extend Spiral 2" into Footing. Provide min. 4-#4 bar spacers or equivalent.

REVISIONS	
NAME	DATE

ILLINOIS DEPARTMENT OF TRANSPORTATION
US RTE 6 FROM I-294 TO IL RTE 1
NORTH ABUT. FOUNDATION
SN 016-2820
STRUCTURES FOR CN INTERMODAL
YARD VEHICLES OVER U.S. RTE. 6 (159TH STREET)
STATION 95+02.14 STRUCTURE NOS. 016-2820 & 016-2821
SCALE: AS NOTED DATE: 2/21/2008

URS
100 South Wacker Drive,
Suite 500
Chicago, IL 60606
(312) 939-1000

3/13/2008 2:52:40 PM
c:\17049\069\structures\2820_w.hwi\dwg\pref\plns\24-nabuttoun1-2.dwg

DESIGNED	EV
CHECKED	NPP
DRAWN	EV
CHECKED	NPP