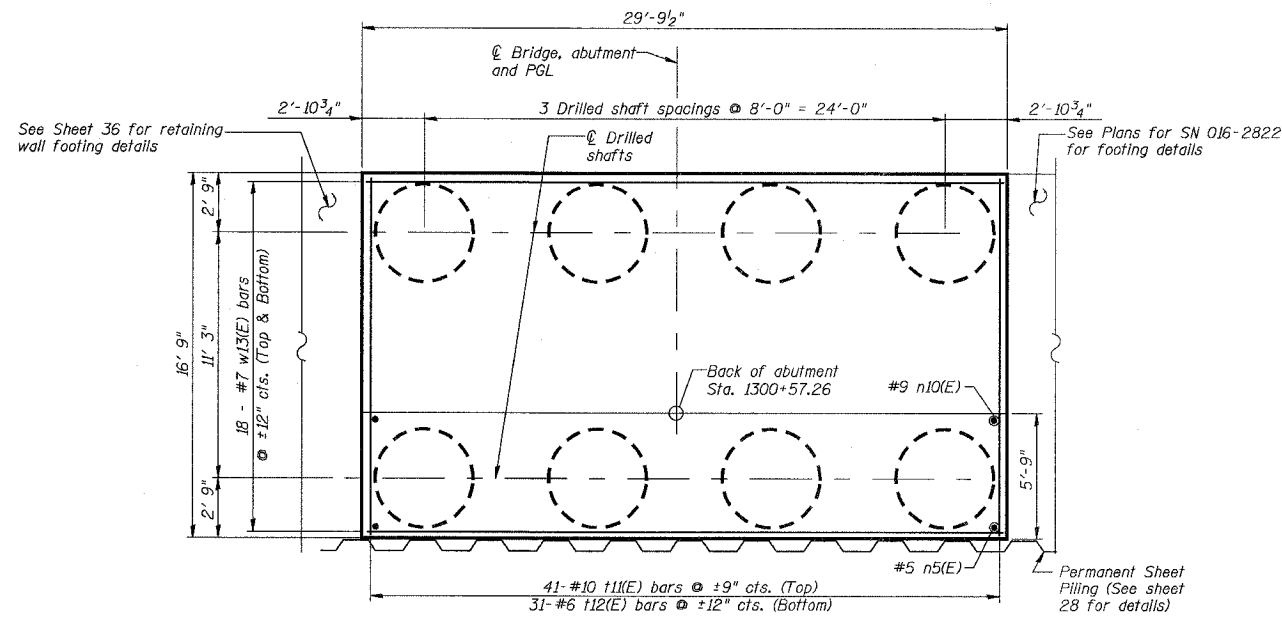


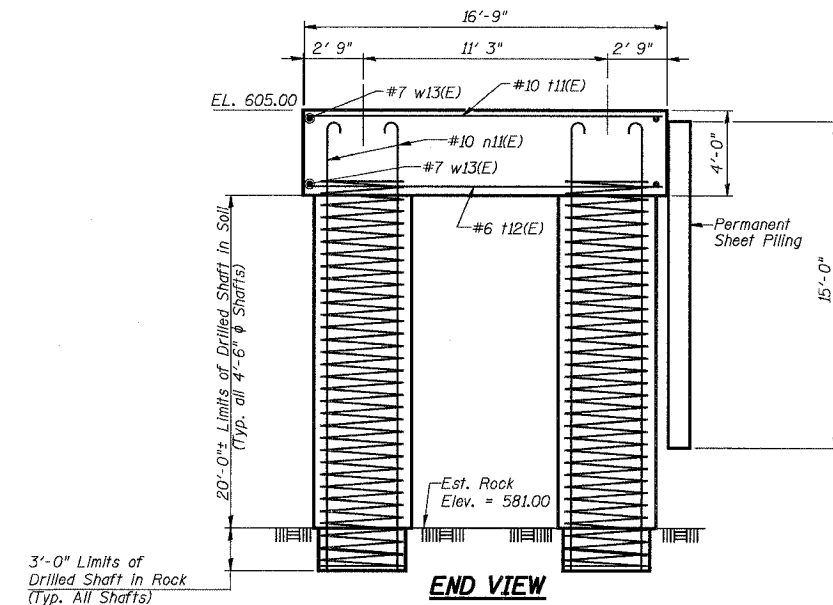
STATE OF ILLINOIS  
DEPARTMENT OF TRANSPORTATION

ROUTE NO.	SECTION	COUNTY	TOTAL SHEETS	SHEET NO.
F.A.P. 351	2008-001VB	COOK	579	437
FED. ROAD DIST. NO. 7	ILLINOIS	FED. AID PROJECT-	CONTRACT NO. 60E10	

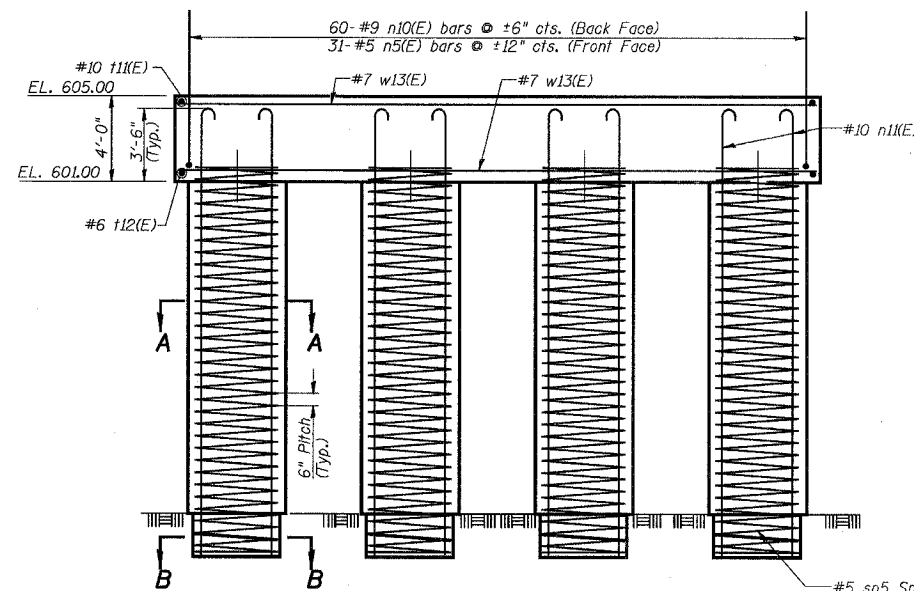
SHEET NO. 27  
54 SHEETS



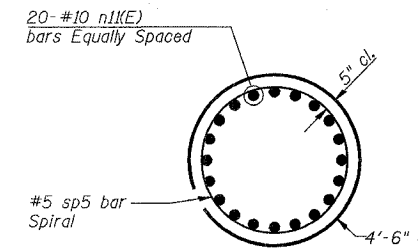
**FOOTING PLAN**  
SCALE: 1/4" = 1'-0"



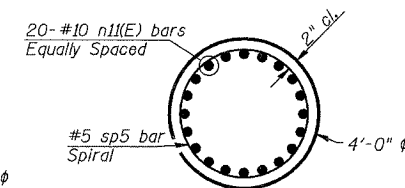
**END VIEW**  
SCALE: 1/4" = 1'-0"



**ELEVATION**  
SCALE: 1/4" = 1'-0"



**SECTION A-A**  
(8 Required)  
SCALE: N.T.S.



**SECTION B-B**  
(8 Required)  
SCALE: N.T.S.

Notes:

- See sheet 26 for Bill of Materials
- Drilled Shafts shall be drilled to Elevation 581.00. Quantities and Detailing are for the estimated Elevations shown on the Plans. The actual conditions encountered in each Shaft may differ and the Drilled Shaft and Reinforcement Quantities shall be adjusted accordingly as directed by the Engineer and paid for at the corresponding Unit Bid Price.

Min. Lap Splice for Spiral = 2'-0"

#5 sp5 Spiral (Typ.)  
Each Shaft- Provide 1/2 extra turns top and bottom. Extend Spiral 2" into Footing. Provide min. 4-#4 bar spacers or equivalent.

3/13/2008 2:52:42 PM

ca:\17049\_069\structures\2820\_w\_hwf\dwg\pref\final\_plans\27-abut\font-1-22821.dwg

DESIGNED	EV
CHECKED	NPP
DRAWN	EV
CHECKED	NPP

**URS**  
100 South Wacker Drive,  
Suite 500  
Chicago, IL 60606  
(312) 939-1000

REVISIONS	
NAME	DATE

ILLINOIS DEPARTMENT OF TRANSPORTATION  
US RTE 6 FROM I-294 TO IL RTE 1  
**NORTH ABUT. FOUNDATION**  
**SN 016-2821**  
STRUCTURES FOR CN INTERMODAL  
YARD VEHICLES OVER U.S. RTE. 6 (159TH STREET)  
STATION 95+02.14 STRUCTURE NOS. 016-2820  
& 016-2821  
SCALE: AS NOTED DATE: 2/21/2008