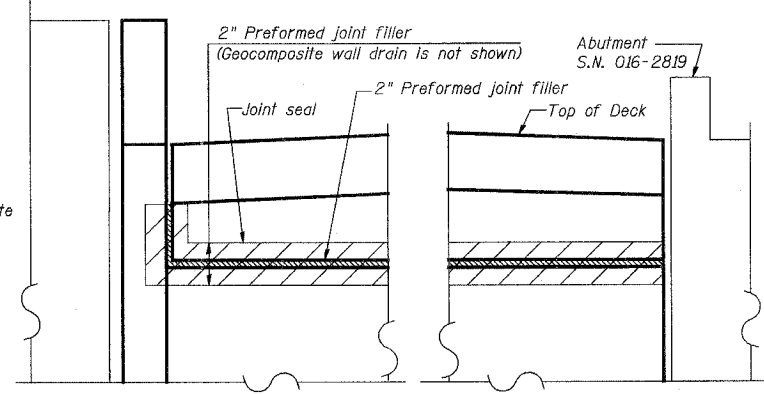


| ROUTE NO. | SECTION | COUNTY | TOTAL SHEETS | SHEET NO. |
|---|------------|--------|--------------|-----------|
| F.A.P. 351 | 2008-001VB | COOK | 579 | 438 |
| FED. ROAD DIST. NO. 7 ILLINOIS FED. AID PROJECT | | | | |

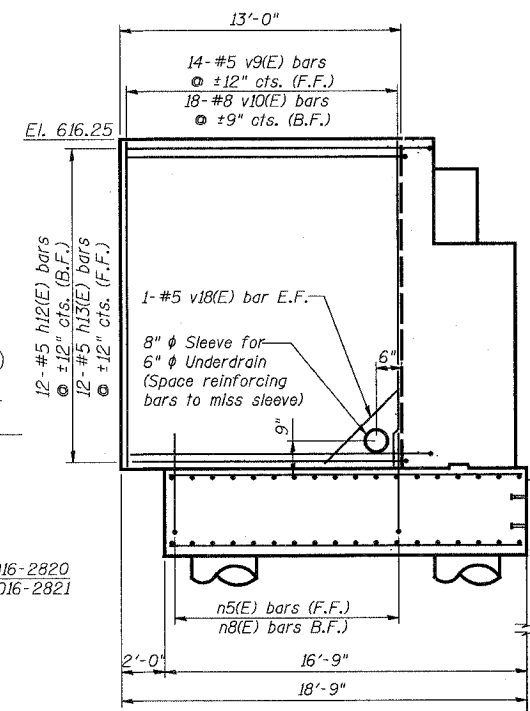
SHEET NO. 28
54 SHEETS

CONTRACT NO. 60E10

STATE OF ILLINOIS
DEPARTMENT OF TRANSPORTATION



SECTION C-C
SCALE: N.T.S.

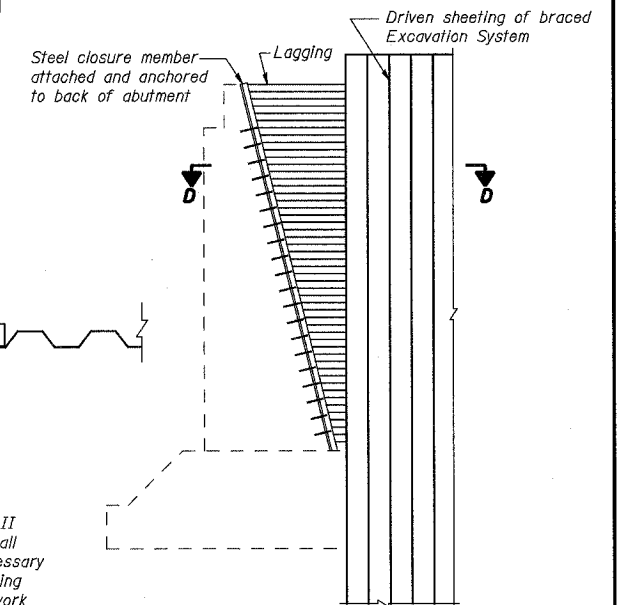


CLOSURE WALL ELEVATION
(2 Req'd for SN 016-2820)

Shown for location near center line of bridge
SCALE: N.T.S.

SECTION THROUGH TYPICAL CLOSURE WALL

(2 Req'd for SN 016-2820)
Looking north at east closure wall, looking south at location near center line of bridge



TYPICAL CLOSURE DETAIL FOR BRACED EXCAVATION SYSTEM AT BACK OF ABUTMENTS
(See Note *)

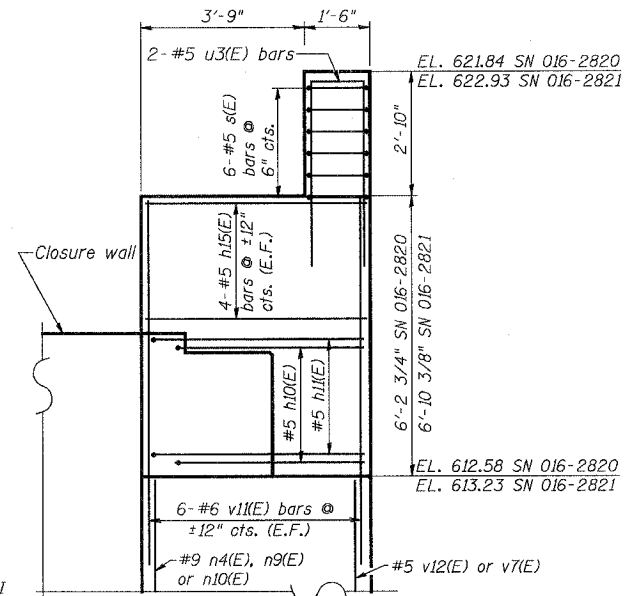
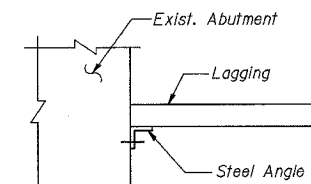
Notes:

1. See sheet 24 for locations of closure walls.
2. Bars designated (E) shall be epoxy coated.
3. Cost of PVC pipe sleeve is included with Concrete Structures.
4. Work this sheet with sheets 23 through 27.
5. See sheets 23 and 26 for location of sections A-A and B-B.

SECTION D-D

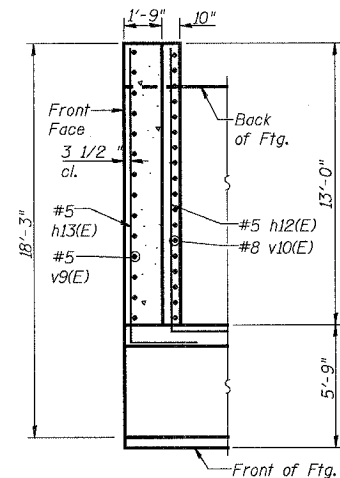
(2 Req'd for SN 016-2820)

* Note:
Temporary sheeting for stage I and stage II braced excavation systems, shall include all materials hardware, labor & equipment necessary for its connection to the back of the existing abutments. All associated costs for this work will be considered included in the unit price for the Pay Item "Braced Excavation".



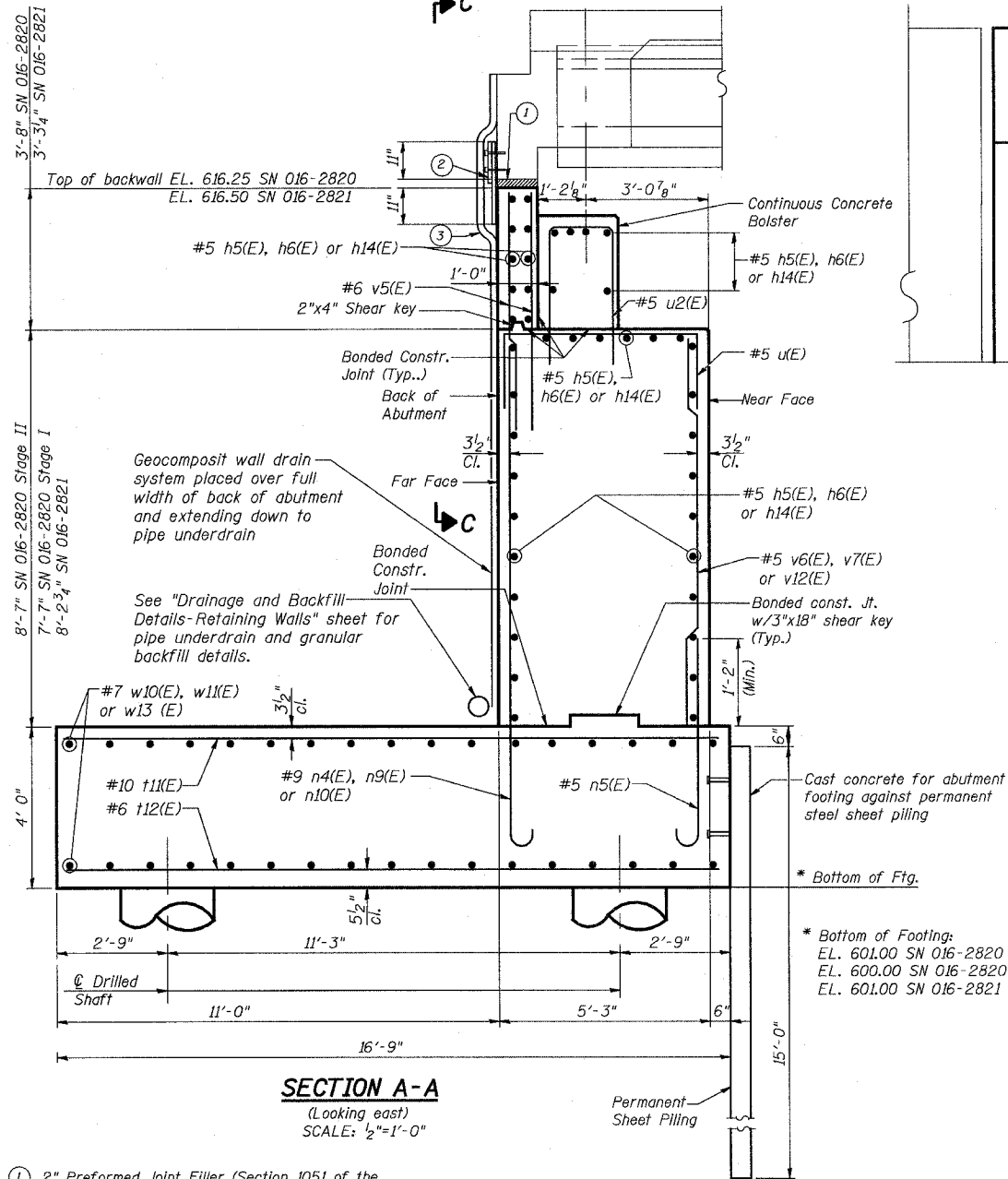
SECTION B-B
SCALE: N.T.S.

(SN 016-2820 as shown, SN 016-2821 opposite hand)



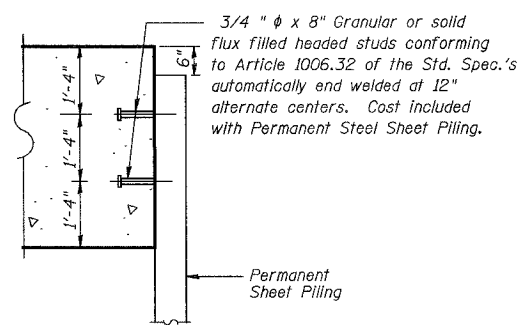
PLAN FOR CLOSURE WALL
SCALE: N.T.S.

(2 Req'd for SN 016-2820)
Shown for location near center line of bridge



SECTION A-A
(Looking east)

SCALE: 1/2"=1'-0"



PERMANENT SHEET PILING ATTACHMENT TO FOOTING
SCALE: N.T.S.

Required Minimum Effective Section Modulus of Permanent Sheet Piling is 6.10 in.³/ft.

1. 2" Preformed Joint Filler (Section 1051 of the Standard Specifications) bonded to abutment backwall with approved adhesive (full length of backwall)
2. Fabric Reinforced Elastomeric Mat (See Special Provisions). Fabric mat shall be 24" wide and attached full length of diaphragm with a 3"x5" steel plate and 1/2" Ø studs with nuts and washers at 12" cts.
3. Geocomposite wall drain (Section 591 of the Standard Specifications) - Provide over full width of the back of abutment and extending down to pipe underdrain
4. Cost of 1, 2, and 3 shall be included with Concrete Superstructure.

| | |
|----------|-----|
| DESIGNED | EV |
| CHECKED | NPP |
| DRAWN | EV |
| CHECKED | NPP |

| REVISIONS | |
|-----------|------|
| NAME | DATE |
| | |
| | |
| | |

ILLINOIS DEPARTMENT OF TRANSPORTATION
US RTE 6 FROM I-294 TO IL RTE 1
NORTH ABUTMENT DETAILS

STRUCTURES FOR CN INTERMODAL
YARD VEHICLES OVER U.S. RTE. 6 (159TH STREET)
STRUCTURE NOS. 016-2820 & 016-2821
SCALE: AS NOTED DATE: 9/21/2008

URS 100 South Wacker Drive,
Suite 500
Chicago, IL 60606
(312) 939-1000

3/13/2008 2:52:42 PM c:\17049\069\structures\2820.w\hwl\skp\ref\final\plans\28-abut_section.dgn