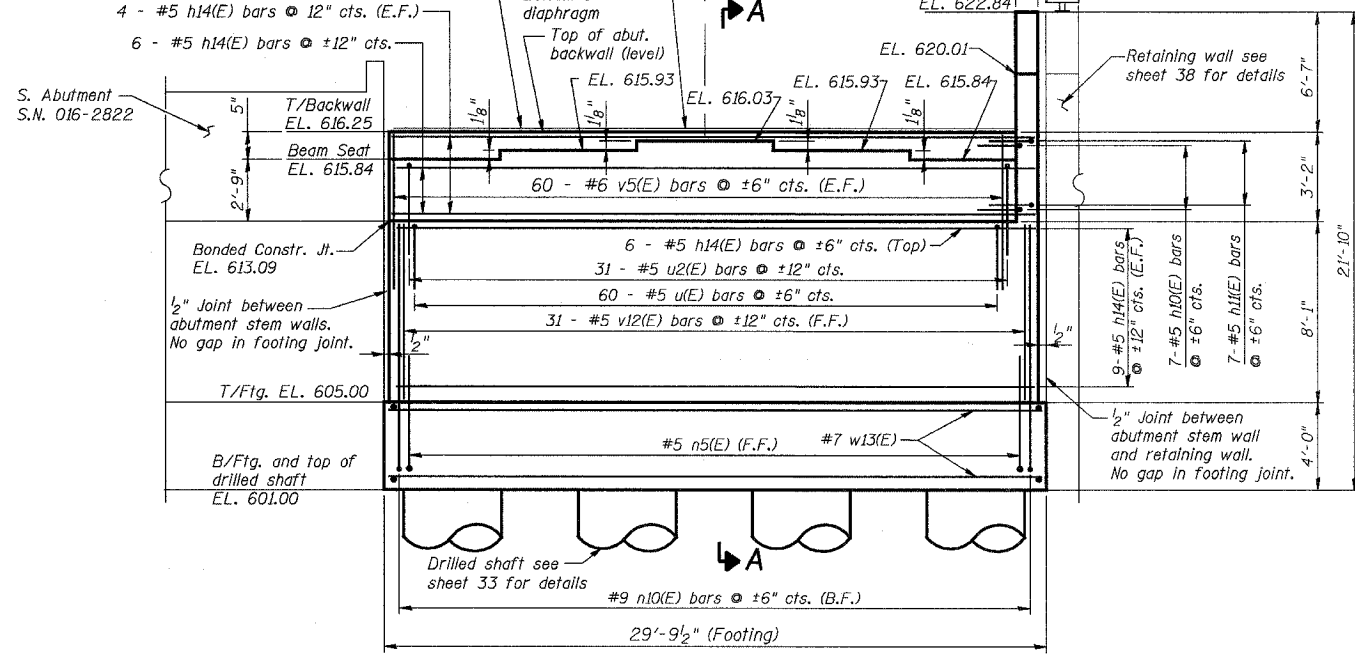


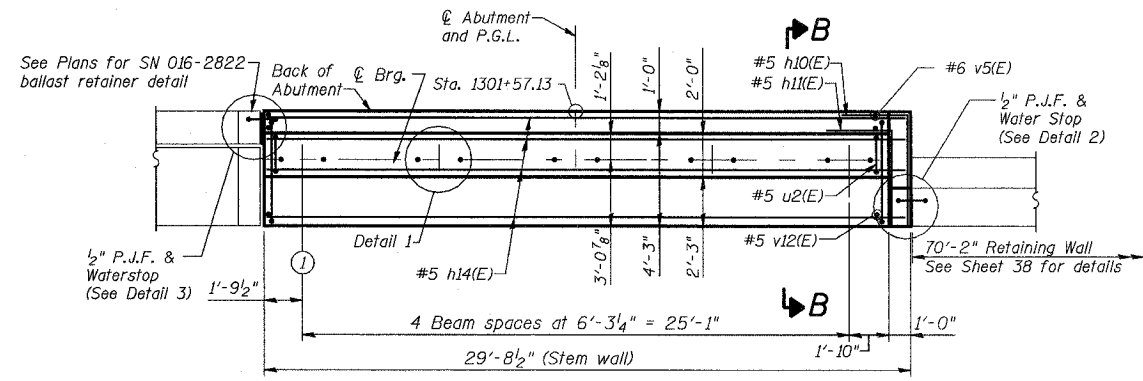
STATE OF ILLINOIS
DEPARTMENT OF TRANSPORTATION

ROUTE NO.	SECTION	COUNTY	TOTAL SHEETS	SHEET NO.
F.A.P. 351	2008-001VB	COOK	579	442
FED. ROAD DIST. NO. 7		ILLINOIS FED. AID PROJECT		CONTRACT NO. 60E10

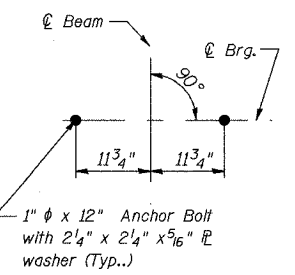
SHEET NO. 32
54 SHEETS



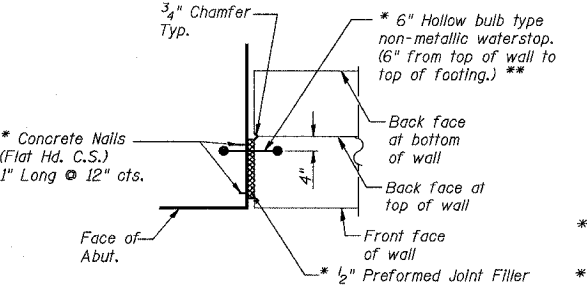
ELEVATION
(LOOKING SOUTH)
SCALE: 1/4"=1'-0"



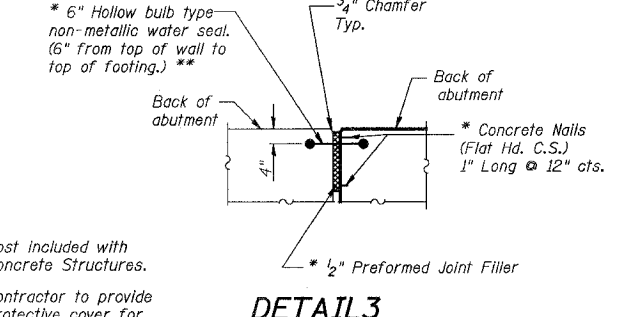
PLAN
SCALE: 1/4"=1'-0"



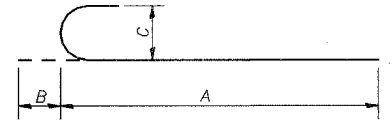
DETAIL 1
SCALE: N.T.S.



DETAIL 2
SCALE: N.T.S.

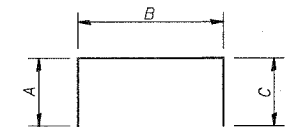


DETAIL 3
SCALE: N.T.S.



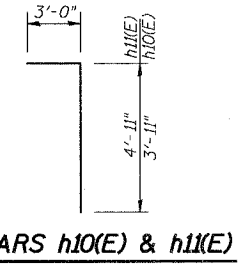
BARS n5(E), n7(E) & n10(E)

Bar	A	B	C
n5(E)	4'-6"	7"	5"
n7(E)	34'-6"	1'-5"	1'-1 1/4"
n10(E)	11'-3"	1'-3"	11 3/4"

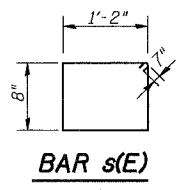


BARS u(E) through u3(E)

Bar	A	B	C
u(E)	2'-0"	4'-8"	2'-0"
u2(E)	5'-9"	1'-8"	5'-9"
u3(E)	4'-6"	1'-2"	4'-6"



BARS h10(E) & h11(E)



BAR s(E)

BILL OF MATERIAL - SOUTH ABUTMENT

Bar	No.	Size	Length	Shape
h10(E)	7	#5	6'-11"	U
h11(E)	7	#5	7'-11"	U
h14(E)	38	#5	29'-4"	U
h15(E)	8	#5	4'-11"	U
n5(E)	31	#5	5'-1"	U
n14(E)	160	#10	35'-11"	U
n10(E)	60	#9	12'-6"	U
t11(E)	41	#10	16'-5"	U
t12(E)	31	#6	16'-5"	U
s(E)	6	#5	4'-10"	U
u(E)	60	#5	8'-8"	U
u2(E)	31	#5	13'-2"	U
u3(E)	2	#5	10'-2"	U
v5(E)	120	#6	6'-3"	U
v11(E)	12	#6	9'-0"	U
v12(E)	31	#5	8'-0"	U
w13(E)	36	#7	29'-5"	U
sp8	8	#5	31'-2"	W
Porous Granular Embankment			Cu. Yd.	206
Concrete Structures			Cu. Yd.	131.5
Reinforcement Bars			Pound	5,040
Reinforcement Bars, Epoxy Coated			Pound	37,150
Geocomposite Wall Drain			Sq. Yd.	41
Braced Excavation			Cu. Yd.	419
Drilled Shaft in Soil			Cu. Yd.	132
Drilled Shaft in Rock			Cu. Yd.	12

NOTES:

1. Reinforcement bars designated (E) shall be epoxy coated.
2. Work this sheet with Sheets 33 & 34.
3. Cast steps monolithically with cap.
4. Space reinforcement to miss anchor bolts.
5. See Sheet 34 for Section A-A, Section B-B.
6. See Sheet 1 for limits of Braced Excavation.
7. See Sheet 24 of U.S. 6 Mainline Retaining Walls Along 159th Street plans for Pipe Underdrain Layout and Quantities.
8. See Sheet 45 for details of Porous Granular Embankment and Pipe Underdrain for Structures 6".

REVISIONS	
NAME	DATE

ILLINOIS DEPARTMENT OF TRANSPORTATION
US RTE 6 FROM I-294 TO IL RTE 1
SOUTH ABUT. SN 016-2821

STRUCTURES FOR CN INTERMODAL
YARD VEHICLES OVER U.S. RTE. 6 (159TH STREET)
STATION 95+02.14 STRUCTURE NOS. 016-2820
SCALE: AS NOTED DATE: 2/21/2008 & 016-2821

URS
100 South Wacker Drive,
Suite 500
Chicago, IL 60606
(312) 939-1000

3/13/2008 2:52:44 PM at:\17049\065\structures\2821_w_hwu\dwg\ref\m\plans\32-s-abut_2821.dwg

DESIGNED	EV
CHECKED	NPP
DRAWN	EV
CHECKED	NPP