

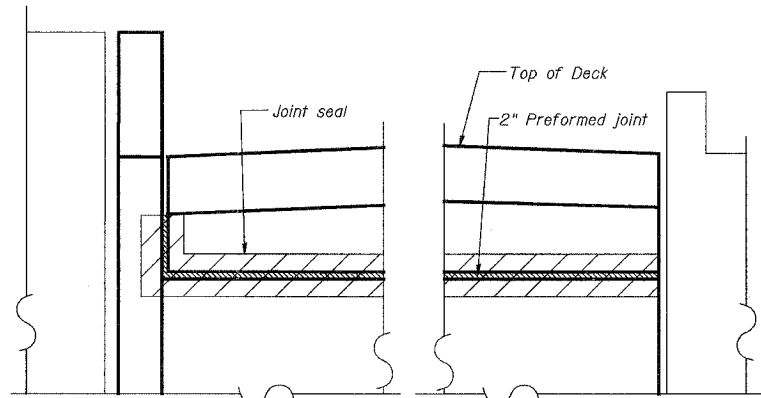
STATE OF ILLINOIS
DEPARTMENT OF TRANSPORTATION

ROUTE NO.	SECTION	COUNTY	TOTAL SHEETS	SHEET NO.
F.A.P. 351	2008-001VB	COOK	579	444
FED. ROAD DIST. NO. 7		ILLINOIS	FED. AID PROJECT-	

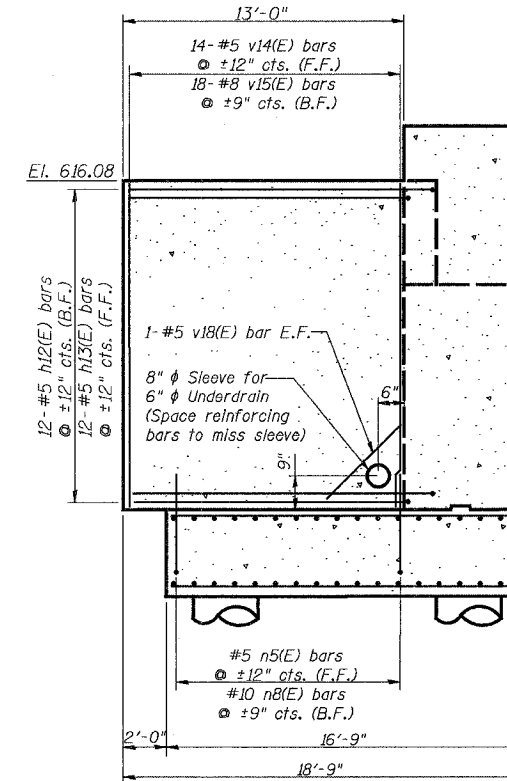
SHEET NO. 34
54 SHEETS

CONTRACT NO. 60E10

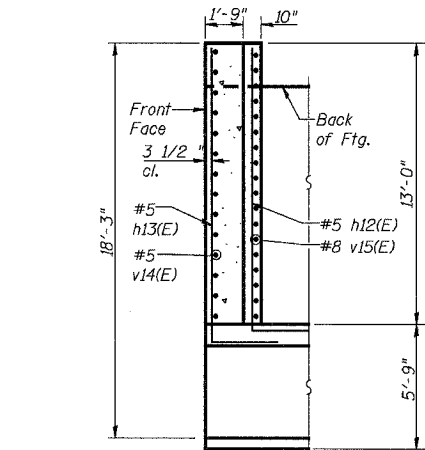
- 2" Preformed Joint Filler (Section 1051 of the Standard Specifications) bonded to abutment backwall with approved adhesive (full length of backwall)
- Fabric Reinforced Elastomeric Mat (See Special Provisions). Fabric mat shall be 24" wide and attached full length of diaphragm with a 3/8"x5" steel plate and 1/2" φ studs with nuts and washers at 12" cts.
- Geocomposite wall drain (Section 591 of the Standard Specifications) - Provide over full width of the back of abutment and extending down to pipe underdrain
- Cost of ①, ②, and ③ shall be included with Concrete Superstructure.



SECTION C-C

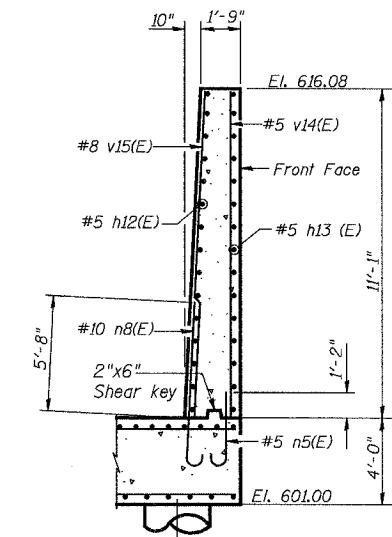


TYPICAL CLOSURE WALL ELEVATION



TYPICAL PLAN FOR CLOSURE WALL

(2 Req'd for SN 016-2820)
SCALE: 1/4"=1'-0"

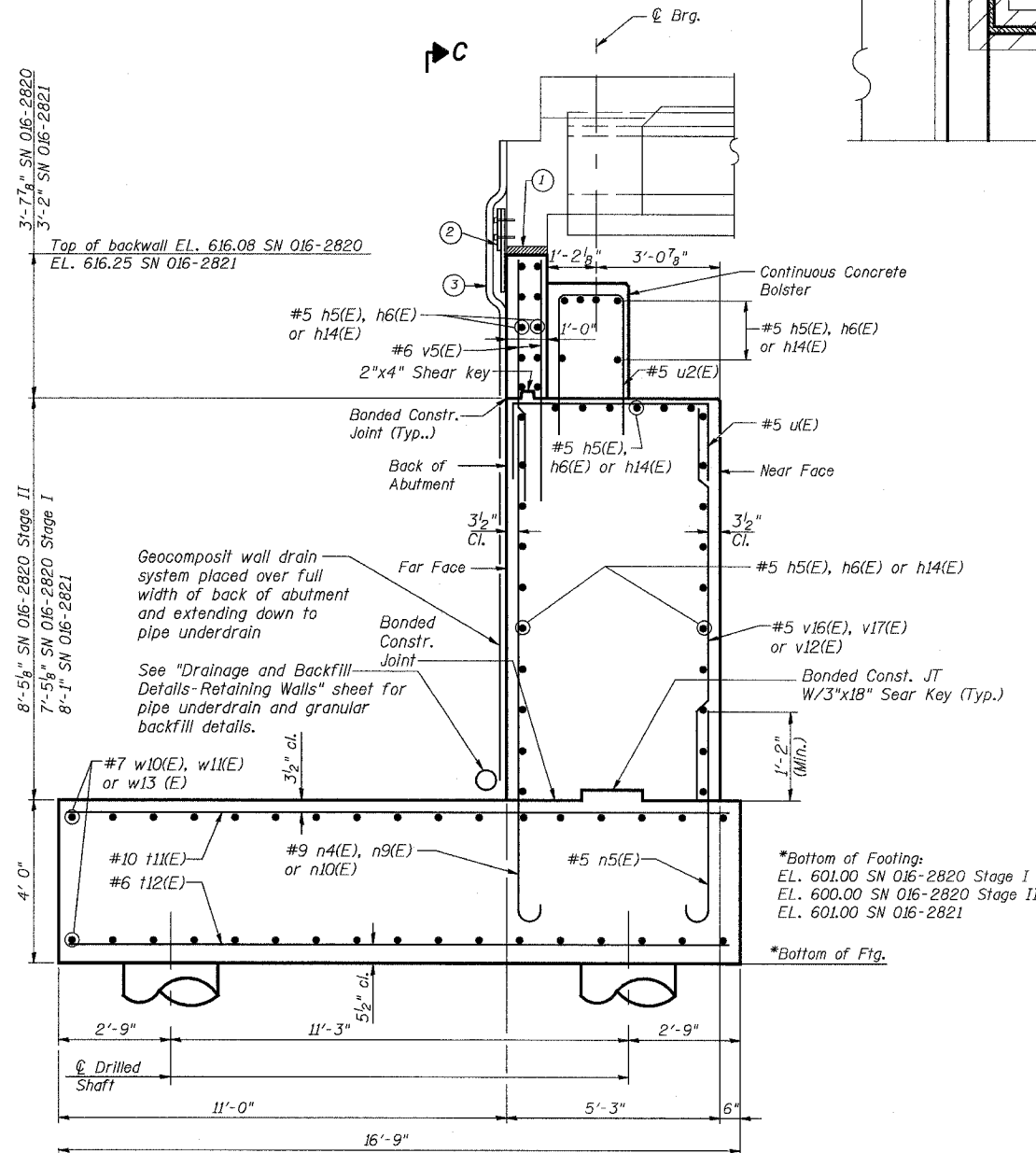


SECTION THROUGH TYPICAL CLOSURE WALL

(2 Req'd for SN 016-2820)
SCALE: 1/4"=1'-0"

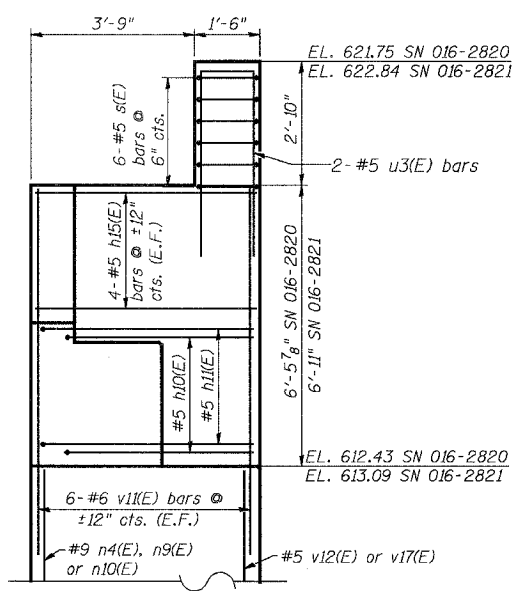
Notes:

- See sheet 29 for locations of closure walls.
- Bars designated (E) shall be epoxy coated.
- Cost of PVC pipe sleeve is included with Concrete Structures.
- See sheet 28 for Typical closure detail for braced excavation system at back of abutments.



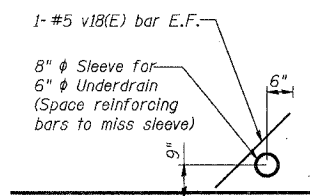
SECTION A-A

(Looking West)
SCALE: 1/2"=1'-0"



SECTION B-B

(SN 016-2820 opposite hand,
SN 016-2821 as shown)
SCALE: 1/2"=1'-0"



3/13/2008 2:52:45 PM c:\17045\structures\2820.w\hwl\dwg\prefinal\plans\34-abut-section.dgn

DESIGNED	EV
CHECKED	NPP
DRAWN	EV
CHECKED	NPP

URS
100 South Wacker Drive,
Suite 500
Chicago, IL 60606
(312) 939-1000

REVISIONS	
NAME	DATE

ILLINOIS DEPARTMENT OF TRANSPORTATION
US RTE 6 FROM I-294 TO IL RTE 1
SOUTH ABUTMENT DETAILS

STRUCTURES FOR CN INTERMODAL
YARD VEHICLES OVER U.S. RTE. 6 (159TH STREET)
STATION 95+02.14 STRUCTURE NOS. 016-2820
& 016-2821
SCALE: AS NOTED DATE: 9/21/2008