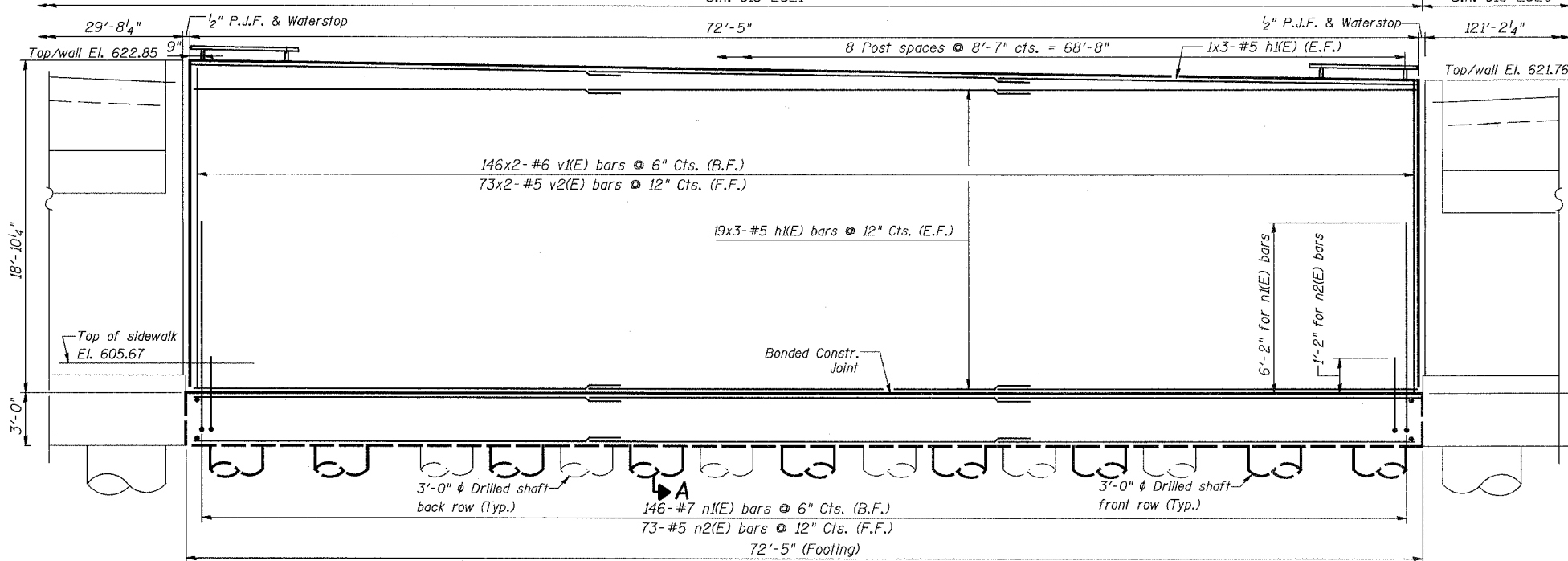


STATE OF ILLINOIS  
DEPARTMENT OF TRANSPORTATION

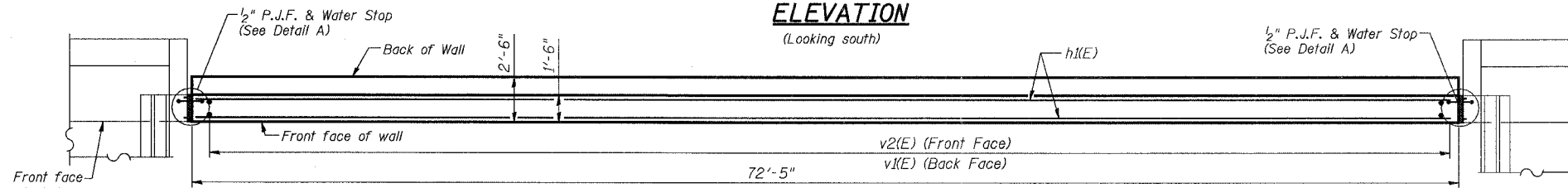
| ROUTE NO.             | SECTION    | COUNTY   | TOTAL SHEETS      | SHEET NO. |
|-----------------------|------------|----------|-------------------|-----------|
| F.A.P. 351            | 2008-001VB | COOK     | 579               | 448       |
| FED. ROAD DIST. NO. 7 |            | ILLINOIS | FED. AID PROJECT- |           |

SHEET NO. 38  
54 SHEETS

CONTRACT NO. 60E10

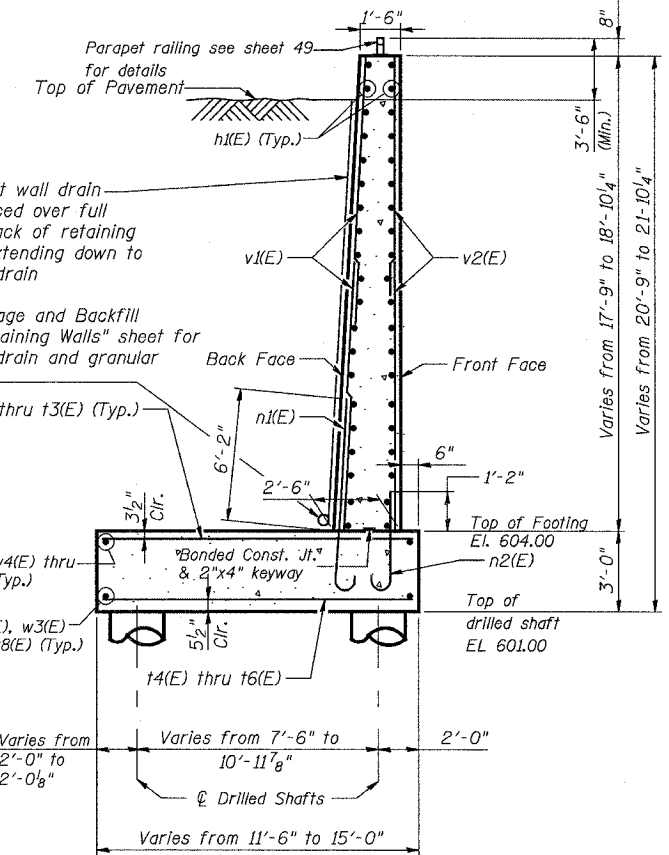


**ELEVATION**  
(Looking south)



**PLAN**

SCALE: 1/4" = 1'-0"  
(Parapet Railing not shown for clarity)

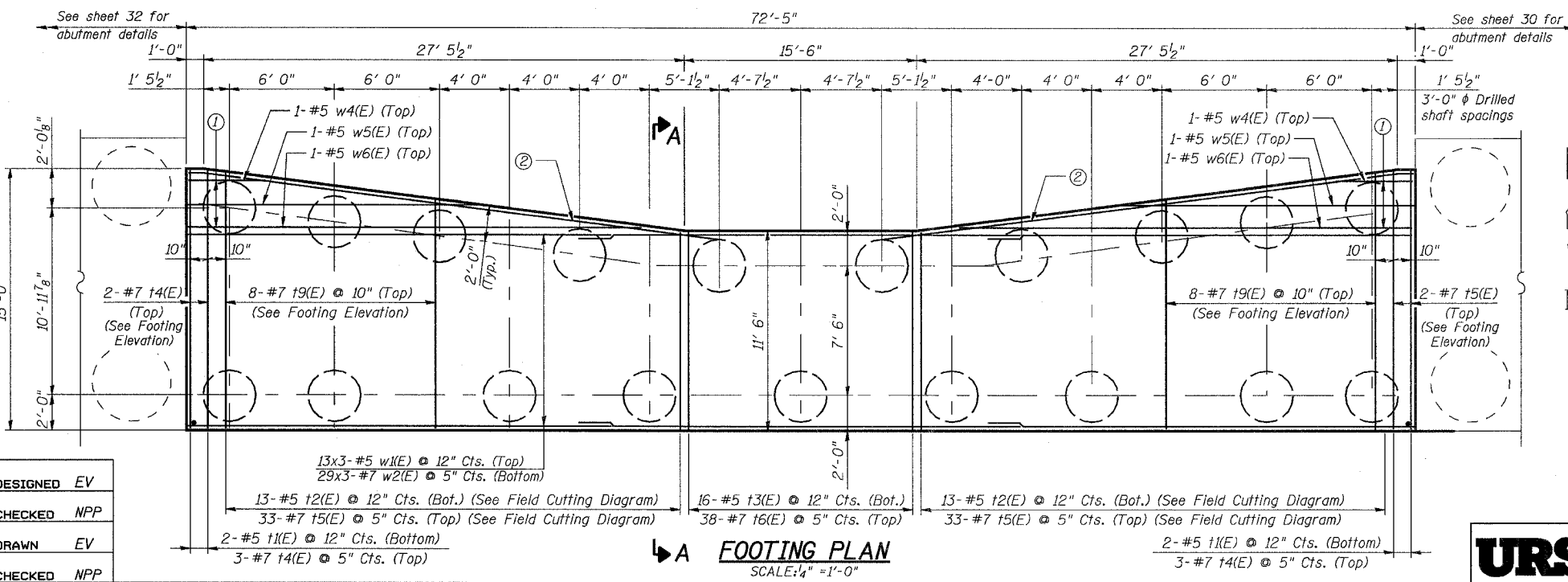


**SECTION A-A**

- ① 4-#7 w3(E) bars @ 5" Cts. (Bottom)  
(See Field Cutting Diagram)
- ② 1-#5 w7(E) bar (Top) (Bend in Field)  
1-#7 w8(E) bar (Bottom) (Bend in Field)

Notes:

1. Work this Sheet with Sheets 39 and 40.
2. Reinforcement bars designated (E) shall be epoxy coated.
3. For Bill of Materials and bar bend details see Sheet 40.
4. Min. lap length for #5 bar is 2'-2", #6 bar is 2'-7" and #7 bar is 3'-10".
5. Bars indicated thus 20 x 3-#15 etc. indicates 20 lines of bars with 3 lengths per line.
6. If the Contractor elects to use cast-in-place anchors device for Parapet Railing post, then the Contractor must coordinate fabrication of the Parapet Railing with respect to as-built locations of the cast-in-place anchors. The Contractor shall correct any errors in fabrication of Parapet Railing with respect to as-built locations of cast-in-place anchors at his own expense.



**FOOTING PLAN**  
SCALE: 1/4" = 1'-0"

3/13/2008 2:52:47 PM c:\17049\069\structures\2820.w.hwdwg\ref\mol.plans\38-south-retain-wall.dwg

|          |     |
|----------|-----|
| DESIGNED | EV  |
| CHECKED  | NPP |
| DRAWN    | EV  |
| CHECKED  | NPP |

**URS**  
100 South Wacker Drive,  
Suite 500  
Chicago, IL 60606  
(312) 939-1000

| REVISIONS |      |
|-----------|------|
| NAME      | DATE |
|           |      |
|           |      |
|           |      |
|           |      |
|           |      |

ILLINOIS DEPARTMENT OF TRANSPORTATION  
US RTE 6 FROM I-294 TO IL RTE 1  
**SOUTH RETAINING WALL**  
SN 016-2821  
STRUCTURES FOR CN INTERMODAL  
YARD VEHICLES OVER U.S. RTE. 6 (159TH STREET)  
STATION 95+02.14 STRUCTURE NOS. 016-2820 & 016-2821  
SCALE: 1/4" = 1'-0" DATE: 9/21/2008