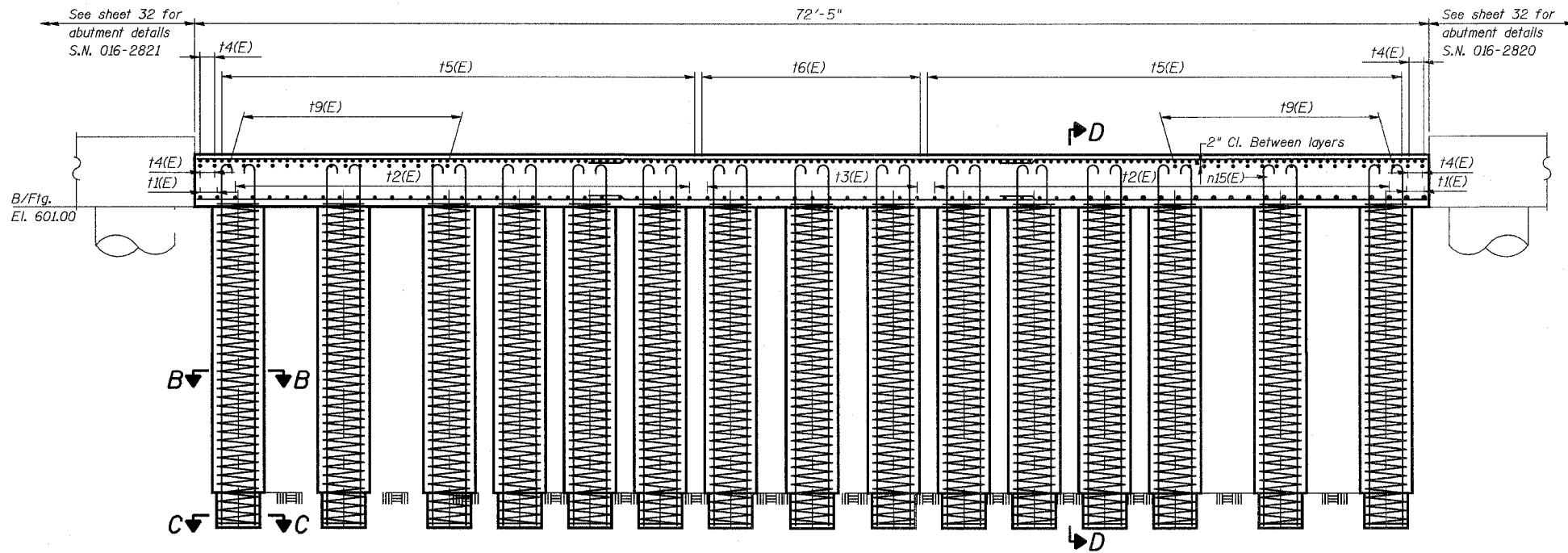


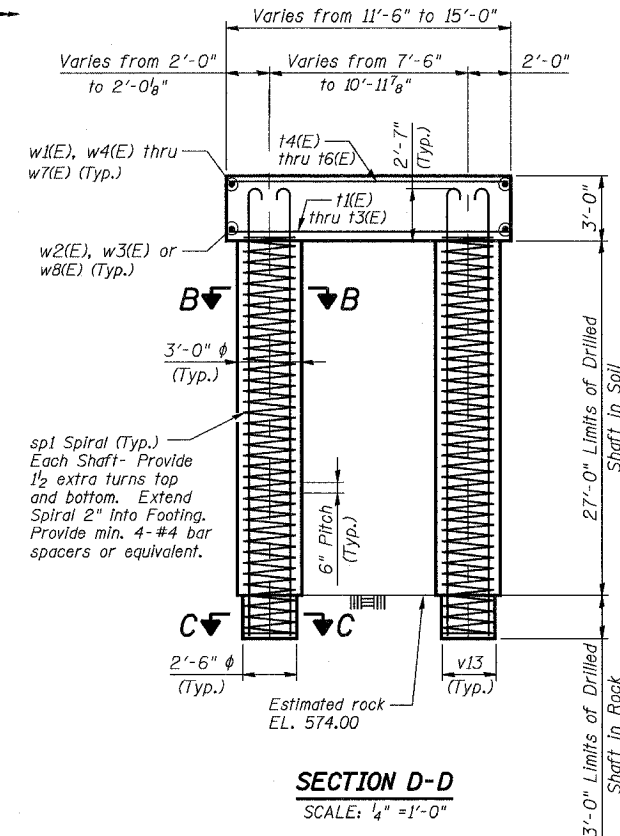
STATE OF ILLINOIS
DEPARTMENT OF TRANSPORTATION

ROUTE NO.	SECTION	COUNTY	TOTAL SHEETS	SHEET NO.
F.A.P. 351	2008-001VB	COOK	579	449
FED. ROAD DIST. NO. 7	ILLINOIS	FED. AID PROJECT	CONTRACT NO. 60E10	

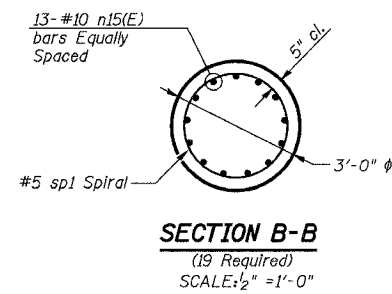
SHEET NO. 39
54 SHEETS



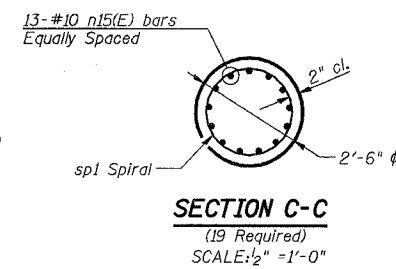
FOOTING ELEVATION
SCALE: 1/4" = 1'-0"



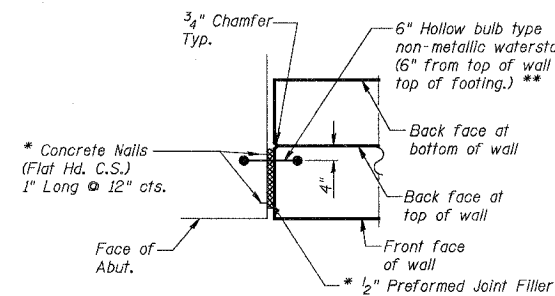
SECTION D-D
SCALE: 1/4" = 1'-0"



SECTION B-B
(19 Required)
SCALE: 1/2" = 1'-0"



SECTION C-C
(19 Required)
SCALE: 1/2" = 1'-0"



DETAIL A
SCALE: N.T.S.

* Cost Included with Concrete Structures.
** Contractor to provide protective cover for Water Seal subject to the approval of the Engineer.

Drilled Shafts shall be drilled to Elevation shown. Quantities and Detailing are for the estimated Elevations shown on the Plans. The actual conditions encountered in each Shaft may differ and the Drilled Shaft and Reinforcement Quantities shall be adjusted accordingly as directed by the Engineer and paid for at the corresponding Unit Bid Price.

Notes:

1. Work this Sheet with Sheets 38 and 40.
2. Reinforcement bars designated (E) shall be epoxy coated.
3. For Bill of Materials and bar bend details, see Sheet 40.
4. See Sheet 38 for footing plan.

Min. Lap Splice for Spiral = 2'-0"

3/13/2008 2:52:47 PM c:\17049\069\structures\2820.w.hvu\dwa\refinal\plans\39-south retain_wall12.dwg

DESIGNED	EV
CHECKED	NPP
DRAWN	EV
CHECKED	NPP

URS
100 South Wacker Drive,
Suite 500
Chicago, IL 60606
(312) 939-1000

REVISIONS	
NAME	DATE

ILLINOIS DEPARTMENT OF TRANSPORTATION
US RTE 6 FROM I-294 TO IL RTE 1
SOUTH RETAINING WALL
FOUNDATION SN 016-2821
STRUCTURES FOR CN INTERMODAL
YARD VEHICLES OVER U.S. RTE. 6 (159TH STREET)
STATION 95+02.14 STRUCTURE NOS. 016-2820 & 016-2821
SCALE: AS NOTED DATE: 2/21/2008