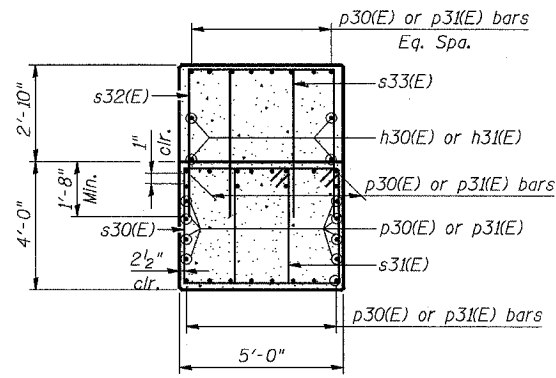


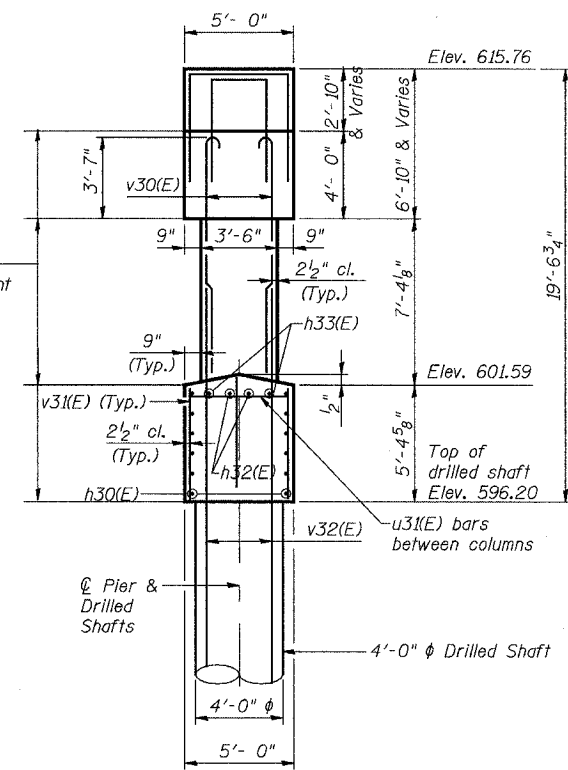
STATE OF ILLINOIS  
DEPARTMENT OF TRANSPORTATION

ROUTE NO.	SECTION	COUNTY	TOTAL SHEETS	SHEET NO.
F.A.P. 351	2008-001VB	COOK	579	452
FED. ROAD DIST. NO. 7		ILLINOIS	FED. AID PROJECT-	
CONTRACT NO. 60E10				

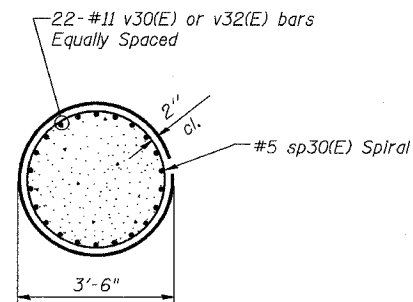
SHEET NO. 42  
54 SHEETS



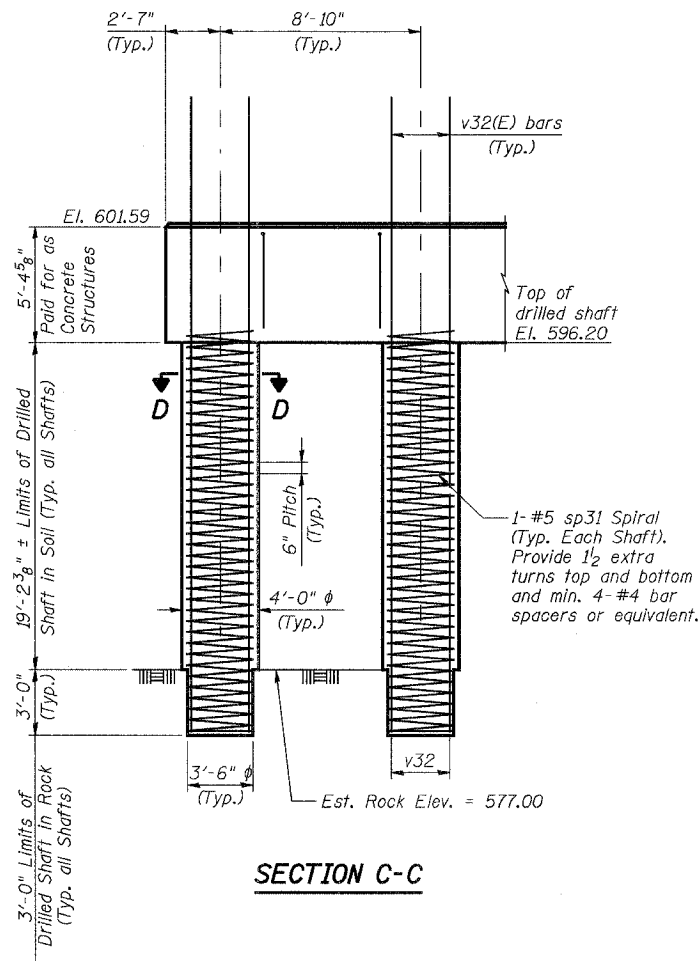
SECTION A-A



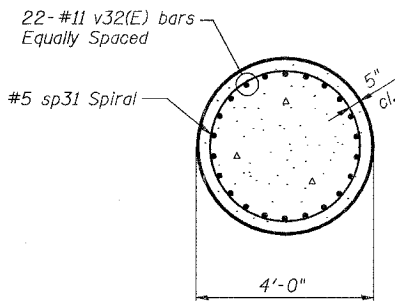
END VIEW



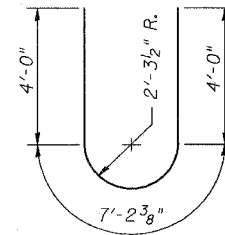
SECTION B-B



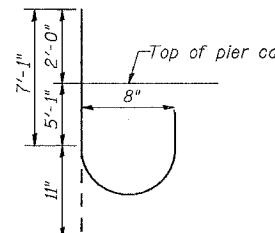
SECTION C-C



SECTION D-D  
(14 Required)

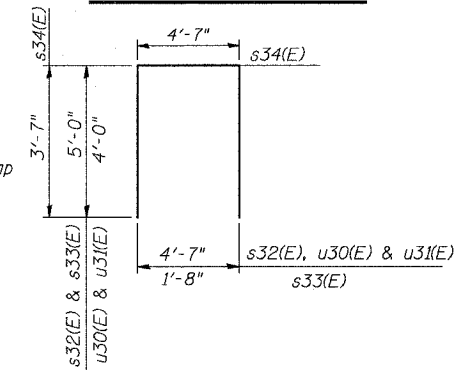


BAR u32(E)

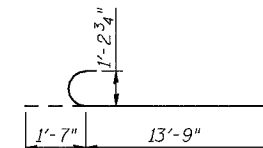


BAR j(E)

BARS s30(E) & s31(E)



BARS s32(E), s33(E), s34(E)  
u30(E) & u31(E)



BAR v30(E)

PIER BILL OF MATERIAL

Bar	No.	Size	Length	Shape
h30(E)	32	#5	32'-6"	—
h31(E)	32	#5	28'-10"	—
h32(E)	26	#5	4'-4"	—
h33(E)	26	#5	4'-8"	—
h40(E)	5	#5	40'-10"	—
h41(E)	5	#5	20'-2"	—
h42(E)	5	#5	36'-6"	—
h43(E)	5	#5	22'-2"	—
p30(E)	96	#10	26'-8"	—
p31(E)	64	#10	32'-0"	—
s30(E)	130	#5	17'-3"	□
s31(E)	52	#5	11'-5"	□
s32(E)	117	#5	14'-7"	□
s33(E)	116	#5	11'-8"	□
s34(E)	98	#5	11'-9"	□
sp30(E)	14	#5	13'-0"	
sp31	14	#5	22'-6"	
u30(E)	9	#6	12'-7"	—
u31(E)	38	#5	12'-7"	—
u32(E)	9	#6	15'-3"	—
v30(E)	308	#11	15'-4"	—
v31(E)	250	#5	5'-2"	—
v32(E)	308	#11	35'-0"	—
j(E)	124	#8	8'-0"	—
Bar Splicer		Each	46	
Structure Excavation		Cu Yd	212	
Concrete Structures		Cu Yd	318.9	
Reinforcement Bars		Pound	6,360	
Reinforcement Bars, Epoxy Coated		Pound	129,990	
Drilled Shaft in Soil		Cu. Yd.	125	
Drilled Shaft in Rock		Cu. Yd.	15	
Non-Special Waste Disposal		Cu. Yd.	204.0	

Notes:

1. Reinforcement Bars designated (E) shall be epoxy coated.
2. Length of Spiral given is height of Spiral. Weight includes weight of spacers for Spiral.
3. Drilled Shafts shall be drilled to Elevation shown. Quantities and Detailing are for the estimated Elevations shown on the Plans. The actual conditions encountered in each Shaft may differ and the Drilled Shaft and Reinforcement Quantities shall be adjusted accordingly as directed by the Engineer and paid for at the corresponding Unit Bid Price.
4. See Sheet 41 for location of Sections A-A, B-B and C-C.
5. Tops of the drilled shafts and their associated reinforcing steel shall be located in accordance with tolerances required for the construction of the pier columns above them.
6. See Sheet 21 for locations of j(E) bars.

REVISIONS	
NAME	DATE

ILLINOIS DEPARTMENT OF TRANSPORTATION  
US RTE 6 FROM I-294 TO IL RTE 1  
**PIER DETAILS SN 016-2820**

STRUCTURES FOR CN INTERMODAL  
YARD VEHICLES OVER U.S. RTE. 6 (159TH STREET)  
STRUCTURE NOS. 016-2820 & 016-2821  
SCALE: N.T.S. DATE: 2/21/2008

**URS**  
100 South Wacker Drive,  
Suite 500  
Chicago, IL 60606  
(312) 939-1000

3/13/2008 2:52:49 PM C:\p1\2049\069\structures\2820\_w\_hwa\dwg\prefinal\plans\42\_pier-2820det.dwg

DESIGNED	EV
CHECKED	NPP
DRAWN	EV
CHECKED	NPP