

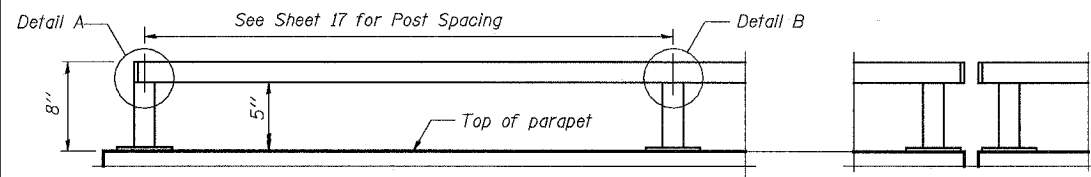
STATE OF ILLINOIS
DEPARTMENT OF TRANSPORTATION

ROUTE NO.	SECTION	COUNTY	TOTAL SHEETS	SHEET NO.
F.A.P. 351	2008-001VB	COOK	579	457
FED. ROAD DIST. NO. 7		ILLINOIS	FED. AID PROJECT	
CONTRACT NO. 60E10				

SHEET NO. 47
54 SHEETS

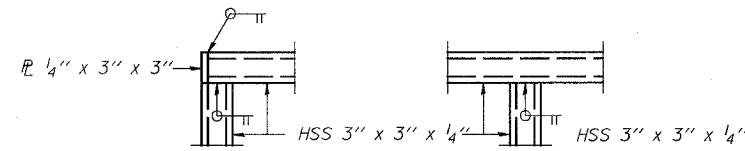
NOTES

Railing shall be according to Section 509 of the Standard Specifications, except as noted, and will be paid for at the Contract Unit Price per Foot for Parapet Railing.
Hollow structural sections shall conform to the requirements of ASTM designation A 500, Grade B, structural steel tubing.
All other steel shapes and plates shall conform to the requirements of AASHTO M 270 Grade 36.
If the option of drilling and epoxy grouting the anchor rods is chosen, the Contractor shall use the capsule or the adhesive cartridge type anchor rods that have been previously tested and given a prior approval by the Department. The Contractor shall install these anchor rods in pre-drilled holes according to the manufacturer's recommendations and procedures. The capsule or the adhesive cartridge shall be sealed with pre-measured amounts of the adhesive chemical.
Space reinforcement to miss anchor rods.
Extend the railing beyond the last post such that the gap between railing on the bridge parapet and railing on retaining wall does not exceed 3 inches.



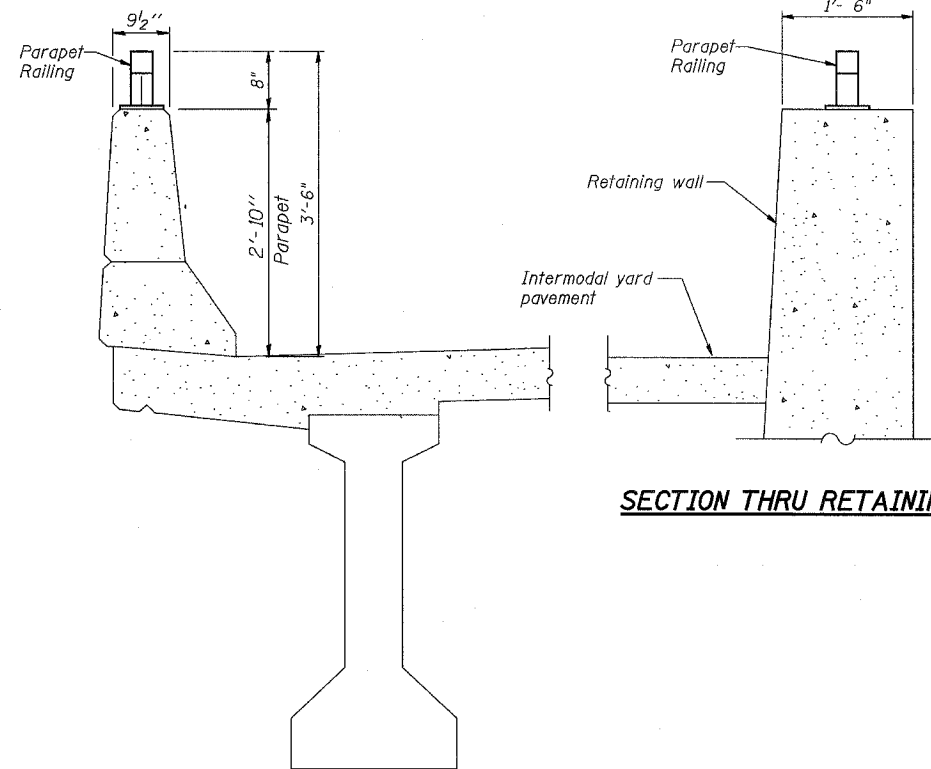
PARAPET RAILING ELEVATION
(Inside Face of Two Element Rail)

PARAPET RAILING ELEVATION AT EXPANSION JOINT



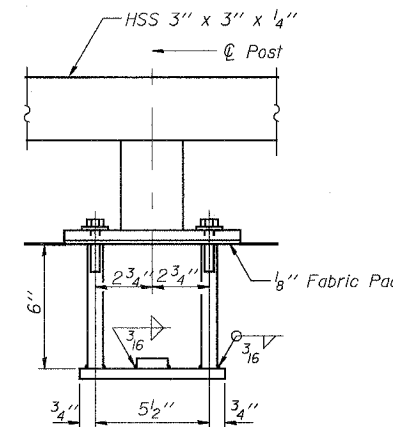
DETAIL A

DETAIL B



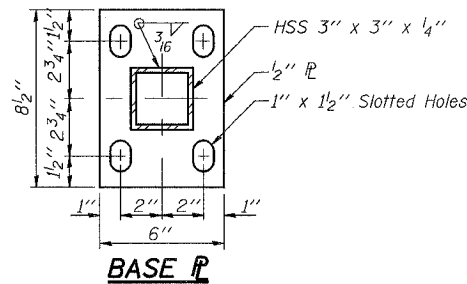
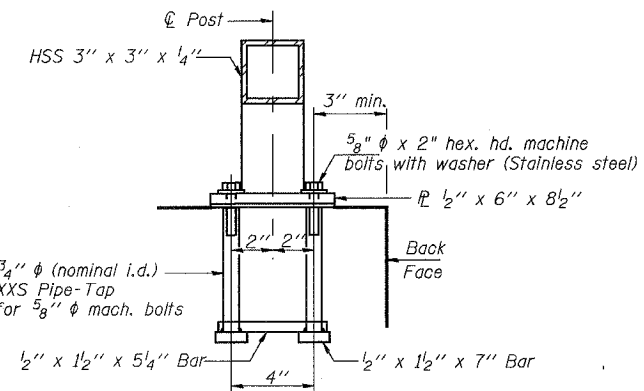
SECTION THRU RETAINING WALL

SECTION THRU DECK

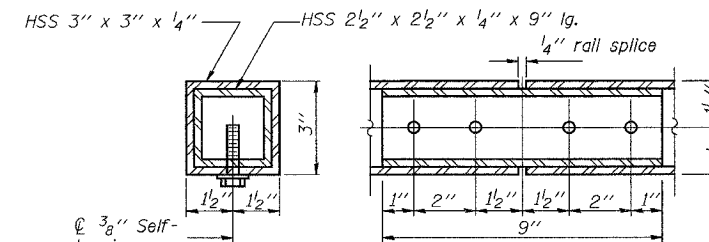


ANCHOR BOLT DETAILS

In lieu of the cast-in-place anchor device shown, the Contractor has the option of drilling and epoxy grouting 5/8" diameter anchor rods. Embedment shall be according to the manufacturer's specifications.



BASE PLATE



RAIL SPLICE

BILL OF MATERIAL

Item	Unit	Quantity
Parapet Railing	Foot	330

3/13/2008 3:08:45 PM

G:\17049\structures\2820_w_hwi\dwg\pref\plans\47-railing.dgn

DESIGNED	EV
CHECKED	NPP
DRAWN	EV
CHECKED	NPP

(10'-0" Maximum Post Spacing)

REVISIONS	
NAME	DATE

ILLINOIS DEPARTMENT OF TRANSPORTATION
US RTE 6 FROM I-294 TO IL RTE 1
PARAPET RAILING DETAILS

STRUCTURES FOR CN INTERMODAL
YARD VEHICLES OVER U.S. RTE. 6 (159TH STREET)
STATION 95+02.14 STRUCTURE NOS. 016-2820 & 016-2821
SCALE: N.T.S. DATE: 2/21/2008

URS
100 South Wacker Drive,
Suite 500
Chicago, IL 60606
(312) 939-1000