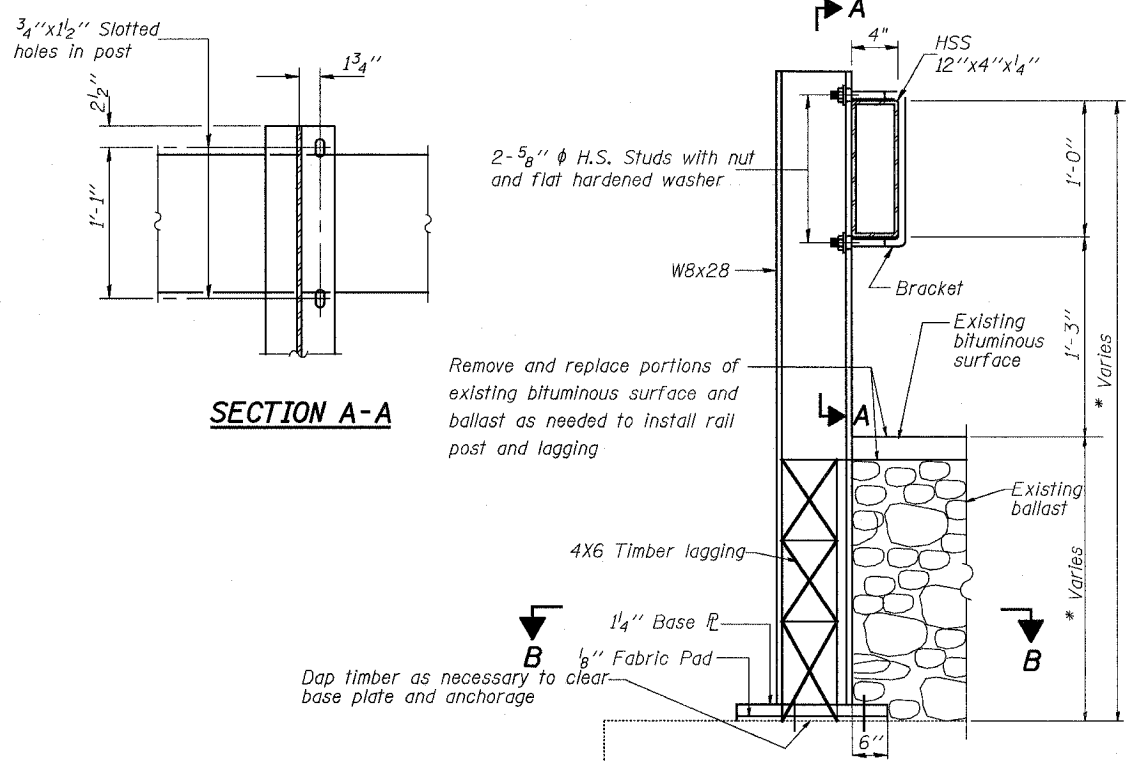


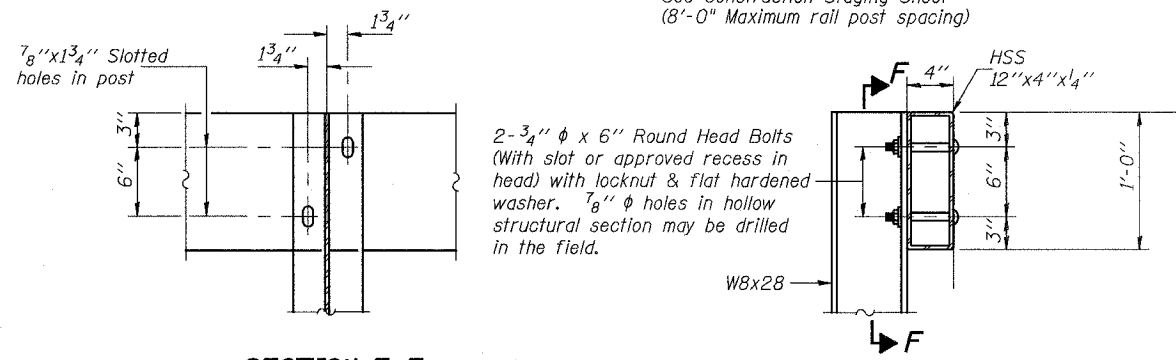
ROUTE NO.	SECTION	COUNTY	TOTAL SHEETS	SHEET NO.
F.A.P. 351	2008-001VB	COOK	579	458
FED. ROAD DIST. NO. 7		ILLINOIS FED. AID PROJECT-		
CONTRACT NO. 60E10				

SHEET NO. 48  
54 SHEETS

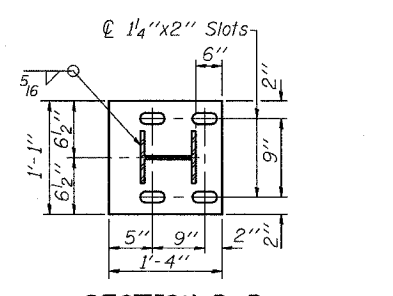


Remove and replace portions of existing bituminous surface and ballast as needed to install rail post and lagging.

**DETAIL 2**  
**SECTION AT RAIL POST**  
See Construction Staging Sheet (8'-0" Maximum rail post spacing)

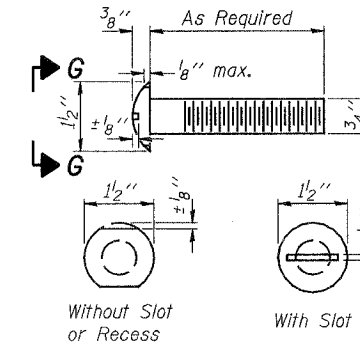
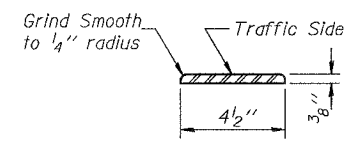


**ALTERNATE RAIL ATTACHMENT DETAIL**

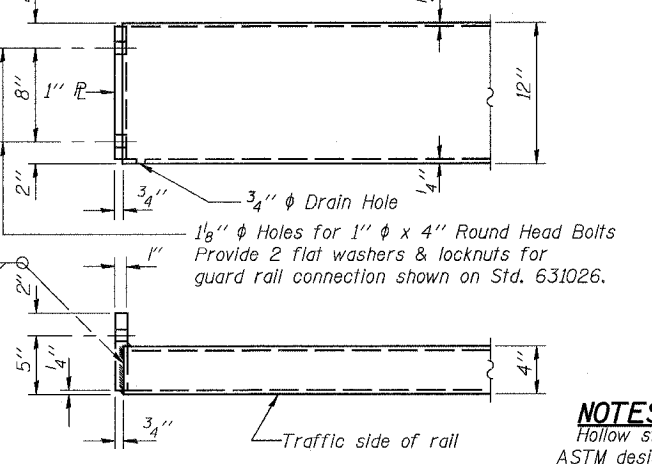
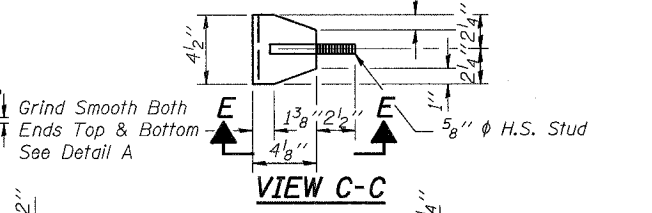
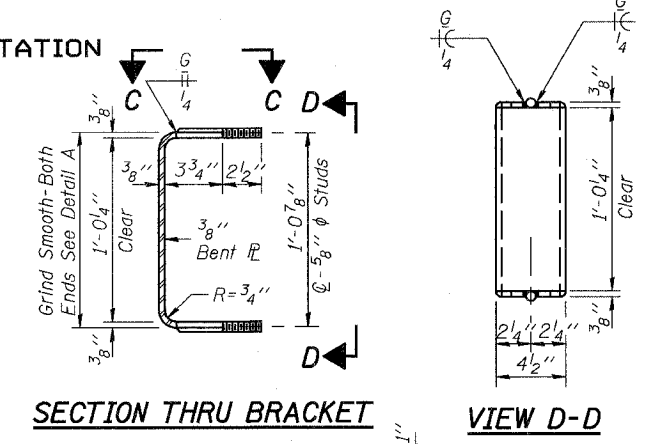


**ANCHORAGE DETAILS**

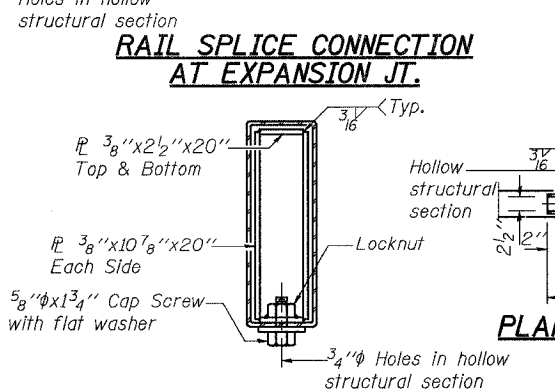
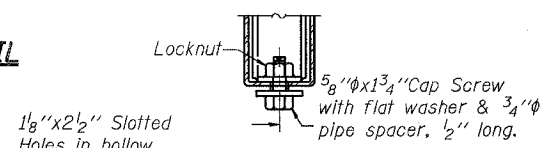
**STATE OF ILLINOIS**  
**DEPARTMENT OF TRANSPORTATION**



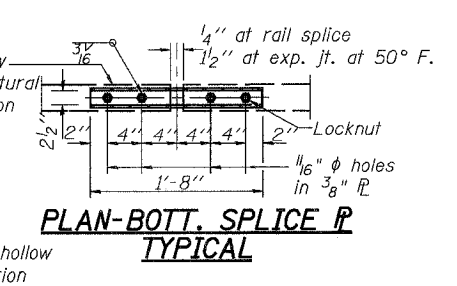
\* Field verify depth of ballast below pavement surface before fabricating each rail post.



**END OF RAIL DETAILS**



**SECTION AT RAIL SPLICE**



**NOTES**

Hollow structural sections shall conform to the requirements of ASTM designation A 500 Grade B Structural Steel Tubing.

All other steel shapes and plates shall conform to the requirements of AASHTO M 270 Grade 36 except posts and brackets shall conform to AASHTO M 270, Grade 50.

Bolts, cap screws, and nuts shall conform to the requirements of ASTM designation A 307 except for high strength bolts, threaded rods, studs, nuts and washers noted which shall conform to AASHTO M 164.

The bridge rail shall receive one shop coat of a steel prime paint.

The 1"  $\phi$  high strength bolts or threaded rods used to connect the railposts shall be ASTM A-108, 120 ksi high strength concrete anchors and shall be tightened according to Article 505.04(f)(2) of the Standard Specifications.

Temporary Bridge Rail shall be according to Section 514 of the Standard Specifications, except as noted, and will be paid for at the contract unit price per foot for Temporary Bridge Rail.

The contact surfaces between post flange, rail and inside face of bracket for Alternate 1 shall be free of all lubricants.

The nut for 5/8"  $\phi$  high strength studs used in Alternate 1 to connect bracket to post shall be tightened to a snug fit and given an additional one half turn.

The cost of timber lagging between rail post will be considered as included in unit price for Temporary Bridge Rail.

REVISIONS		ILLINOIS DEPARTMENT OF TRANSPORTATION US RTE 6 FROM I-294 TO IL RTE 1 <b>TEMPORARY BRIDGE RAIL</b>
NAME	DATE	
		STRUCTURES FOR CN INTERMODAL YARD VEHICLES OVER U.S. RTE. 6 (159TH STREET) STATION 95+02.14 STRUCTURE NOS. 016-2820 & 016-2821 SCALE: DATE: 2/21/2008

**URS** 100 South Wacker Drive, Suite 500, Chicago, IL 60606 (312) 939-1000

3/13/2008 3:08:45 PM G:\17049\structures\2820\_w.hwl\dwg\prefinal\plans\48-temp\_bridge\_rail.dwg

DESIGNED	EW
CHECKED	MAB
DRAWN	EW
CHECKED	MAB