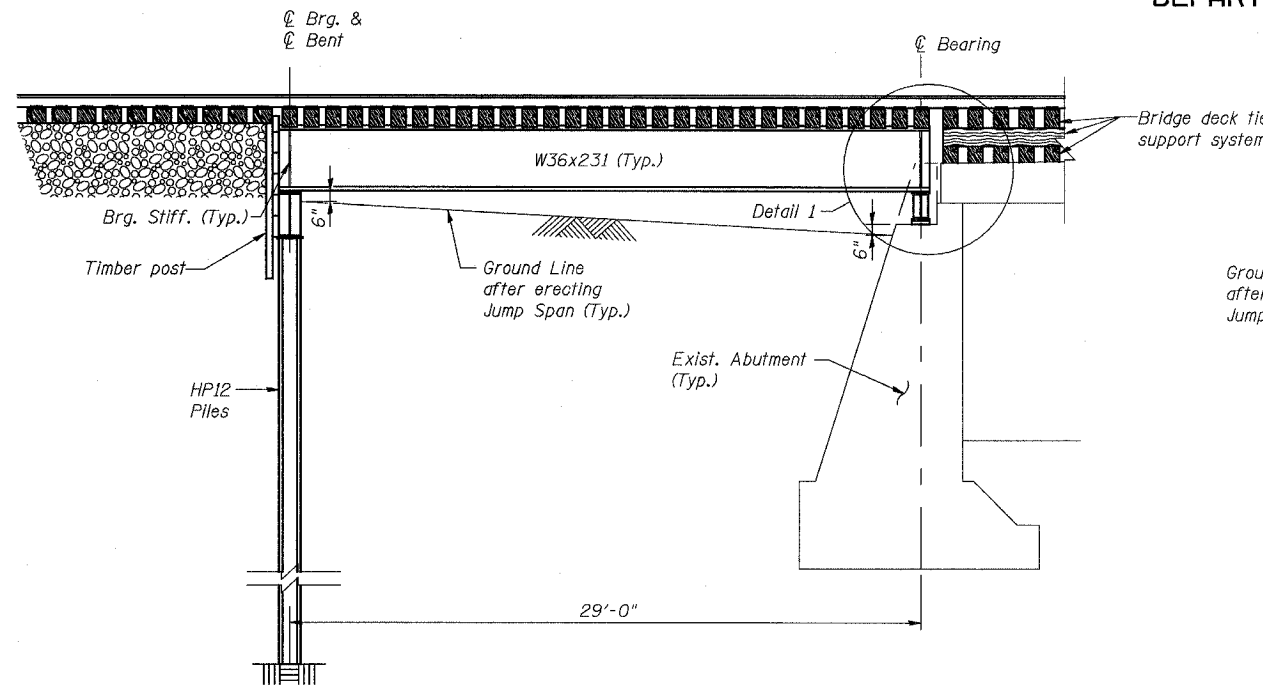


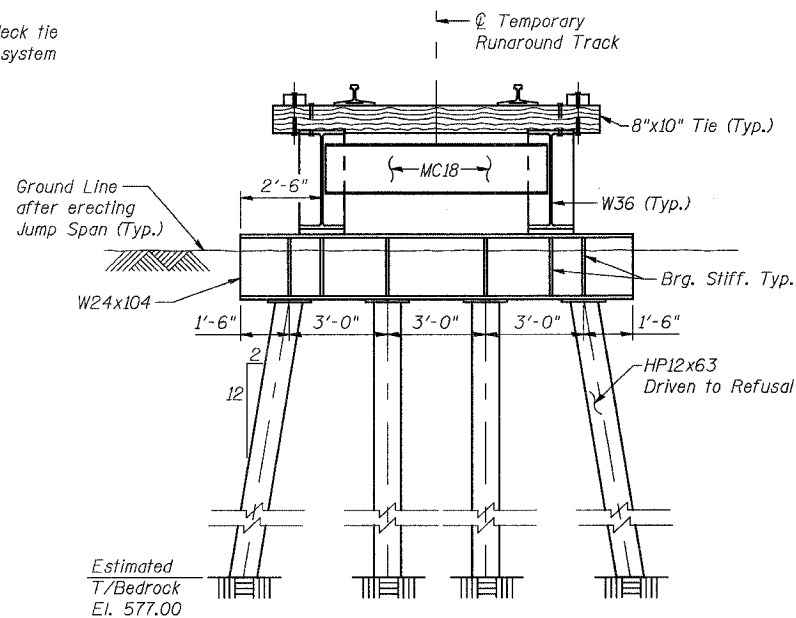
STATE OF ILLINOIS
DEPARTMENT OF TRANSPORTATION

ROUTE NO.	SECTION	COUNTY	TOTAL SHEETS	SHEET NO.
F.A.P. 351	2008-001VB	COOK	579	467
FED. ROAD DIST. NO. 7	ILLINOIS	FED. AID PROJECT-	CONTRACT NO. 60E10	

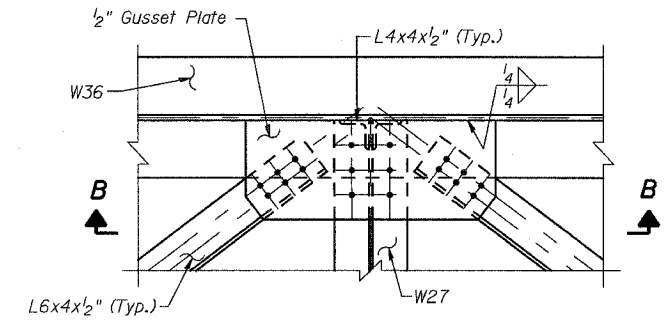
SHEET NO. 3
26 SHEETS



ELEVATION

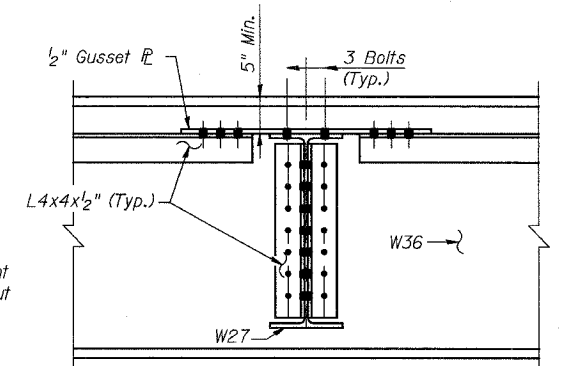


SECTION A-A

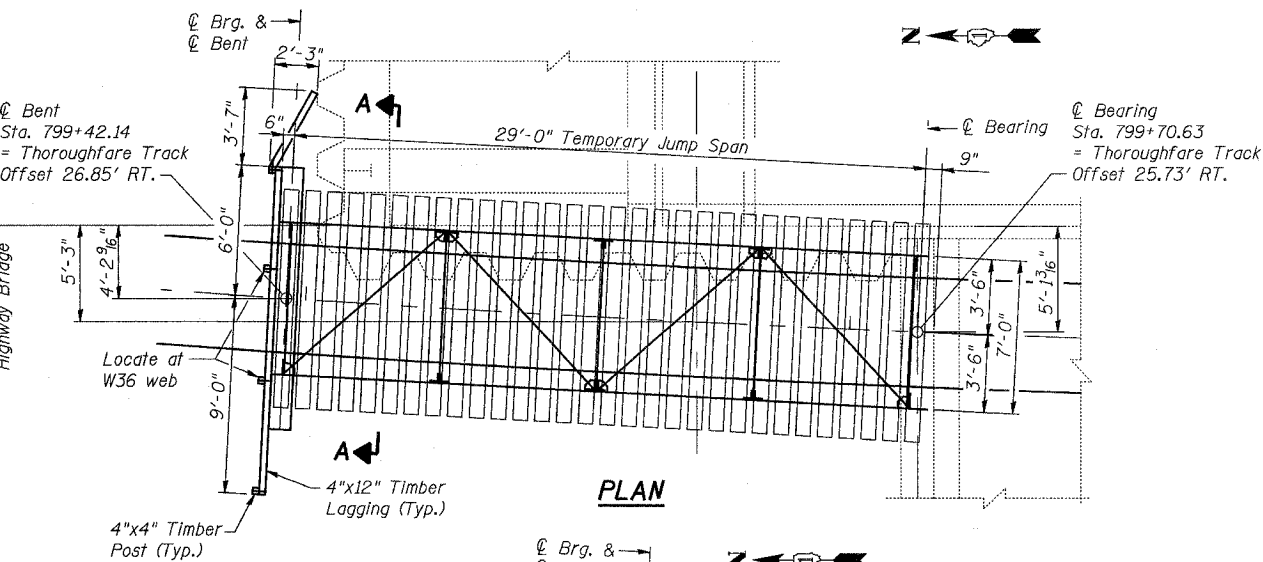


DETAIL 3
DETAIL 4 - SIMILAR

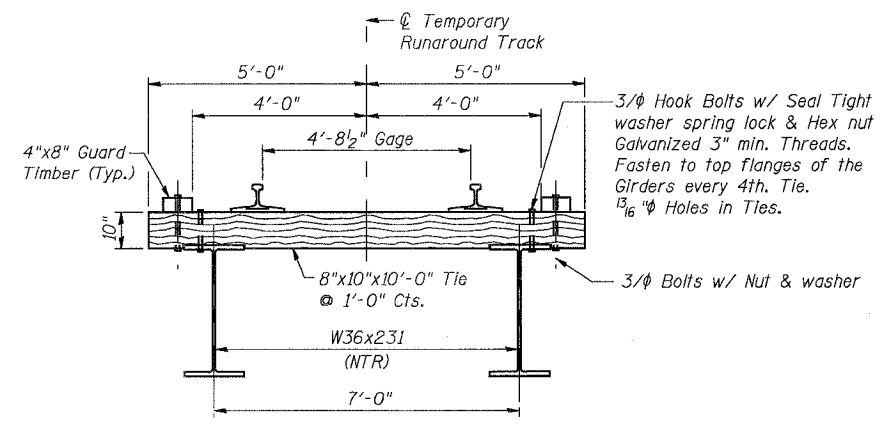
(Detail 4 - Omit Lateral Bracing and Gusset Pl.)



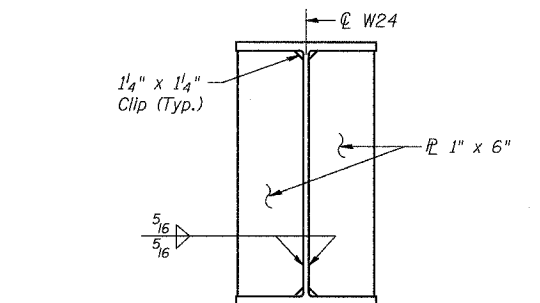
SECTION B-B



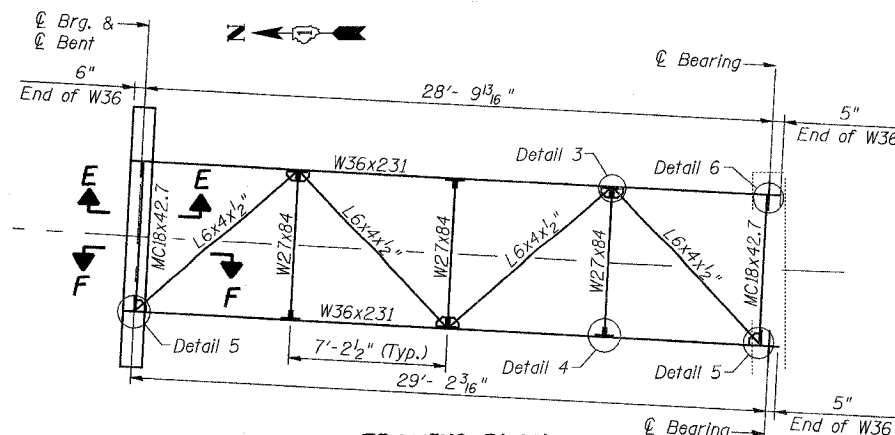
PLAN



TYPICAL SECTION THRU
TEMPORARY JUMP SPAN
(Looking South)



BEARING STIFFENER DETAIL
(At W24)



FRAMING PLAN

NOTES:

- For Sections E-E, F-F and Details 5 & 6, see Sheet 4.
- For Detail 1, see Sheet 4.
- Steel H Piles shall be according to AASHTO M270 Grade 50.
- All Steel shall be AASHTO M270 Grade 50.

3/13/2008 1:26:43 PM

C:\17049\069\structures\2822_e_rr\skg\03_jump_span.dgn

DESIGNED	MDS
CHECKED	JPB
DRAWN	MDS
CHECKED	JPB

URS 100 South Wacker Drive,
Suite 500
Chicago, IL 60606
(312) 939-1000

REVISIONS	NAME	DATE

ILLINOIS DEPARTMENT OF TRANSPORTATION
US RTE 6 FROM I-294 TO IL RTE 1
**TEMP. JUMP SPAN PLAN,
ELEVATION & DETAILS**
CN THOROUGHFARE TRACK
BRIDGE 20.6E OVER U.S. RTE. 6 (159TH STREET)
STRUCTURE NO. 016-2822
SCALE: N.T.S. DATE: 2/21/2008