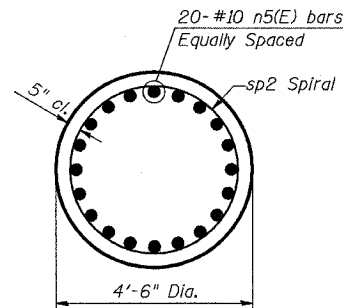


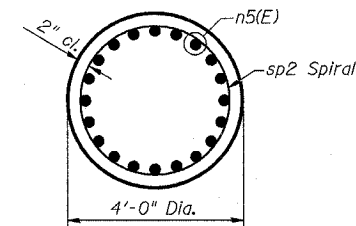
STATE OF ILLINOIS
DEPARTMENT OF TRANSPORTATION

ROUTE NO.	SECTION	COUNTY	TOTAL SHEETS	SHEET NO.
F.A.P. 351	2008-001VB	COOK	579	480
FED. ROAD DIST. NO. 7		ILLINOIS	FED. AID PROJECT-	
CONTRACT NO. 60E10				

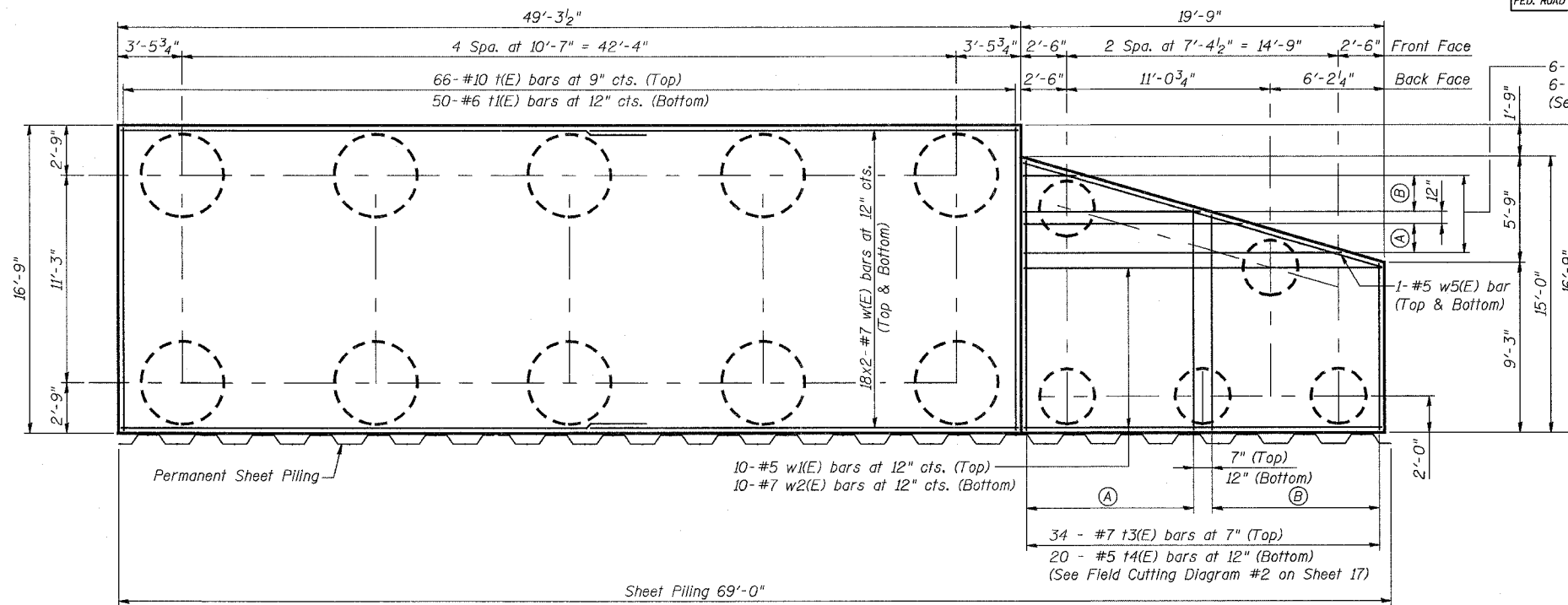
SHEET NO. 16
26 SHEETS



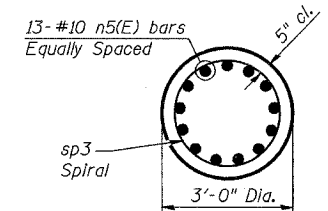
SECTION A-A
(10 Required)
N.T.S.



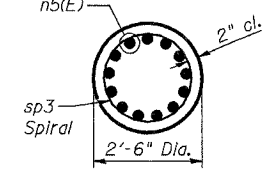
SECTION B-B
(10 Required)
N.T.S.



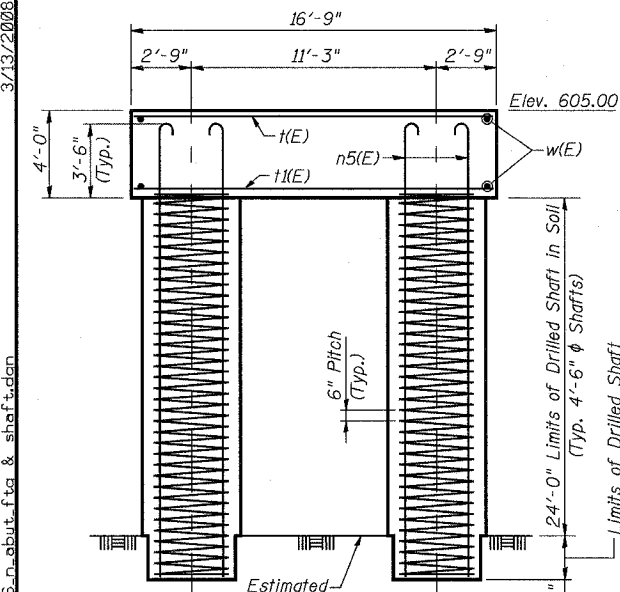
FOOTING PLAN
 $1/4''=1'-0''$



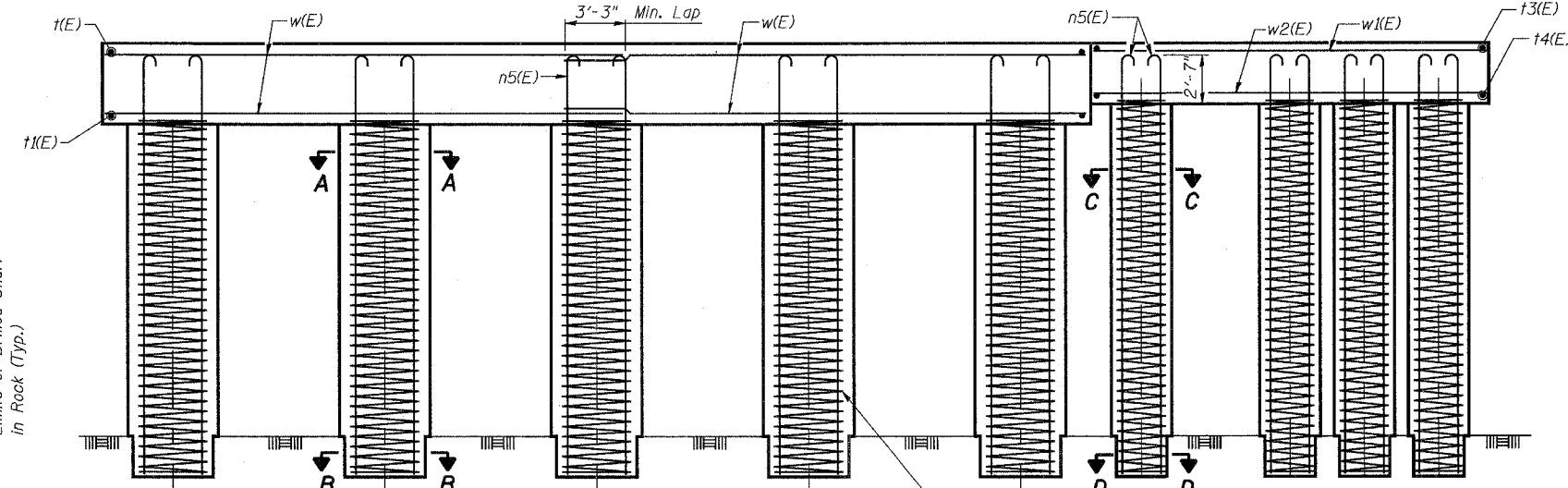
SECTION C-C
(5 Required)
N.T.S.



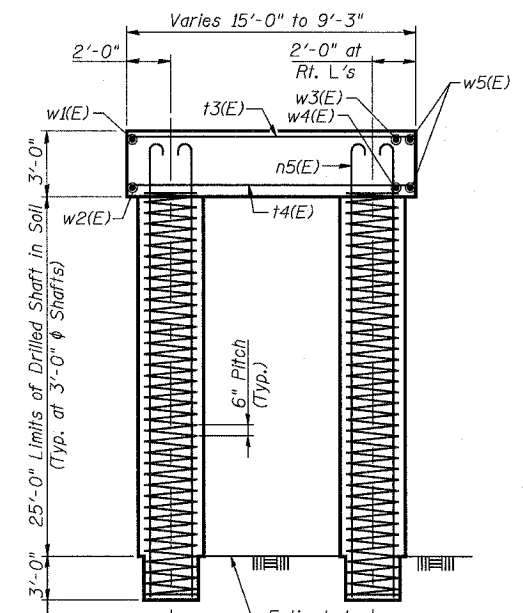
SECTION D-D
(5 Required)
N.T.S.



END VIEW
 $1/4''=1'-0''$



ELEVATION
 $1/4''=1'-0''$



END VIEW
 $1/4''=1'-0''$

- NOTES:**
1. Reinforcement designated (E) shall be epoxy coated.
 2. Work this sheet with Sheets 13 through 17.
 3. For Field Cutting Diagram #1 and #2 see Sheet 17.
 4. Drilled Shafts shall be drilled to Elevation 574.00. Quantities and Detailing are for the estimated Elevations shown on the Plans. The actual conditions encountered in each Shaft may differ and the Drilled Shaft and Reinforcement Quantities shall be adjusted accordingly as directed by the Engineer and paid for at the corresponding Unit Bid Price.
 5. See Sheet 14 for Permanent Sheet Piling Detail.
 6. Spiral sp2 outer diameter = 3'-8".
Spiral sp3 outer diameter = 2'-2".

#5 sp2 or sp3 Spiral (Typ.)
Each Shaft- Provide 1/2 extra turns top and bottom. Extend Spiral 2" into Footing. Provide min. 4-#4 bar spacers or equivalent.

Min. Lap Splice for Spiral = 2'-0"

3/13/2008 1:26:50 PM C:\17049_069\structures\2822.e-r\dwg\16.n-abut.fva & shaft.dgn

DESIGNED	MDS
CHECKED	JPB
DRAWN	MDS
CHECKED	JPB

URS
100 South Wacker Drive,
Suite 500
Chicago, IL 60606
(312) 939-1000

REVISIONS	
NAME	DATE

ILLINOIS DEPARTMENT OF TRANSPORTATION
US RTE 6 FROM I-294 TO IL RTE 1
**NORTH ABUTMENT
FOOTING & DRILLED SHAFTS**
CN THOROUGHFARE TRACK
BRIDGE 20.6E OVER U.S. RTE. 6 (159TH STREET)
STATION 96+36.66 STRUCTURE NO. 016-2822
SCALE: AS NOTED DATE: 2/21/2008