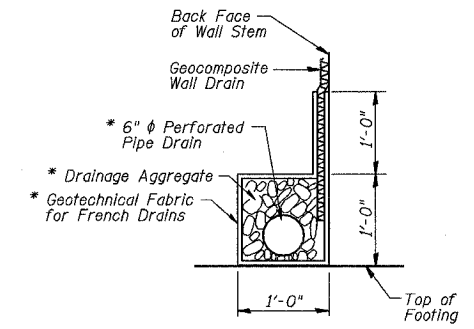
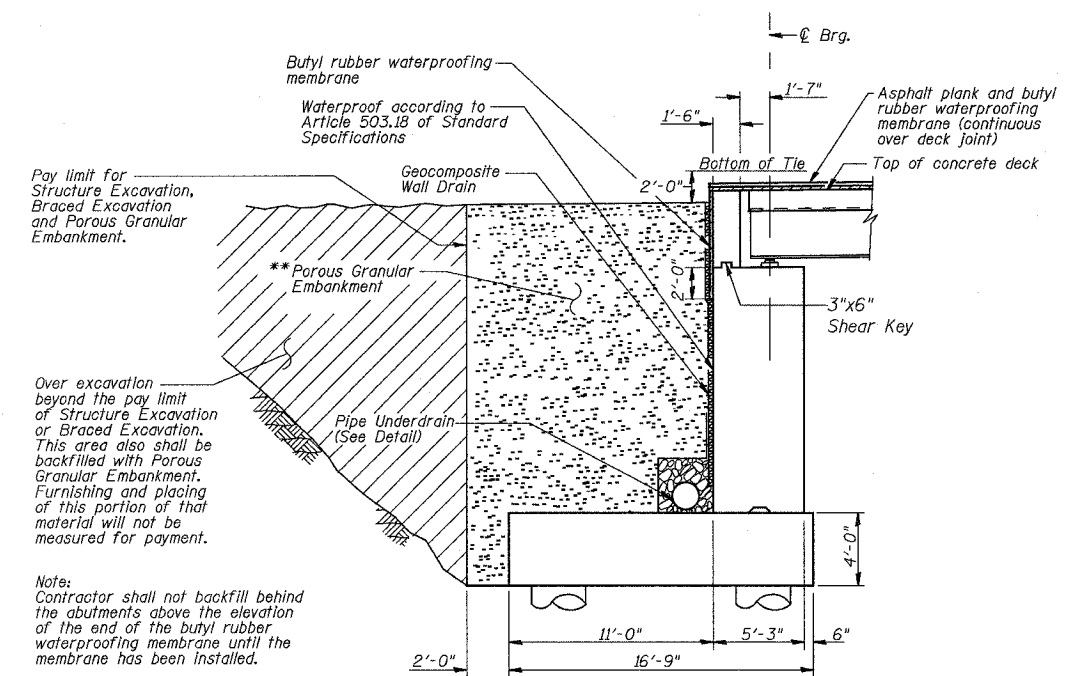
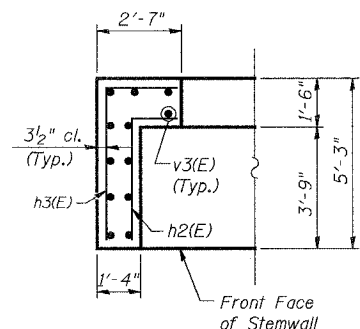
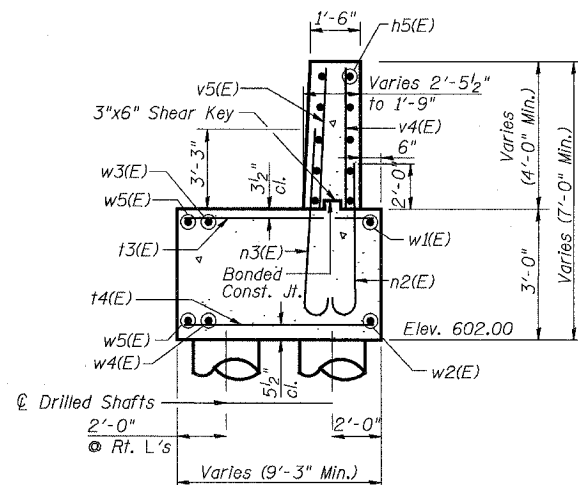
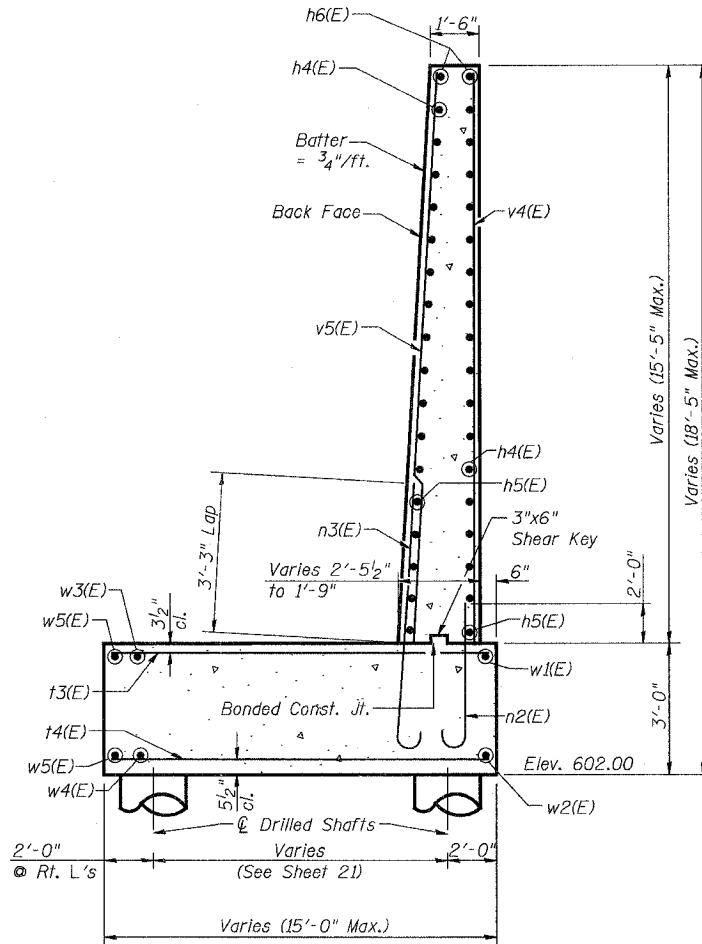
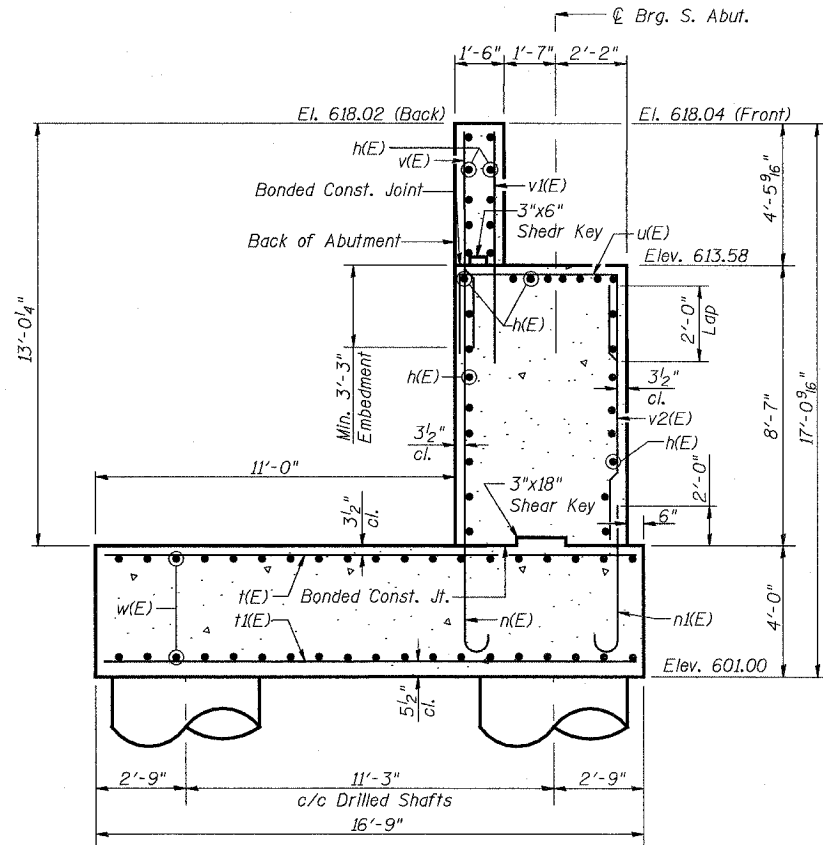


STATE OF ILLINOIS
DEPARTMENT OF TRANSPORTATION

ROUTE NO.	SECTION	COUNTY	TOTAL SHEETS	SHEET NO.
F.A.P. 351	2008-001VB	COOK	579	483
FED. ROAD DIST. NO. 7		ILLINOIS	FED. AID PROJECT-	
CONTRACT NO. 60E10				

SHEET NO. 19
26 SHEETS



- NOTES:
1. Reinforcement bars designated (E) shall be epoxy coated.
 2. Work this sheet with Sheets 18 through 22.
 3. Space reinforcement in seat to miss anchor bolts.
 4. See Sheet 22 for Bill of Materials.
 5. See Sheet 24 of U.S. 6 Mainline Retaining Walls Along 159th Street plans for Pipe Underdrain Layout and Quantities.

REVISIONS		ILLINOIS DEPARTMENT OF TRANSPORTATION US RTE 6 FROM I-294 TO IL RTE 1 SOUTH ABUTMENT-DETAILS I
NAME	DATE	
		CN THOROUGHFARE TRACK BRIDGE 20.6E OVER U.S. RTE. 6 (159TH STREET) STATION 96+36.66 STRUCTURE NO. 016-2822 SCALE: AS NOTED DATE: 2/21/2008

URS
100 South Wacker Drive,
Suite 500
Chicago, IL 60606
(312) 939-1000

3/13/2008 1:26:52 PM
c:\17049\669\structures\2822_e_rr\dwg\19_s_abut_det_1.dwg

DESIGNED	MDS
CHECKED	JPB
DRAWN	MDS
CHECKED	JPB