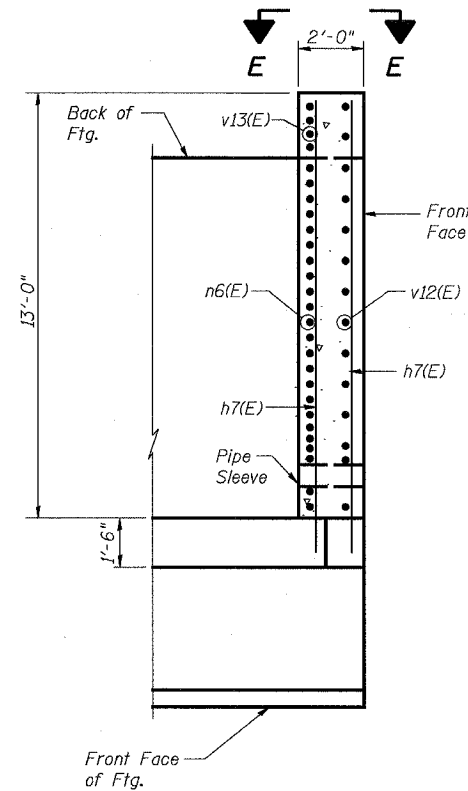


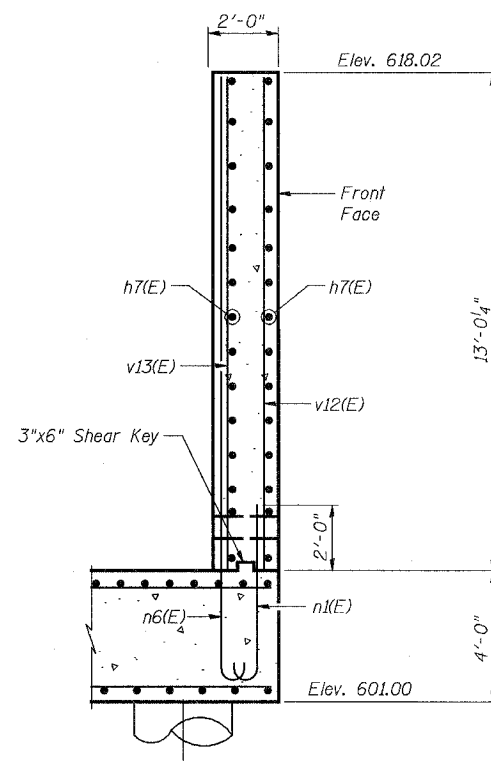
STATE OF ILLINOIS  
DEPARTMENT OF TRANSPORTATION

ROUTE NO.	SECTION	COUNTY	TOTAL SHEETS	SHEET NO.
F.A.P. 351	2008-001VB	COOK	579	484
FED. ROAD DIST. NO. 7	ILLINOIS	FED. AID PROJECT-	CONTRACT NO. 60E10	

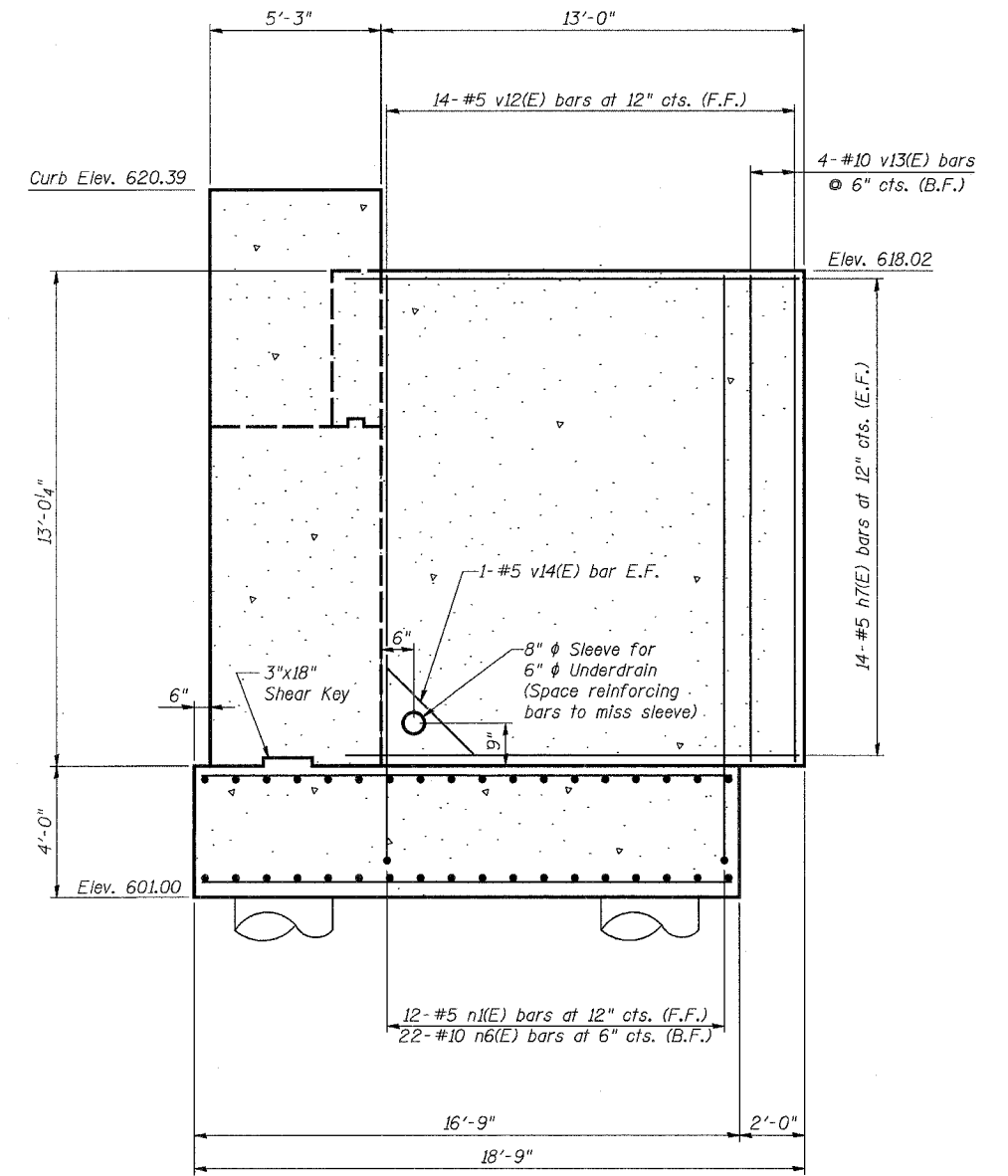
SHEET NO. 20  
26 SHEETS



**CLOSURE WALL PLAN**



**SECTION E-E**  
(Looking South)



**CLOSURE WALL ELEVATION**  
(Looking East)

**LEGEND**

F.F. - Front Face  
B.F. - Back Face  
E.F. - Each Face

**NOTES:**

1. Reinforcement bars designated (E) shall be epoxy coated.
2. Work this sheet with Sheets 18 through 22.
3. See Sheet 22 for Bill of Materials.
4. Cost of pipe sleeve is included with Concrete Structures.

3/13/2008 1:26:52 PM

G:\17049\069\structures\2822\_e\_rr\dwg\20\_s\_abut\_det\_1.dwg

DESIGNED	MDS
CHECKED	JPB
DRAWN	MDS
CHECKED	JPB

**URS**  
100 South Wacker Drive,  
Suite 500  
Chicago, IL 60606  
(312) 939-1000

REVISIONS	
NAME	DATE

ILLINOIS DEPARTMENT OF TRANSPORTATION  
US RTE 6 FROM I-294 TO IL RTE 1  
**SOUTH ABUTMENT  
DETAILS II**  
CN THOROUGHFARE TRACK  
BRIDGE 20.6E OVER U.S. RTE. 6 (159TH STREET)  
STATION 96+36.66 STRUCTURE NO. 016-2822  
SCALE: 3/8"=1'-0" DATE: 2/21/2008