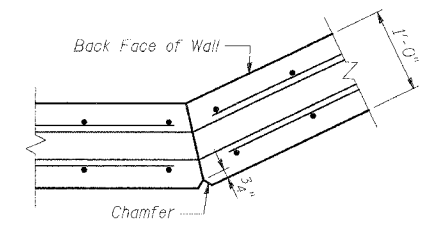
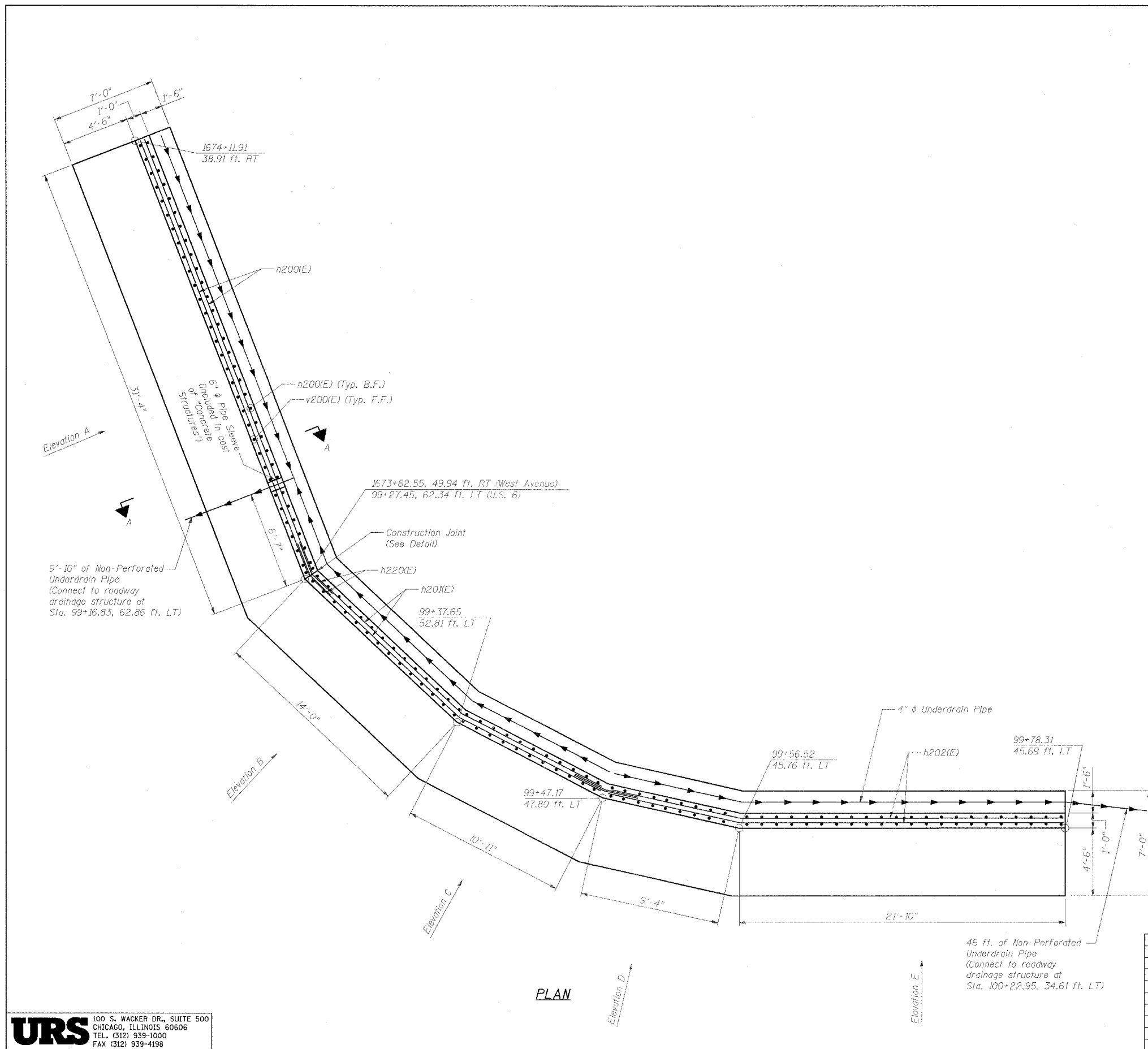


F.A.P. RTE.	SECTION	COUNTY	TOTAL SHEETS	SHEET NO.
351	2008-001VB	COOK	579	492
STA.		TO STA.		
FED. ROAD DIST. NO.		ILLINOIS FED. AID PROJECT		
CONTRACT NO. 60E10				



CONSTRUCTION JOINT DETAIL

LEGEND:

- F.F. = Front Face
- B.F. = Back Face
- E.F. = Each Face
- T&B = Top and Bottom

NOTES:

1. Work this Sheet with Sheet R1 & R3.
2. See Sheet R1 for Footing Reinforcement and Section A-A.
3. See Sheet R3 for Elevation A, B, C, D, & E.
4. Reinforcement bars designated (E) shall be epoxy coated.
5. Concrete clear cover shall be 2" minimum unless noted otherwise.
6. All edges shall have standard 3/4" chamfers except as noted.
7. Min. Lap for Bar #5 = 2'-2".

SHEET R2 OF R12

URS
 100 S. WACKER DR., SUITE 500
 CHICAGO, ILLINOIS 60606
 TEL. (312) 939-1000
 FAX (312) 939-4196

REVISIONS	
NAME	DATE

ILLINOIS DEPARTMENT OF TRANSPORTATION
 US RTE 6 FROM LEXINGTON AVE TO FISK AVE
 WEST AVENUE RETAINING WALL
 WALL PLAN
 DATE 02/21/08
 DRAWN BY MAD
 CHECKED BY JPB