

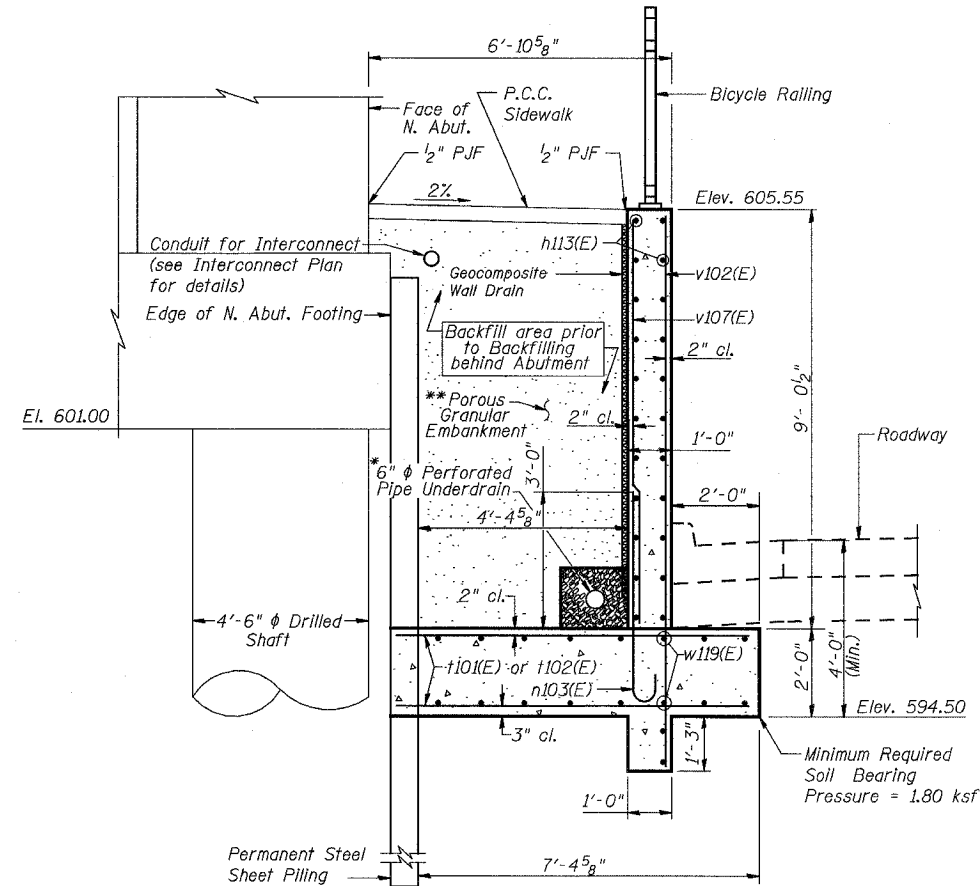
STATE OF ILLINOIS  
DEPARTMENT OF TRANSPORTATION

|                       |            |                  |                    |           |
|-----------------------|------------|------------------|--------------------|-----------|
| ROUTE NO.             | SECTION    | COUNTY           | TOTAL SHEETS       | SHEET NO. |
| F.A.P. 351            | 2008-001VB | COOK             | 579                | 513       |
| FED. ROAD DIST. NO. 7 | ILLINOIS   | FED. AID PROJECT | CONTRACT NO. 60E10 |           |

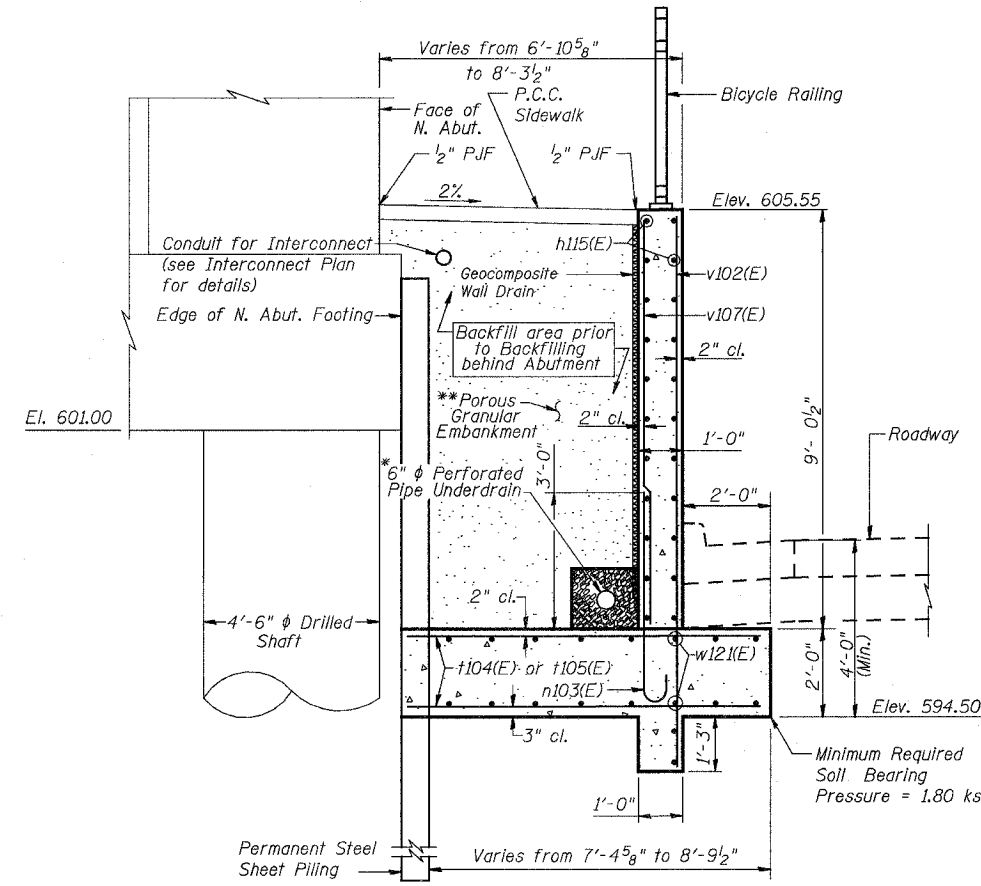
SHEET NO. 11  
24 SHEETS

**BILL OF MATERIAL  
RETAINING WALL "E"**

| Bar                               | No. | Size    | Length  | Shape |
|-----------------------------------|-----|---------|---------|-------|
| h113(E)                           | 40  | #5      | 21'-9"  | —     |
| h114(E)                           | 20  | #5      | 4'-8"   | —     |
| h115(E)                           | 20  | #5      | 25'-9"  | —     |
| n103(E)                           | 68  | #6      | 5'-4"   | —     |
| s100(E)                           | 12  | #5      | 2'-8"   | —     |
| t101(E)                           | 28  | #6      | 7'-0"   | —     |
| t102(E)                           | 56  | #6      | 8'-0"   | —     |
| t104(E)                           | 8   | #6      | 15'-5"  | —     |
| t105(E)                           | 18  | #6      | 17'-5"  | —     |
| v102(E)                           | 68  | #5      | 11'-10" | —     |
| v107(E)                           | 68  | #5      | 8'-10"  | —     |
| w119(E)                           | 36  | #5      | 21'-9"  | —     |
| w120(E)                           | 18  | #5      | 4'-8"   | —     |
| w121(E)                           | 20  | #5      | 25'-9"  | —     |
| Porous Granular Embankment        |     | Cu. Yd. | 116     |       |
| Structure Excavation              |     | Cu. Yd. | 105     |       |
| Concrete Structures               |     | Cu. Yd. | 66.7    |       |
| Reinforcement Bars, Epoxy Coated  |     | Pound   | 6,660   |       |
| Pipe Underdrain For Structures 6" |     | Foot    | 68      |       |
| Bar Splicers                      |     | Each    | 16      |       |
| Geocomposite Wall Drain           |     | Sq. Yd. | 72      |       |
| Non-Special Waste Disposal        |     | Cu. Yd. | 105.0   |       |



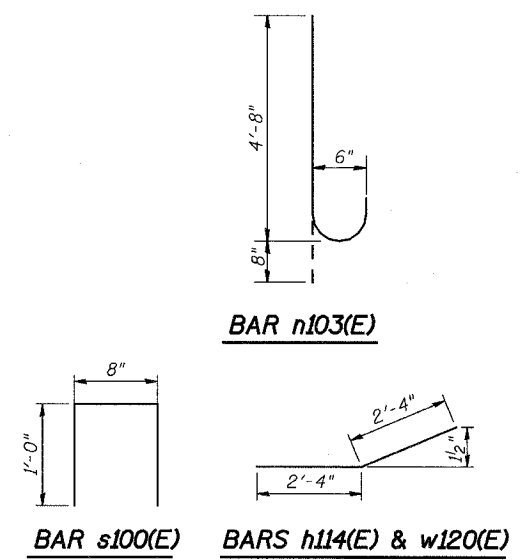
SECTION STA. 96+12.72 TO 96+54.29



SECTION STA. 96+54.29 TO 96+80.35

\* See Miscellaneous Details For Retaining Walls A-M sheet for Pipe Underdrain Detail

- Notes:
1. Work this sheet with Sheet 10.
  2. \*\* Excavation for placing Porous Granular Embankment is included in cost of Braced Excavation & Structure Excavation.
  3. Porous Granular Embankment shall be compacted to 95% Modified Proctor Density and its coarse aggregate gradation shall be CA 18.



3/13/2008 5:50:06 PM  
c:\17049\069\structures\retaining walls\main contract walls under bridges along us 6\11 n96-97 e b.dwg

|          |     |
|----------|-----|
| DESIGNED | MAD |
| CHECKED  | JPB |
| DRAWN    | MDS |
| CHECKED  | DEY |

**URS**  
100 South Wacker Drive,  
Suite 500  
Chicago, IL 60606  
(312) 939-1000

| REVISIONS |      |
|-----------|------|
| NAME      | DATE |
|           |      |
|           |      |
|           |      |
|           |      |
|           |      |
|           |      |
|           |      |
|           |      |
|           |      |

ILLINOIS DEPARTMENT OF TRANSPORTATION  
US RTE 6 FROM I-294 TO IL RTE 1  
**RET. WALL "E" DETAILS**  
STA. 96+12.72 TO 96+80.35  
U.S. 6 MAINLINE RETAINING WALLS  
ALONG 159TH STREET  
SCALE: DATE: 2/21/2008