

3/13/2008 5:50:12 PM

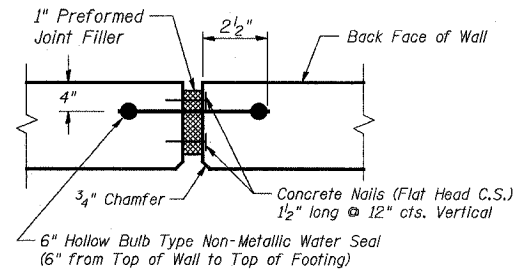
g:\17049.069\structures\retaining walls\main contract\walls under bridges along us 6\22 misc details.dgn

STATE OF ILLINOIS  
DEPARTMENT OF TRANSPORTATION

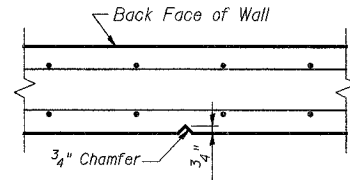
ROUTE NO.	SECTION	COUNTY	TOTAL SHEETS	SHEET NO.
F.A.P. 351	2008-001VB	COOK	579	524
FED. ROAD DIST. NO. 7		ILLINOIS FED. AID PROJECT-		

CONTRACT NO. 60E10

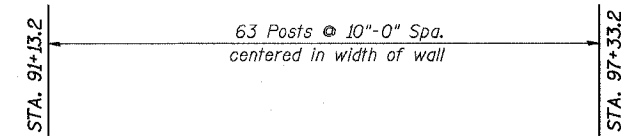
SHEET NO. 22  
24 SHEETS



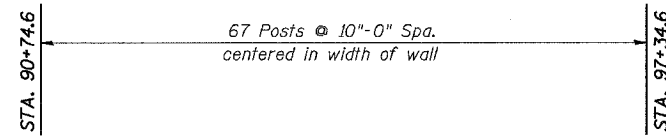
**EXPANSION JOINT DETAIL**  
(Cost included with Concrete Structures)



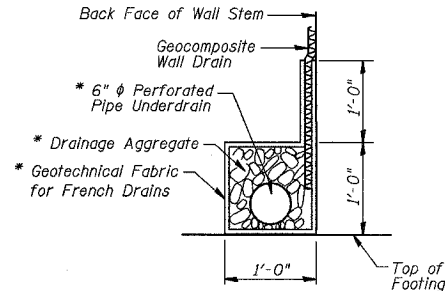
**CONTRACTION JOINT DETAIL**



**NORTH RAILING POST SPACING**



**SOUTH RAILING POST SPACING**



**PIPE UNDERDRAIN DETAIL**

\* Included in the cost of Pipe Underdrains For Structures 6" (See Note 3)

Legend:  
F.F. = Front Face  
B.F. = Back Face  
E.F. = Each Face  
T&B = Top & Bottom

Notes:

- All Railing Posts shall be set vertical.
- Rails shall be parallel to sidewalk profile.
- See Sheet 24 for Pipe Underdrain Layout, quantities and location of required pipe sleeves through concrete.

DESIGNED	MAD
CHECKED	JPB
DRAWN	MAD
CHECKED	DEY

**URS**  
100 South Wacker Drive,  
Suite 500  
Chicago, IL 60606  
(312) 939-1000

REVISIONS	
NAME	DATE

ILLINOIS DEPARTMENT OF TRANSPORTATION  
US RTE 6 FROM I-294 TO IL RTE 1  
**MISCELLANEOUS DETAILS  
FOR RETAINING WALLS A-M**  
U.S. 6 MAINLINE RETAINING WALLS  
ALONG 159TH STREET

SCALE: DATE: 2/21/2008