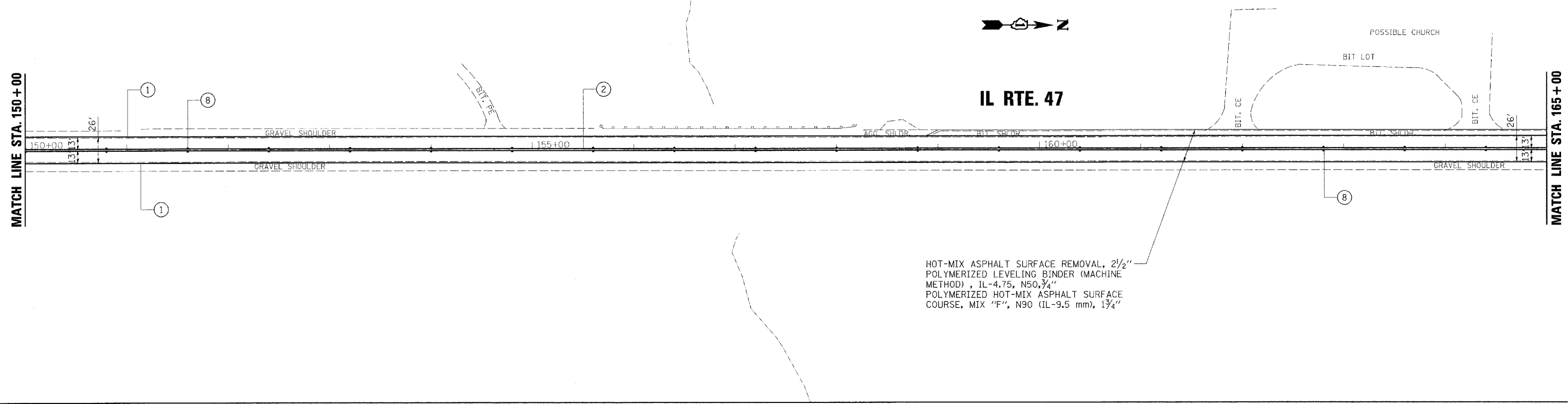
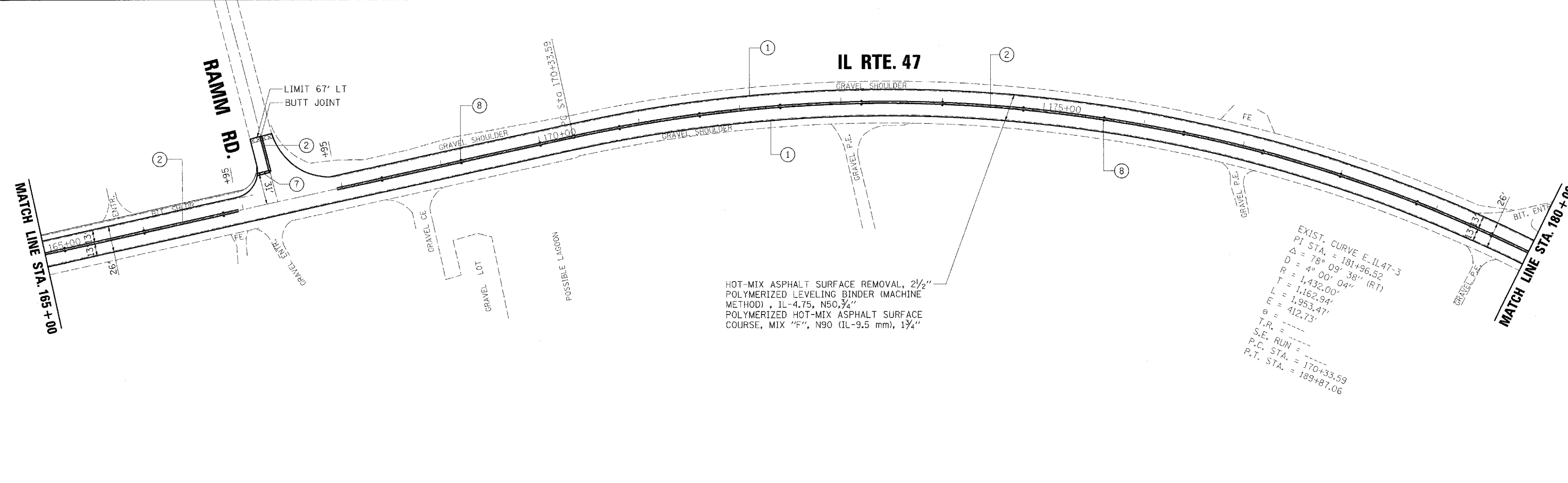


MATCH LINE STA. 150+00

MATCH LINE STA. 165+00



HOT-MIX ASPHALT SURFACE REMOVAL, 2 1/2"
 POLYMERIZED LEVELING BINDER (MACHINE METHOD), IL-4.75, N50, 3/4"
 POLYMERIZED HOT-MIX ASPHALT SURFACE COURSE, MIX "F", N90 (IL-9.5 mm), 1 3/4"



HOT-MIX ASPHALT SURFACE REMOVAL, 2 1/2"
 POLYMERIZED LEVELING BINDER (MACHINE METHOD), IL-4.75, N50, 3/4"
 POLYMERIZED HOT-MIX ASPHALT SURFACE COURSE, MIX "F", N90 (IL-9.5 mm), 1 3/4"

EXIST. CURVE E-IL47-3
 PI STA. = 181+96.52
 $\Delta = 78^\circ 09' 38''$ (RT)
 $D = 4^\circ 00' 04''$
 $T = 1,432.00'$
 $L = 1,162.94'$
 $E = 1,953.47'$
 $e = 412.73'$
 T.R. = -----
 S.E. RUN = -----
 P.C. STA. = 170+33.59
 P.T. STA. = 189+87.06

REFER TO ROADWAY PLAN SHEET 11 OF 11 FOR PAVEMENT MARKING LEGEND

PLOT DATE = 4/18/2008
 FILE NAME = M:\11225584\sheet11\11225584_P11.dgn
 PLOT SCALE = 1"=50'
 PLOT NAME = Default
 MODEL =



200 West Front Street
 Wheaton, IL 60187

DESIGNED - LCM	REVISED -
DRAWN - JMT	REVISED -
CHECKED - BLB	REVISED -
DATE - 3/28/08	REVISED -

STATE OF ILLINOIS
DEPARTMENT OF TRANSPORTATION

IL ROUTE 47	
EXISTING & PROPOSED ROADWAY PLAN	
SCALE: 1"=50'	SHEET NO. 6 OF 11 SHEETS
STA. 150+00 TO STA. 180+00	

F.A.P. RTE. 326	SECTION 106X-RS-6	COUNTY KANE	TOTAL SHEETS 23	SHEET NO. 11
CONTRACT NO. 60E19				
FED. ROAD DIST. NO. 1 ILLINOIS FED. AID PROJECT				