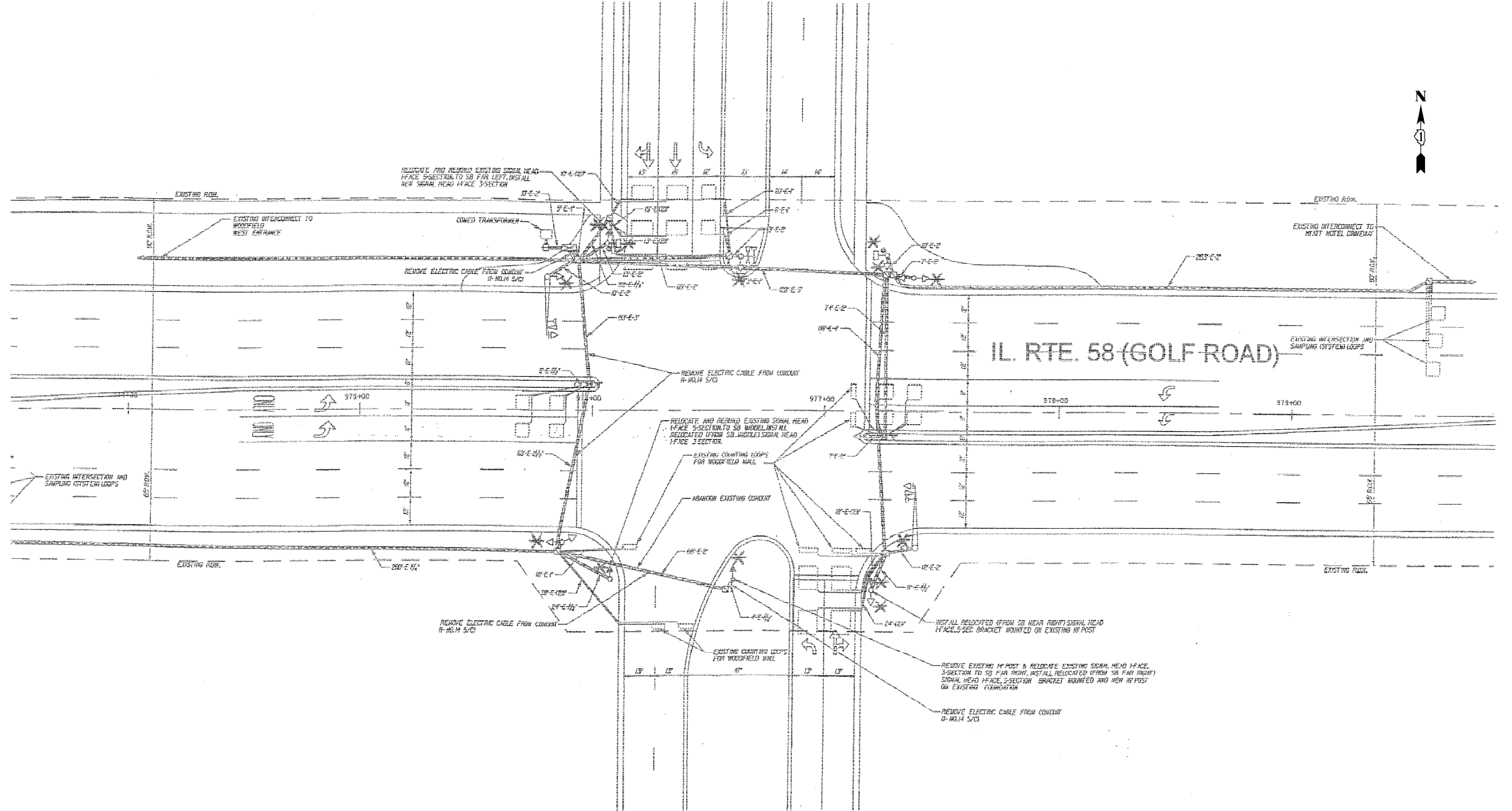


# ROOSEVELT BLVD



# WOODFIELD MALL MIDDLE ENTRANCE

REPLACE ALL DETECTOR LOOPS AS SHOWN  
(WITHIN PROJECT LIMITS)

CODE NO.	QUANTITY	UNIT	ITEM
86600600	1043	FOOT	DETECTOR LOOP REPLACEMENT

FILE NAME: N:\PROJECTS\327\3271\38\Urban\Design\1\1\3271\_38-1\loopa81.dgn

**CC** Ciorba Group, Inc.  
CONSULTING ENGINEERS  
5507 North Cumberland Avenue, Suite 402  
Chicago, Illinois 60656  
Tel. 773.775.4005 Fax 773.775.4014

USER NAME = mbalog	DESIGNED - RD	REVISED -
PLOT SCALE = 1:8200000 * 1/16"	DRAWN - RD	REVISED -
PLOT DATE = 4/5/2008	CHECKED - WBL	REVISED -
	DATE - 04/7/2008	REVISED -

**STATE OF ILLINOIS  
DEPARTMENT OF TRANSPORTATION**

**ILLINOIS ROAD TO I-290  
BASSWOOD ROAD TO I-290  
DETECTOR LOOP REPLACEMENT**

SCALE: N.T.S. SHEET NO. OF SHEETS STA. TO STA.

F.A.P. R.T.E.	SECTION	COUNTY	TOTAL SHEETS	SHEET NO.
559	582 R (1 & 3) RS-1	COOK	27	14
CONTRACT NO. 60E21				
FED. ROAD DIST. NO. - ILLINOIS FED. AID PROJECT				