

F.A.S. RTE.	SECTION	COUNTY	TOTAL SHEETS	SHEET NO.
FAI 80	99-5-1-I-12	WILL	11	1
FED. ROAD DIST. NO.	ILLINOIS CONTRACT NO.		60E34	

STATE OF ILLINOIS
DEPARTMENT OF TRANSPORTATION
DIVISION OF HIGHWAYS

PROPOSED HIGHWAY PLANS

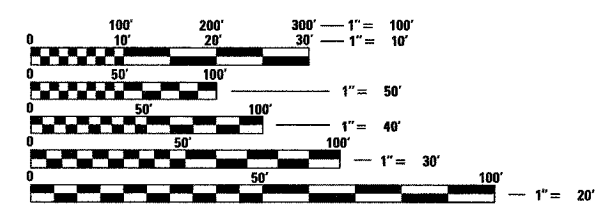
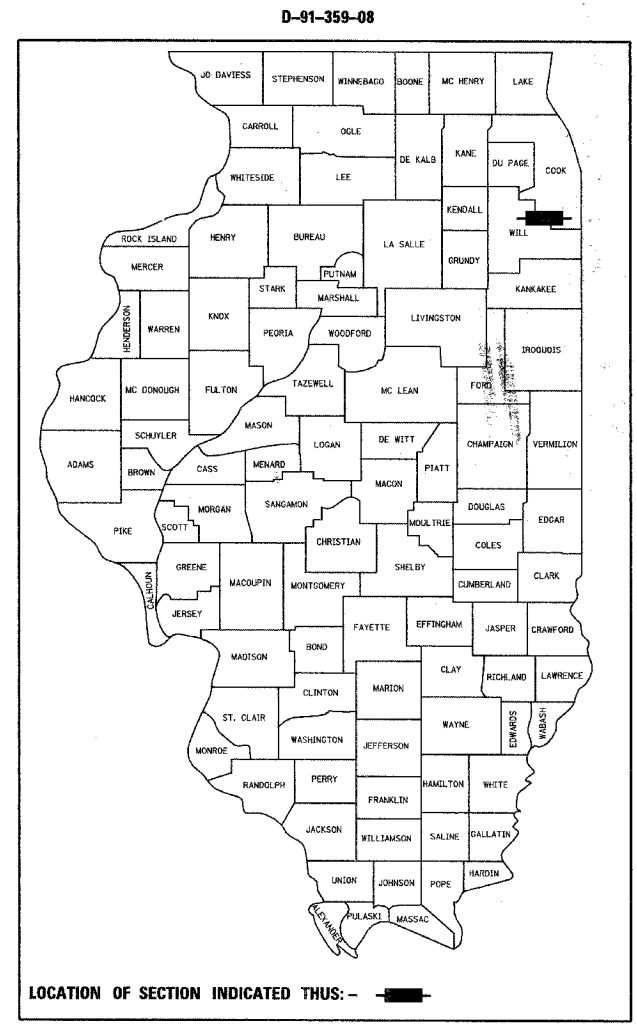
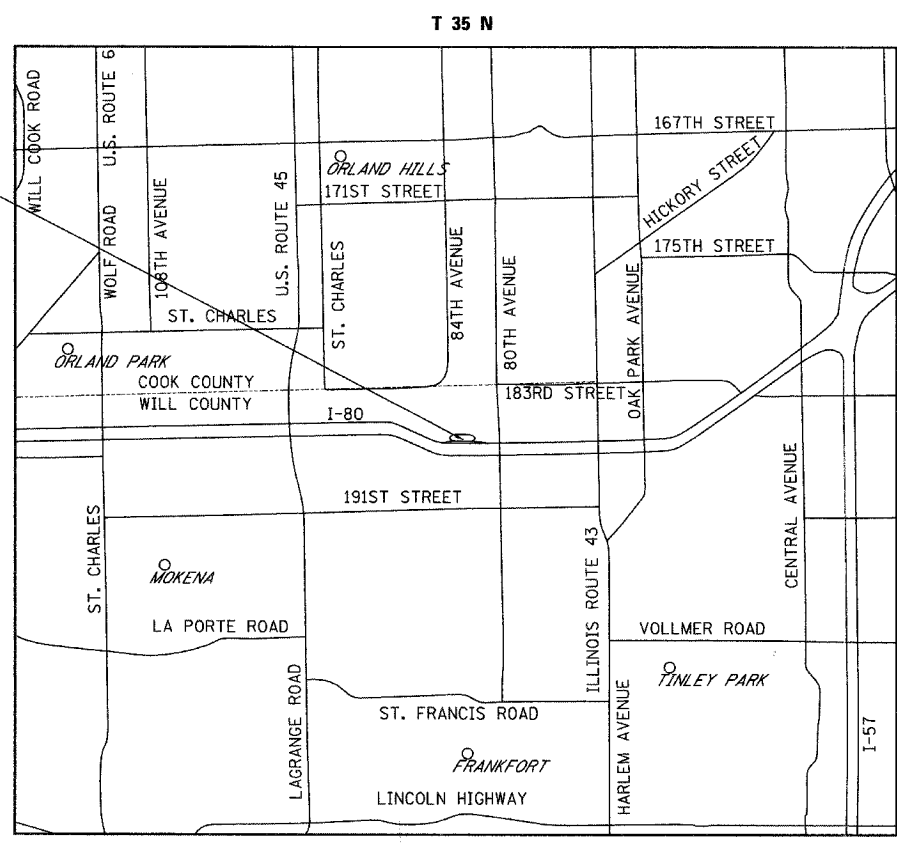
FAI 80 (INTERSTATE 80)
SECTION: 99-5-1-I-12
WESTBOUND FRANKFORT WEIGH STATION
WILL COUNTY
C-91-359-08

FOR INDEX OF SHEETS SEE SHEET NUMBER 2

THIS IMPROVEMENT IS LOCATED
IN FRANKFORT TOWNSHIP

TRAFFIC DATA
2005 ADT - 103,200
POSTED SPEED LIMIT - 65 MPH

IMPROVEMENT LOCATION



FULL SIZE PLANS HAVE BEEN PREPARED USING STANDARD ENGINEERING SCALES. REDUCED SIZED PLANS WILL NOT CONFORM TO STANDARD SCALES. IN MAKING MEASUREMENTS ON REDUCED PLANS, THE ABOVE SCALES MAY BE USED.

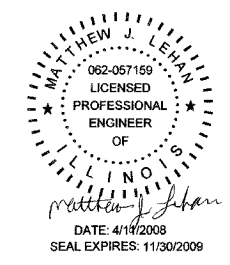
J.U.L.I.E.
JOINT UTILITY LOCATION INFORMATION FOR EXCAVATION
1-800-892-0123
OR 811

Ciorba Group, Inc.

DESIGN FIRM
REGISTRATION NUMBER
184-001016

CONSULTING ENGINEERS
SUITE 402, 5507 NORTH CUMBERLAND AVE
CHICAGO, ILLINOIS 60656 ☎ (773) 775-4009

LOCATION MAP
1" = 5000'



STATE OF ILLINOIS
DEPARTMENT OF TRANSPORTATION
DIVISION OF HIGHWAYS

SUBMITTED APRIL 11, 2008

Diana M. O'Keefe
DEPUTY DIRECTOR OF HIGHWAYS, REGION ENGINEER

May 9, 2008
Eric E. Naranjo
ENGINEER OF DESIGN AND ENVIRONMENT

May 9, 2008
Christine M. Reed
DIRECTOR OF HIGHWAYS, CHIEF ENGINEER

**PRINTED BY THE AUTHORITY
OF THE STATE OF ILLINOIS**

DISTRICT 1 DESIGN PLAN PREPARATION ENGINEER: K. ENG (847) 705-4247

CONTRACT NO. 60E34