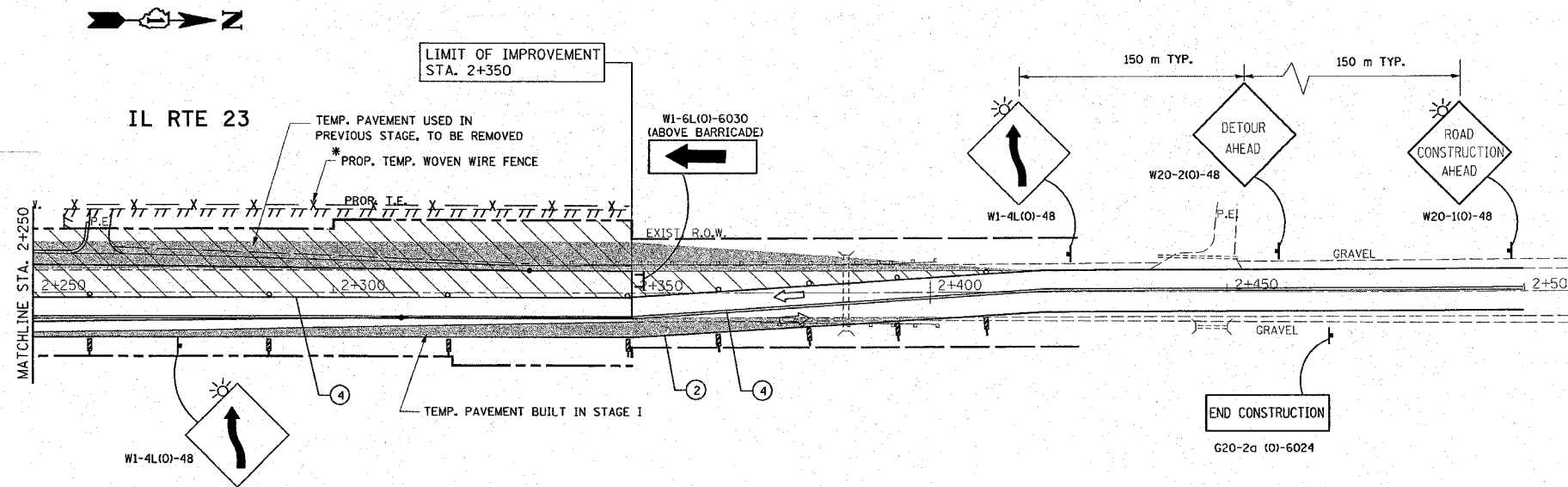


REF-stg03

CONTRACT# 62296

F.A.P. RTE.	SECTION	COUNTY	TOTAL SHEETS	SHEET NO.
324	24N-1	McHENRY	82	19
STA.		TO STA.		
FED. ROAD DIST. NO.	ILLINOIS	FED. AID PROJECT		



\* NOTE:  
TEMP. WOVEN WIRE FENCE WILL BE  
INSTALLED DURING CONSTRUCTION AND  
WILL BE REMOVED AT THE END OF CONSTRUCTION

**LEGEND**

- TEMP. PAVEMENT
- TEMP. CONCRETE BARRIER
- WORK AREA
- TYPE III BARRICADES
- SIGN
- VERTICAL PANEL W/ STEADY BURN LIGHTS
- TYPE II BARRICADES OR DRUMS WITH MONO-DIRECTIONAL STEADY BURNING LIGHTS
- DIRECTION OF TRAFFIC
- ① TEMPORARY PAVEMENT MARKING, DOUBLE YELLOW CENTER LINE 100 mm @ 275 mm C-C
- ② TEMPORARY PAVEMENT MARKING, WHITE SOLID (100 mm) EDGE LINE
- ③ TEMPORARY PAVEMENT MARKING, WHITE SOLID (600 mm) STOP BAR
- ④ PAVEMENT MARKING TAPE, TYPE III, 100 mm

2 OF 3

REVISIONS		ILLINOIS DEPARTMENT OF TRANSPORTATION IL. RTE. 23 @ RIVER RD. SUGGESTED MAINTENANCE OF TRAFFIC PLANS STAGE II
NAME	DATE	
		SCALE: VERT. 1:500 HORIZ.                      DRAWN BY DATE 2/11/2008                      CHECKED BY