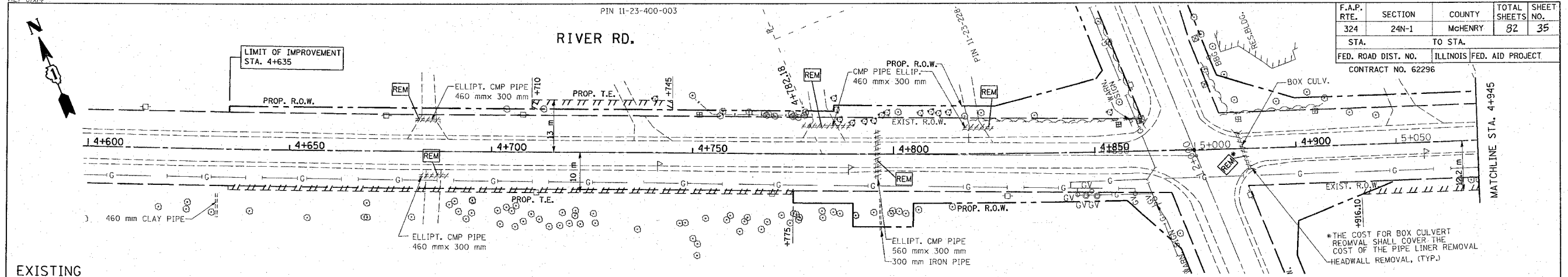


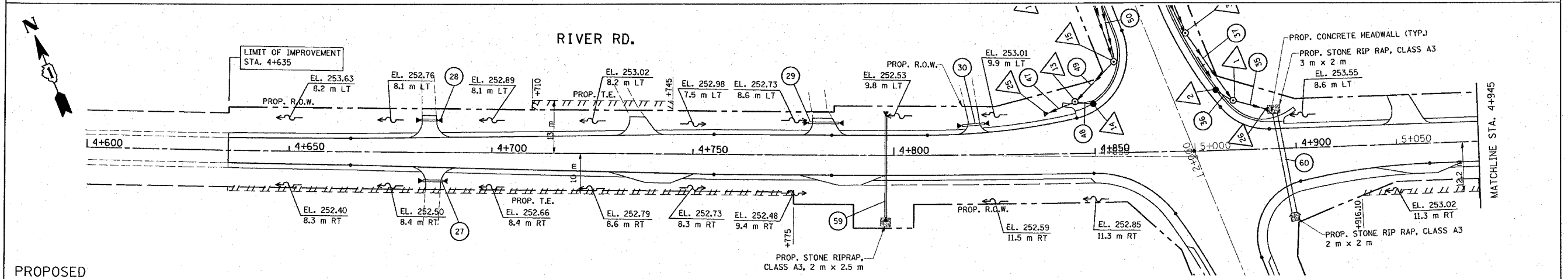
REF: sdr4
REF: pdr4
REF: qdr4
REF: dbr4

PIN 11-23-400-003

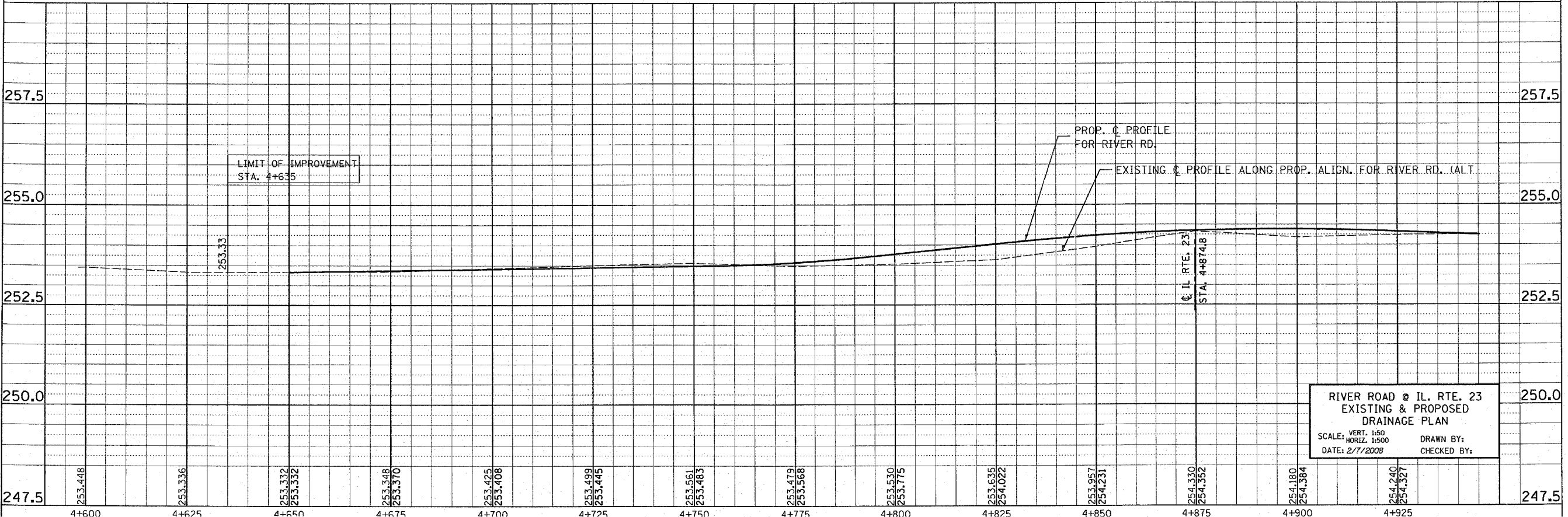
F.A.P. RTE.	SECTION	COUNTY	TOTAL SHEETS	SHEET NO.
324	24N-1	McHENRY	82	35
STA. 4+635		TO STA. 4+945		
FED. ROAD DIST. NO.		ILLINOIS FED. AID PROJECT		
CONTRACT NO. 62296				



EXISTING



PROPOSED



RIVER ROAD @ IL. RTE. 23
EXISTING & PROPOSED
DRAINAGE PLAN
SCALE: VERT. 1:50 HORIZ. 1:500
DATE: 2/7/2008
DRAWN BY:
CHECKED BY: