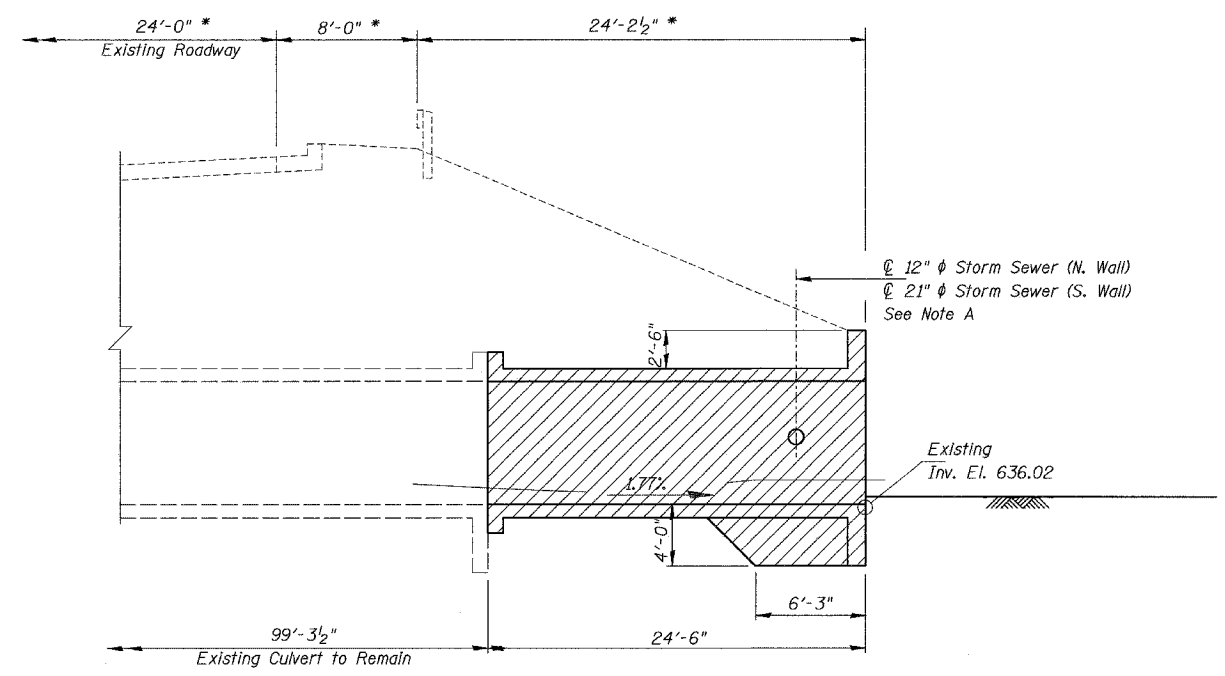


SECTION B-B

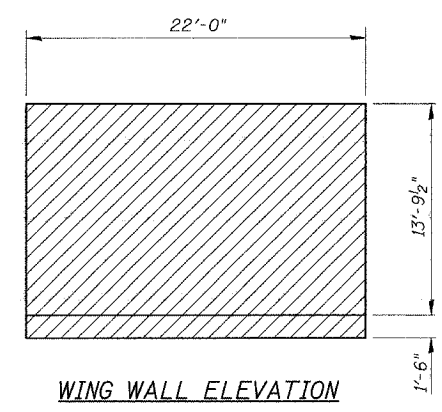
* Dimensions at Right Angles to \perp Roadway



SECTION C-C

* Dimensions at Right Angles to \perp Roadway

Note A:
Existing guardrail and storm sewers shall be removed as required to install temporary soil retention system and to remove and replace culvert sections. After culvert construction is completed, removed guardrail shall be replaced in-kind and removed sections of pipe shall be replaced in-kind and reconnected to existing facilities see Rdwy. Plans. See sheet S4 of S13 for detail at pipe opening in culvert wall.



Legend:

	Denotes Concrete Removal
	Denotes Slopewall Removal

BILL OF MATERIAL

Item	Unit	Total
Concrete Removal	Cu. Yd.	251.3
Slope Wall Removal	Sq. Yd.	238.6

Note:
West End Concrete Removal = 112.5 Cu. Yds.
East End Concrete Removal = 138.8 Cu. Yds.

COLLINS ENGINEERS, INC.
123 N. WACKER DR.
SUITE 300
CHICAGO, IL 60606
(312)704-9300
ILLINOIS PROFESSIONAL DESIGN FIRM
LICENSE NO. 184-000993

REVISIONS	
NAME	DATE

ILLINOIS DEPARTMENT OF TRANSPORTATION
HARLEM AVENUE (IL 43) OVER
TINLEY CREEK
FAP ROUTE 348 SECTION (1214 & 3127-1)RS-1
COOK COUNTY STATION 20+29
STRUCTURE NO. 016-2400
CONCRETE REMOVAL SECTIONS
DRAWN BY: DR
CHECKED BY: PAS/DGS
DATE: JULY, 2003