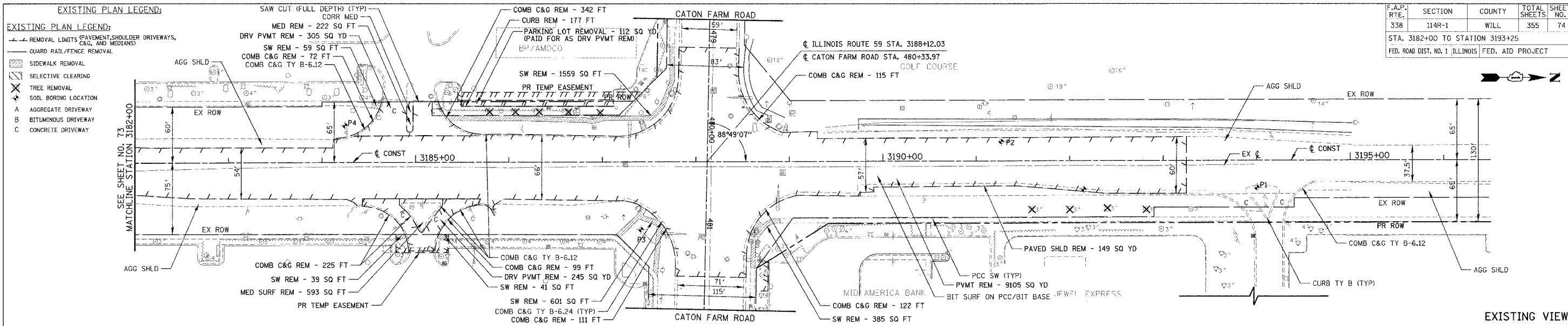
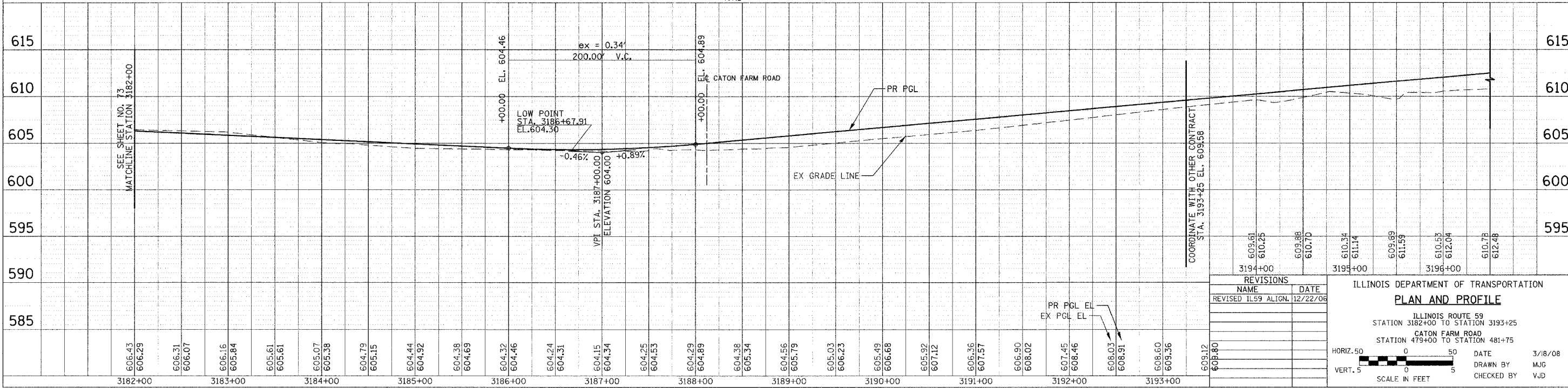
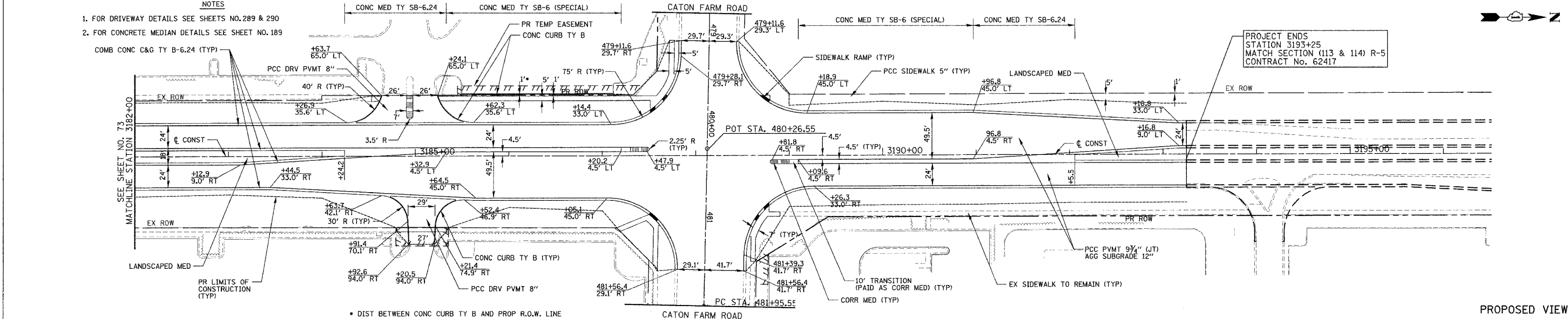


F.A.P. RTE.	SECTION	COUNTY	TOTAL SHEETS	SHEET NO.
338	114R-1	WILL	355	74

STA. 3182+00 TO STATION 3193+25  
FED. ROAD DIST. NO. 1 ILLINOIS FED. AID PROJECT



- NOTES**
- FOR DRIVEWAY DETAILS SEE SHEETS NO. 289 & 290
  - FOR CONCRETE MEDIAN DETAILS SEE SHEET NO. 189



**REVISIONS**

NO.	NAME	DATE
1	REVISED IL59 ALIGN.	12/22/06

ILLINOIS DEPARTMENT OF TRANSPORTATION  
**PLAN AND PROFILE**  
ILLINOIS ROUTE 59  
STATION 3182+00 TO STATION 3193+25  
CATON FARM ROAD  
STATION 479+00 TO STATION 481+75

DATE: 3/8/08  
DRAWN BY: MJG  
CHECKED BY: VJD

HORIZ. 50  
VERT. 5  
SCALE IN FEET

DATE	
BY	
PROJECT NO.	
DATE	
BY	
PROJECT NO.	
DATE	
BY	
PROJECT NO.	

DATE	
BY	
PROJECT NO.	
DATE	
BY	
PROJECT NO.	
DATE	
BY	
PROJECT NO.	