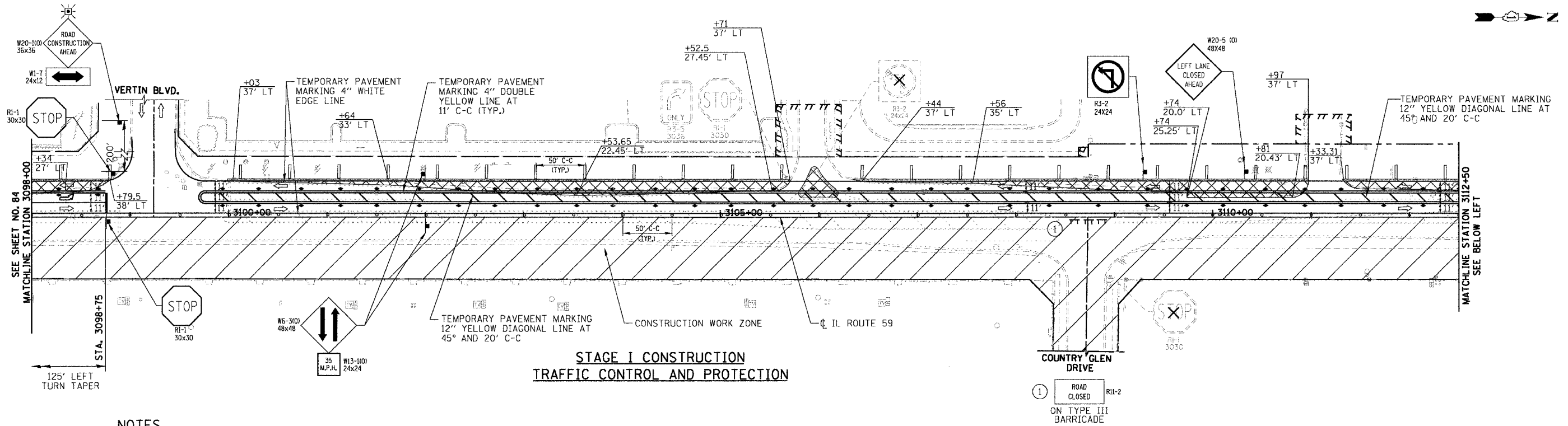
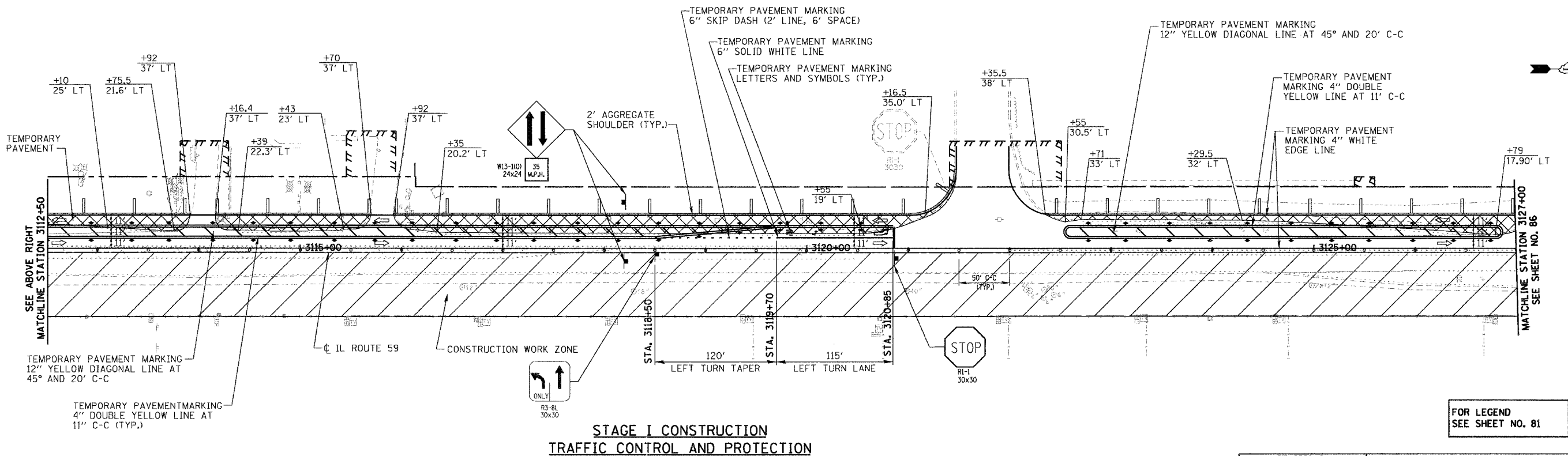


RTE	SECTION	COUNTY	TOTAL SHEETS	SHEET NO.
338	114R-1	WILL	355	85
STA. 3098+00		TO STA. 3127+00		
FED. ROAD DIST. NO. 7		ILLINOIS FED. AID PROJECT		



NOTES

1. FOR THE INTERSECTION CONSTRUCTION PROCEDURE AND MAINTENANCE OF TRAFFIC STAGING OF IL-59 AND VERTIN BLVD. SEE SUB STAGING SHEETS.



FOR LEGEND
SEE SHEET NO. 81

PLAN	SURVEYED	DATE
	PLOTTED	
	CHECKED	
	BY	
	NO. OF WAY CHECKED	
	NO. OF FILE NAME	

PROFILE	SURVEYED	DATE
	PLOTTED	
	CHECKED	
	BY	
	NO. OF WAY CHECKED	
	NO. OF FILE NAME	

REVISIONS	
NAME	DATE

ILLINOIS DEPARTMENT OF TRANSPORTATION
**SUGGESTED CONSTRUCTION PROCEDURE
AND MAINTENANCE OF TRAFFIC STAGE I**
ILLINOIS ROUTE 59
STATION 3098+00 TO STATION 3127+00

DATE: 3/18/08
DRAWN BY: NM, RM
CHECKED BY: AS

SCALE IN FEET