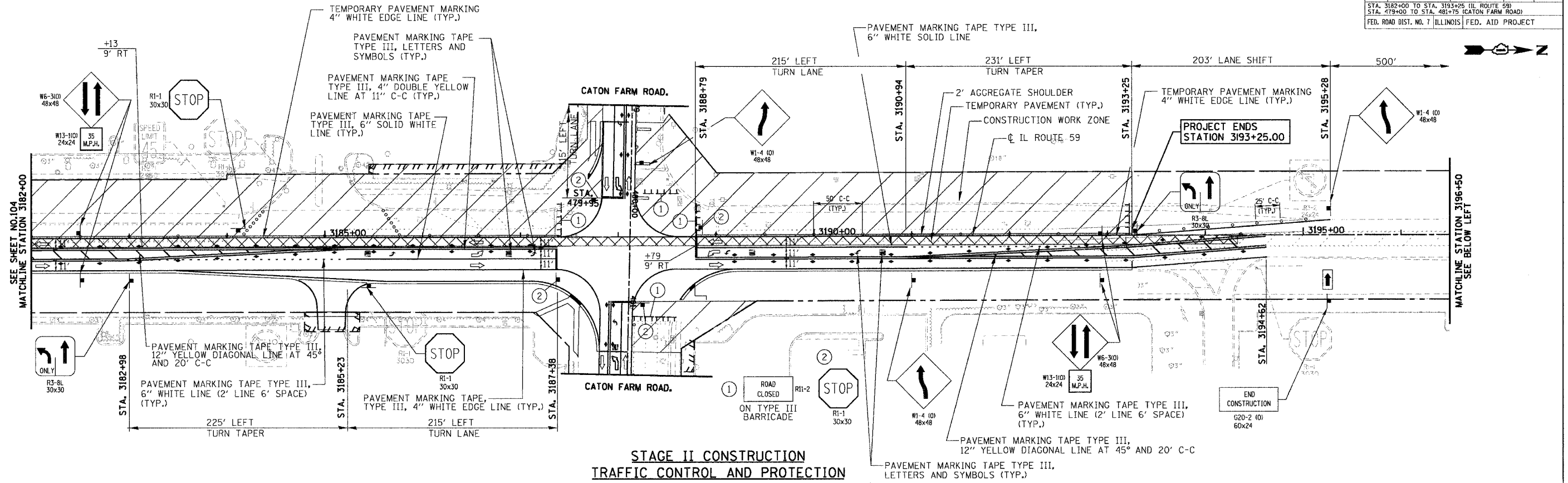


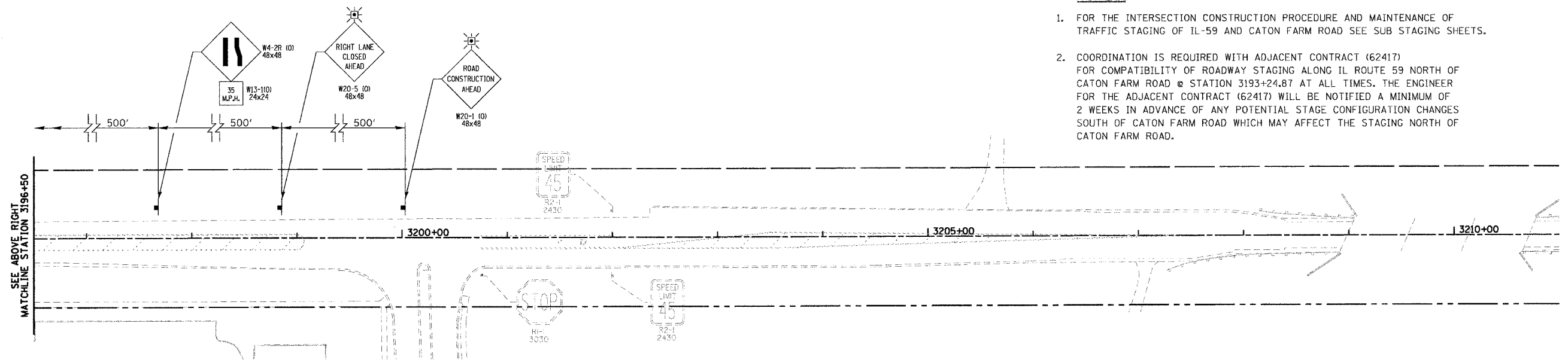
RTE	SECTION	COUNTY	TOTAL SHEETS	SHEET NO.
338	114R-1	WILL	355	105
STA. 3182+00 TO STA. 3193+25 (IL ROUTE 59)				
STA. 479+00 TO STA. 481+75 (CATON FARM ROAD)				
FED. ROAD DIST. NO. 7 ILLINOIS FED. AID PROJECT				



**STAGE II CONSTRUCTION
TRAFFIC CONTROL AND PROTECTION**

NOTES:

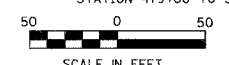
- FOR THE INTERSECTION CONSTRUCTION PROCEDURE AND MAINTENANCE OF TRAFFIC STAGING OF IL-59 AND CATON FARM ROAD SEE SUB STAGING SHEETS.
- COORDINATION IS REQUIRED WITH ADJACENT CONTRACT (62417) FOR COMPATIBILITY OF ROADWAY STAGING ALONG IL ROUTE 59 NORTH OF CATON FARM ROAD @ STATION 3193+24.87 AT ALL TIMES. THE ENGINEER FOR THE ADJACENT CONTRACT (62417) WILL BE NOTIFIED A MINIMUM OF 2 WEEKS IN ADVANCE OF ANY POTENTIAL STAGE CONFIGURATION CHANGES SOUTH OF CATON FARM ROAD WHICH MAY AFFECT THE STAGING NORTH OF CATON FARM ROAD.



**STAGE II CONSTRUCTION
TRAFFIC CONTROL AND PROTECTION**

FOR LEGEND
SEE SHEET NO. 81

REVISIONS		ILLINOIS DEPARTMENT OF TRANSPORTATION SUGGESTED CONSTRUCTION PROCEDURE AND MAINTENANCE OF TRAFFIC STAGE II	
NAME	DATE		
		ILLINOIS ROUTE 59 STATION 3182+00 TO STATION 3193+25 CATON FARM ROAD STATION 479+00 TO STATION 481+75	
		DATE	3/18/08
		DRAWN BY:	NM, RM
		CHECKED BY:	AS



PLAN	SURVEYED	DATE

PROFILE	SURVEYED	DATE