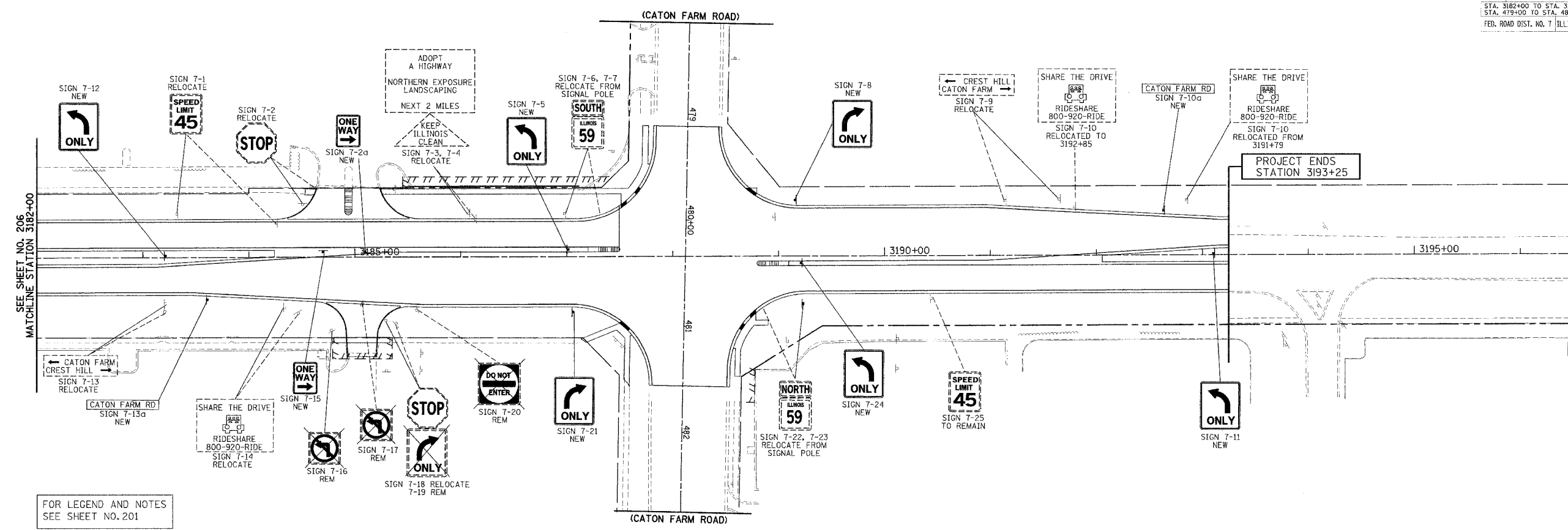


RTE	SECTION	COUNTY	TOTAL SHEETS	SHEET NO.
338	114R-1	WILL	355	207
STA. 3182+00 TO STA. 3193+00 (IL. ROUTE 59) STA. 479+00 TO STA. 481+75 (CATON FARM ROAD) FED. ROAD DIST. NO. 7 ILLINOIS FED. AID PROJECT				



DATE	BY

DATE	BY

REVISIONS	
NAME	DATE

ILLINOIS DEPARTMENT OF TRANSPORTATION
SIGNING PLAN
 ILLINOIS ROUTE 59
 STATION 3182+00 TO STATION 3193+00
 CATON FARM ROAD
 STATION 479+00 TO STATION 481+75

DATE 3/18/08
 DRAWN BY KB
 CHECKED BY VJD

50 0 50
 SCALE IN FEET