

F.A.P. RTE.	SECTION	COUNTY	TOTAL SHEETS	SHEET NO.
338	114R-1	WILL	355	234
STA.	TO STA.			
FED. ROAD DIST. NO. 1	ILLINOIS	FED. AID PROJECT		

SCHEDULE OF QUANTITIES

ITEM	UNIT	QUANTITY
SIGN PANEL - TYPE 1	SQ FT	23
CONDUIT IN TRENCH, 2" DIA., GALVANIZED STEEL	FOOT	526
CONDUIT IN TRENCH, 2 1/2" DIA., GALVANIZED STEEL	FOOT	150
CONDUIT IN TRENCH, 4" DIA., GALVANIZED STEEL	FOOT	39
CONDUIT PUSHED, 2" DIA., GALVANIZED STEEL	FOOT	17
CONDUIT PUSHED, 2 1/2" DIA., GALVANIZED STEEL	FOOT	34
CONDUIT PUSHED, 4" DIA., GALVANIZED STEEL	FOOT	185
HANDHOLE	EACH	4
HEAVY-DUTY HANDHOLE	EACH	2
DOUBLE HANDHOLE	EACH	1
TRENCH AND BACKFILL FOR ELECTRICAL WORK	FOOT	715
FULL-ACTUATED CONTROLLER AND TYPE IV CABINET, SPECIAL TRANSCEIVER - FIBER OPTIC	EACH	1
ELECTRIC CABLE IN TRENCH, SIGNAL, NO. 14 2C	FOOT	682
ELECTRIC CABLE IN CONDUIT, SIGNAL NO. 14 3C	FOOT	1,142
ELECTRIC CABLE IN CONDUIT, SIGNAL NO. 14 5C	FOOT	1,440
ELECTRIC CABLE IN CONDUIT, SIGNAL NO. 14 7C	FOOT	767
ELECTRIC CABLE IN CONDUIT, LEAD-IN, NO. 14 1 PAIR	FOOT	1,817
ELECTRIC CABLE IN CONDUIT, SERVICE, NO. 6 2 C	FOOT	45
TRAFFIC SIGNAL POST, GALVANIZED STEEL 14 FT.	EACH	1
STEEL MAST ARM ASSEMBLY AND POLE, 14 FT.	EACH	1
STEEL MAST ARM ASSEMBLY AND POLE, 28 FT.	EACH	1
STEEL MAST ARM ASSEMBLY AND POLE, 40 FT.	EACH	1
STEEL MAST ARM ASSEMBLY AND POLE, 44 FT.	EACH	1
CONCRETE FOUNDATION, TYPE A	FOOT	4
CONCRETE FOUNDATION, TYPE C	FOOT	4
CONCRETE FOUNDATION, TYPE E 30-INCH DIAMETER	FOOT	20
CONCRETE FOUNDATION, TYPE E 36-INCH DIAMETER	FOOT	26
SIGNAL HEAD, LED, 1-FACE, 3-SECTION, MAST-ARM MOUNTED	EACH	4
SIGNAL HEAD, LED, 1-FACE, 3-SECTION, BRACKET MOUNTED	EACH	2
SIGNAL HEAD, LED, 1-FACE, 5-SECTION, MAST-ARM MOUNTED	EACH	4
SIGNAL HEAD, LED, 2-FACE, 3-SECTION, BRACKET MOUNTED	EACH	1
PEDESTRIAN SIGNAL HEAD, LED, 1-FACE, BRACKET MOUNTED	EACH	2
PEDESTRIAN SIGNAL HEAD, LED, 2-FACE, BRACKET MOUNTED	EACH	2
TRAFFIC SIGNAL BACKPLATE, LOUVERED, ALUMINUM	EACH	8
* INDUCTIVE LOOP DETECTOR	EACH	7
* LIGHT DETECTOR	EACH	2
LIGHT DETECTOR AMPLIFIER	EACH	1
PEDESTRIAN PUSH-BUTTON	EACH	5
TEMPORARY TRAFFIC SIGNAL INSTALLATION	EACH	1
REMOVE EXISTING TRAFFIC SIGNAL EQUIPMENT	EACH	1
REMOVE EXISTING HANDHOLE	EACH	2
PREFORMED DETECTOR LOOP	FOOT	547
** PAINT NEW TRAFFIC SIGNAL POST	EACH	1
** PAINT NEW MAST ARM POLE, UNDER 40 FEET	EACH	2
** PAINT NEW MAST ARM POLE, 40 FEET AND OVER	EACH	2
TEMPORARY TRAFFIC SIGNAL TIMING	EACH	1
SERVICE INSTALLATION - POLE MOUNTED	EACH	1
ELECTRIC CABLE IN CONDUIT, GROUNDING, NO. 6 1C	FOOT	562
* ELECTRIC CABLE IN CONDUIT NO. 20 3/C, TWISTED, SHIELDED	FOOT	297
UNINTERRUPTIBLE POWER SUPPLY	EACH	1

* 100% OF THE COST FOR EMERGENCY VEHICLE PREEMPTION ITEMS WILL BE PAID FOR BY VILLAGE OF SHOREWOOD.
 ** 100% OF THE COST WILL BE PAID BY VILLAGE OF SHOREWOOD.

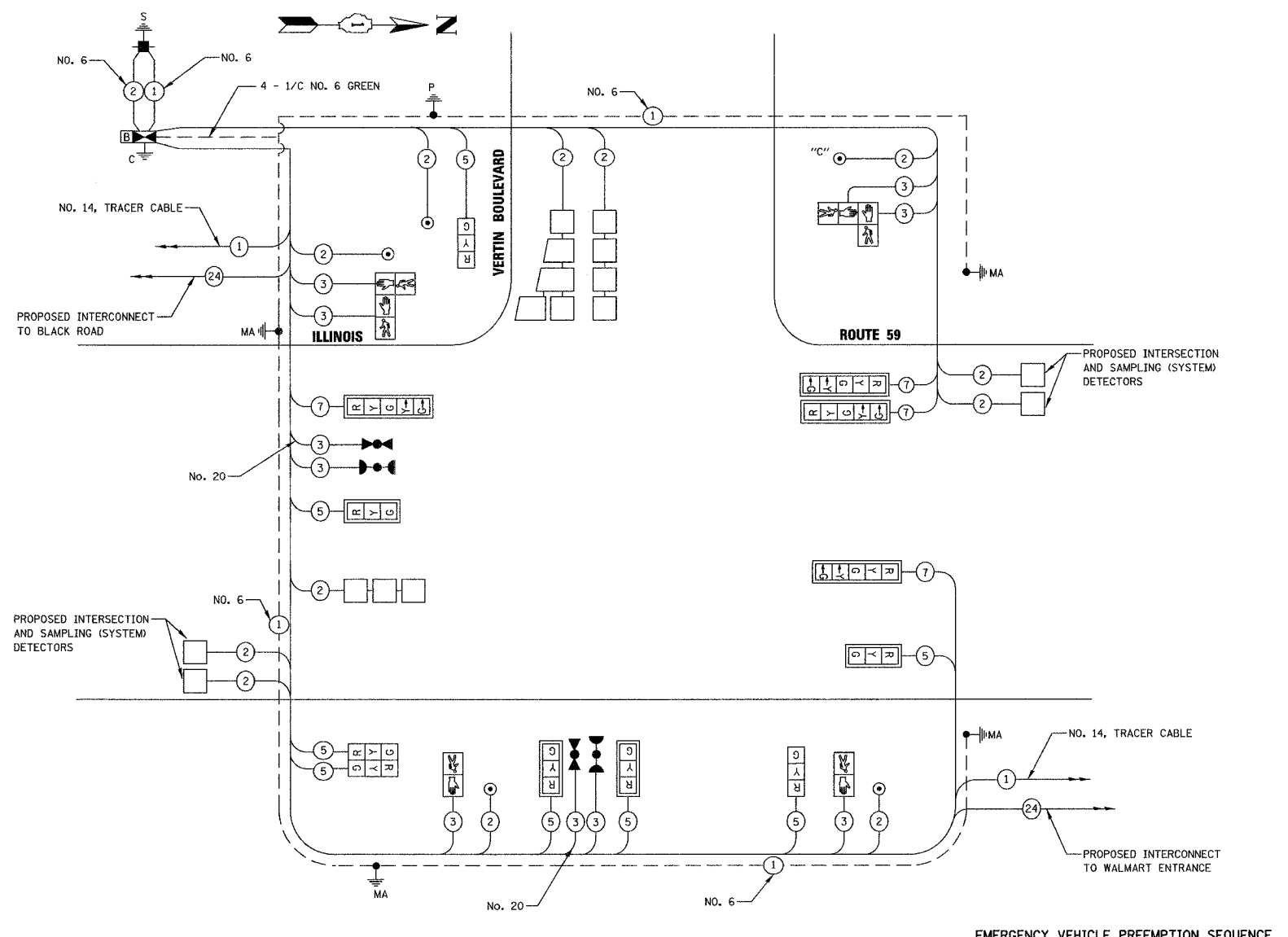
NOTE: ALL LOOP DETECTION SHOWN ON THIS PLAN WILL BE "PREFORMED" DETECTION LOOPS.

THE TRAFFIC SIGNAL CONTROL EQUIPMENT FOR THIS SIGNAL SHALL BE "ECONOLITE" TO MATCH THE EXISTING ADJACENT SYSTEM.

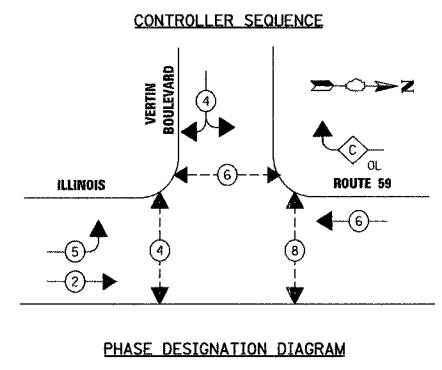
TYPE	NO. LAMPS	WATTAGE INCAND	LED % OPERATION	TOTAL WATTAGE
SIGNAL (RED)	12	135	17	102
(YELLOW)	12	135	25	75
(GREEN)	12	135	15	45
ARROW	8	135	12	9.6
PED. SIGNAL	6	90	25	150
CONTROLLER	1	100	100	100
ILLUM. SIGN		84	64	0.50
FLASHER				
TOTAL =				481.6

ILLINOIS DEPARTMENT OF TRANSPORTATION
 DIVISION OF HIGHWAY/DISTRICT 1
 201 WEST CENTER COURT/SCHAUMBURG, ILLINOIS 60196-1096
 ENERGY SUPPLY CONTACT: JUDY MILLER
 PHONE: 815-724-5717
 COMPANY: COMMONWEALTH EDISON

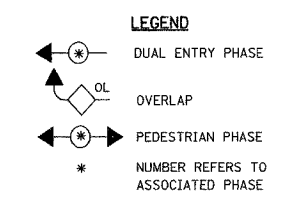
FOUNDATION (DEPTH)	FT. (m)	CABLE SLACK	FT. (m)	VERTICAL	FT. (m)
TYPE A - POST	4 (1.2)	HANDHOLE	6.5 (2.0)	ALL FOUNDATIONS	3.5 (1.0)
C & D - CONTROLLER	4 (1.2)	DOUBLE HANDHOLE	13 (4.0)	MAST ARM (L) POLE	20'+L-2'
E - M. ARM POLE		SIGNAL POST	2 (1.0)		(6m+L-0.6m)=
30" (750mm)	13.5 (4.1)	CONTROLLER CAB.	1 (0.5)	BRACKET MOUNTED	13 (4.0)
36" (900mm)	15 (4.6)	FIBER OPTIC	13 (4.0)	PED. PUSHBUTTON	4 (1.2)
		ELECTRIC SERVICE	1 (0.5)	ELECTRIC SERVICE	13.5 (4.1)
		GROUND CABLE	1 (0.5)	SERVICE TO GROUND	13.5 (4.1)
				POST MOUNTED	6 (1.8)



CABLE PLAN

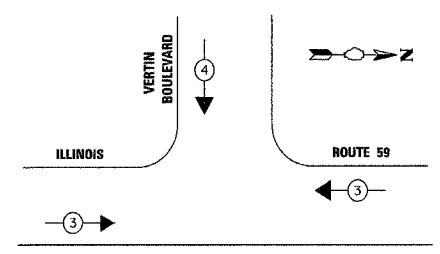


PHASE DESIGNATION DIAGRAM



NOTE: PUSH BUTTON "C" SHALL PLACE A CALL TO PHASES 6 AND 8

EMERGENCY VEHICLE PREEMPTION SEQUENCE



PROPOSED EMERGENCY VEHICLE PREEMPTORS		
EMERGENCY VEHICLE PREEMPTOR	3	4
MOVEMENT	←	↓

CABLE PLAN LEGEND

EXISTING	PROPOSED	DESCRIPTION
(C)	(G)	8" (200mm) TRAFFIC SIGNAL SECTION
(R)	(R)	12" (300mm) TRAFFIC SIGNAL SECTION
(W)	(W)	12" (300mm) PEDESTRIAN SIGNAL SECTION
(H)	(H)	12" (300mm) PEDESTRIAN SIGNAL SECTION
(C)	(C)	CONTROLLER CABINET
(S)	(S)	SERVICE INSTALLATION
(T)	(T)	TELEPHONE CONNECTION
(V)	(V)	VEHICLE DETECTOR, INDUCTION LOOP
(M)	(M)	MAGNETIC DETECTOR
(E)	(E)	EMERGENCY VEHICLE LIGHT DETECTOR
(C)	(C)	CONFIRMATION BEACON
(P)	(P)	PUSHBUTTON DETECTOR
(2)	(2)	DENOTES NUMBER OF CONDUCTORS
(1)	(1)	ALL CABLE NO. 14 EXCEPT AS INDICATED
(24)	(24)	ALL LOOP DETECTOR CABLE TO BE SHIELDED
(1)	(1)	GROUND CABLE IN CONDUIT
(24)	(24)	NO. 6 SOLID COPPER (GREEN)
(24)	(24)	FIBER OPTIC CABLE IN CONDUIT
(24)	(24)	NO. 62.5/125 2-MM12F & SM12F
(E)	(E)	RAILROAD CONTROL CABINET
(L)	(L)	ILLUMINATED SIGN "NO LEFT TURN"
(R)	(R)	ILLUMINATED SIGN "NO RIGHT TURN"
(R)	(R)	SIGNAL FACE WITH BACKPLATE
(P)	(P)	"P" INDICATES PROGRAMMED HEAD
(H)	(H)	GROUND ROD AT HANDHOLE (H), DOUBLE HANDHOLE (H), OR CONTROLLER (C)
(P)	(P)	GROUND ROD AT POST (P) OR MAST ARM POLE (MA)
(S)	(S)	GROUND ROD AT ELECTRIC SERVICE INSTALLATION
(B)	(B)	UNINTERRUPTIBLE POWER SUPPLY (UPS)

REVISIONS	
NAME	DATE
REVISED IL59 ALIGN.	12/22/08

ILLINOIS DEPARTMENT OF TRANSPORTATION
CABLE PLAN, PHASE DESIGNATION DIAGRAM, AND SCHEDULE OF QUANTITIES
 ILLINOIS ROUTE 59 AT VERTIN BOULEVARD
 SCALE: NONE
 DATE 3/18/08
 DRAWN BY BAR
 DESIGNED BY FA
 CHECKED BY KMM