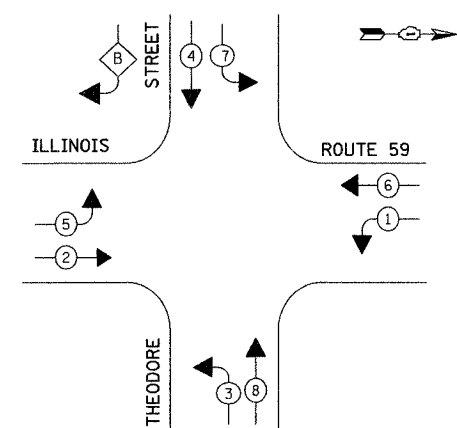


TEMPORARY CONTROLLER SEQUENCE

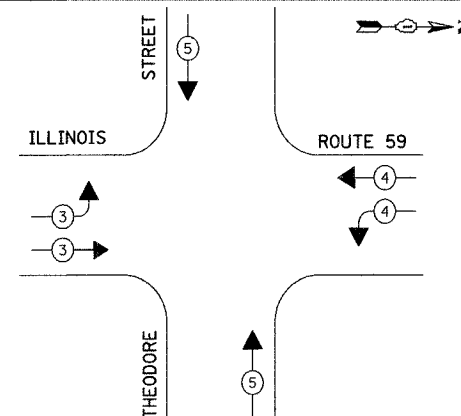


LEGEND

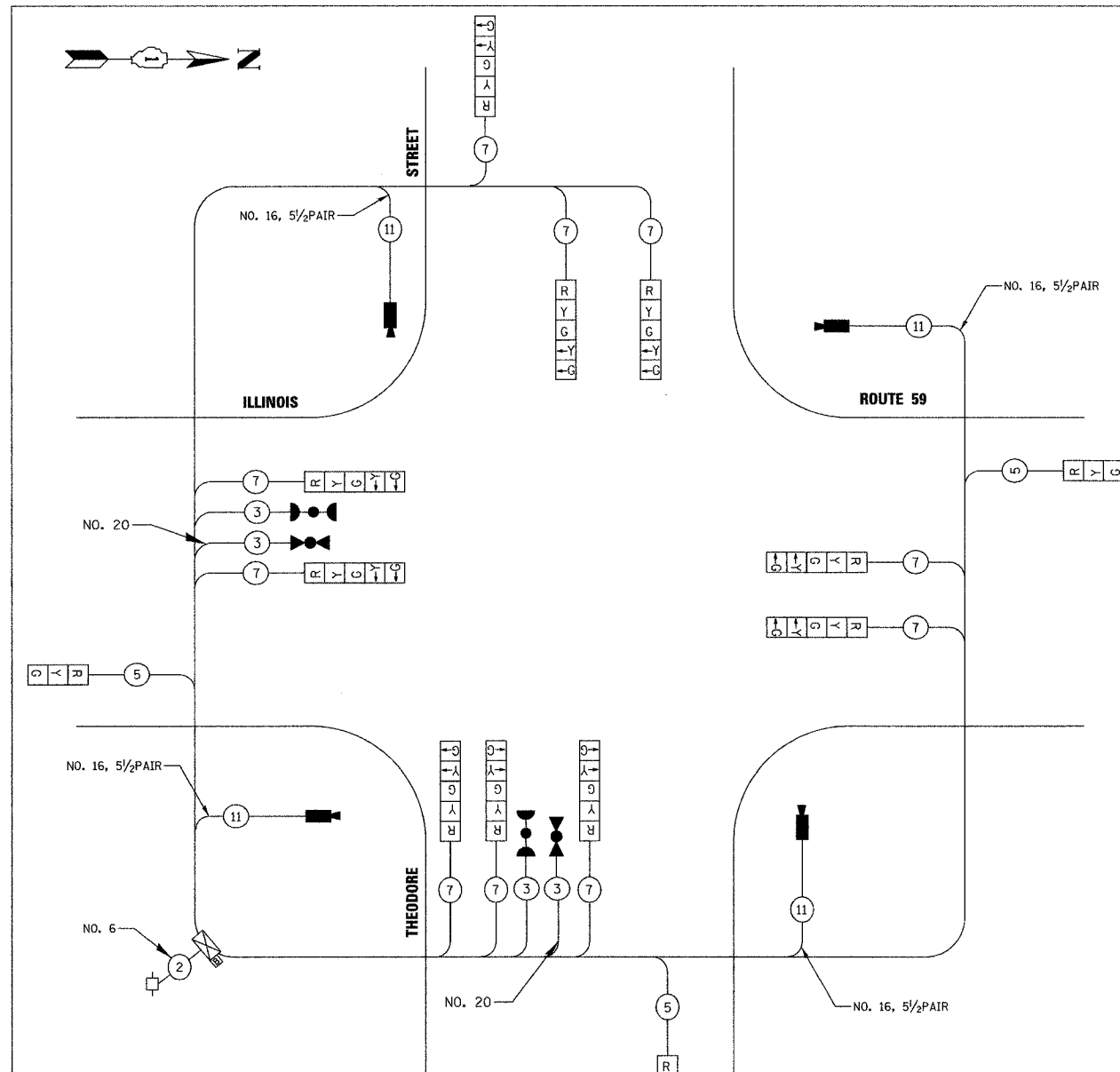
- DUAL ENTRY PHASE
- OVERLAP
- * NUMBER REFERS TO ASSOCIATED PHASE

TEMPORARY PHASE DESIGNATION DIAGRAM

EMERGENCY VEHICLE PREEMPTION SEQUENCE



| PROPOSED EMERGENCY VEHICLE PREEMPTORS | | | |
|---------------------------------------|---|---|---|
| EMERGENCY VEHICLE PREEMPTOR | 3 | 4 | 5 |
| MOVEMENT | | | |



TEMPORARY CABLE PLAN
NOT TO SCALE

NOTE:

1. AN APPROVED IDOT SUBCONTRACTOR MUST INSTALL AND ADJUST VIDEO VEHICLE DETECTION SYSTEM AS REQUIRED BY STAGE/ PHASE CHANGES. ADJUSTMENT WILL BE REQUIRED BETWEEN PRIMARY AND SECONDARY.
2. RIGHT-TURN OVERLAP ARROW SECTIONS SHALL BE BAGGED UNTIL RIGHT TURN LANES ARE OPEN TO TRAFFIC.

TEMPORARY CABLE DIAGRAM LEGEND

- TEMPORARY TRAFFIC SIGNAL SECTION OR PEDESTRIAN SIGNAL SECTION, 12" (300mm)
- TEMPORARY CONTROLLER CABINET
- TEMPORARY SERVICE INSTALLATION
- INDICATES NUMBER OF CONDUCTORS IN CABLE. ALL CONDUCTORS TO BE NUMBER 14 AWG WIRE UNLESS OTHERWISE NOTED.
- EMERGENCY VEHICLE LIGHT DETECTOR
- CONFIRMATION BEACON
- VIDEO DETECTION CAMERA
- COAXIAL CABLE
- TEMPORARY RADIO INTERCONNECT ANTENNA
- UNINTERRUPTED POWER SUPPLY (UPS)

| TYPE | NO. LAMPS | WATTAGE INCAND | LED X % OPERATION | TOTAL WATTAGE |
|------------------|-----------|----------------|-------------------|---------------|
| SIGNAL (RED) | 13 | 17 | 0.50 | 111 |
| (YELLOW) | 13 | 25 | 0.25 | 81 |
| (GREEN) | 13 | 15 | 0.25 | 49 |
| ARROW | 20 | 12 | 0.10 | 24 |
| PED. SIGNAL | 25 | 25 | 1.00 | |
| CONTROLLER | 1 | 100 | 1.00 | 100 |
| ILLUM. SIGN | 64 | 64 | 0.05 | |
| UPS | 1 | 25 | 1.00 | 25 |
| FLASHER | | | 0.50 | |
| ENERGY COSTS TO: | | | TOTAL = | 390 |

CITY OF JOLIET
921 E. WASHINGTON STREET
JOLIET, IL 60432
ENERGY SUPPLY CONTACT: BETTY BURLS
PHONE: 815-724-5052
COMPANY: COMMONWEALTH EDISON

THE TRAFFIC SIGNAL CONTROL EQUIPMENT FOR THIS TEMPORARY SIGNAL SHALL BE "ECONOLITE" TO MATCH THE EXISTING ADJACENT SYSTEM.

| REVISIONS | |
|---------------------|----------|
| NAME | DATE |
| REVISED IL59 ALIGN. | 12/22/06 |
| | |
| | |
| | |
| | |
| | |
| | |
| | |

ILLINOIS DEPARTMENT OF TRANSPORTATION
TEMPORARY TRAFFIC SIGNAL CABLE PLAN, AND PHASE DESIGNATION DIAGRAM
ILLINOIS ROUTE 59 AT THEODORE STREET
SCALE: NONE
DATE 3/18/08
DRAWN BY BAR
DESIGNED BY FA
CHECKED BY KMM

| | |
|-----------|------|
| PLAN | DATE |
| SUBMITTED | BY |
| PLOTTED | |
| NOTE BOOK | |
| NO. _____ | |
| NO. _____ | |
| NO. _____ | |

| | |
|-----------|------|
| PHOTO | DATE |
| NO. _____ | |
| NO. _____ | |
| NO. _____ | |