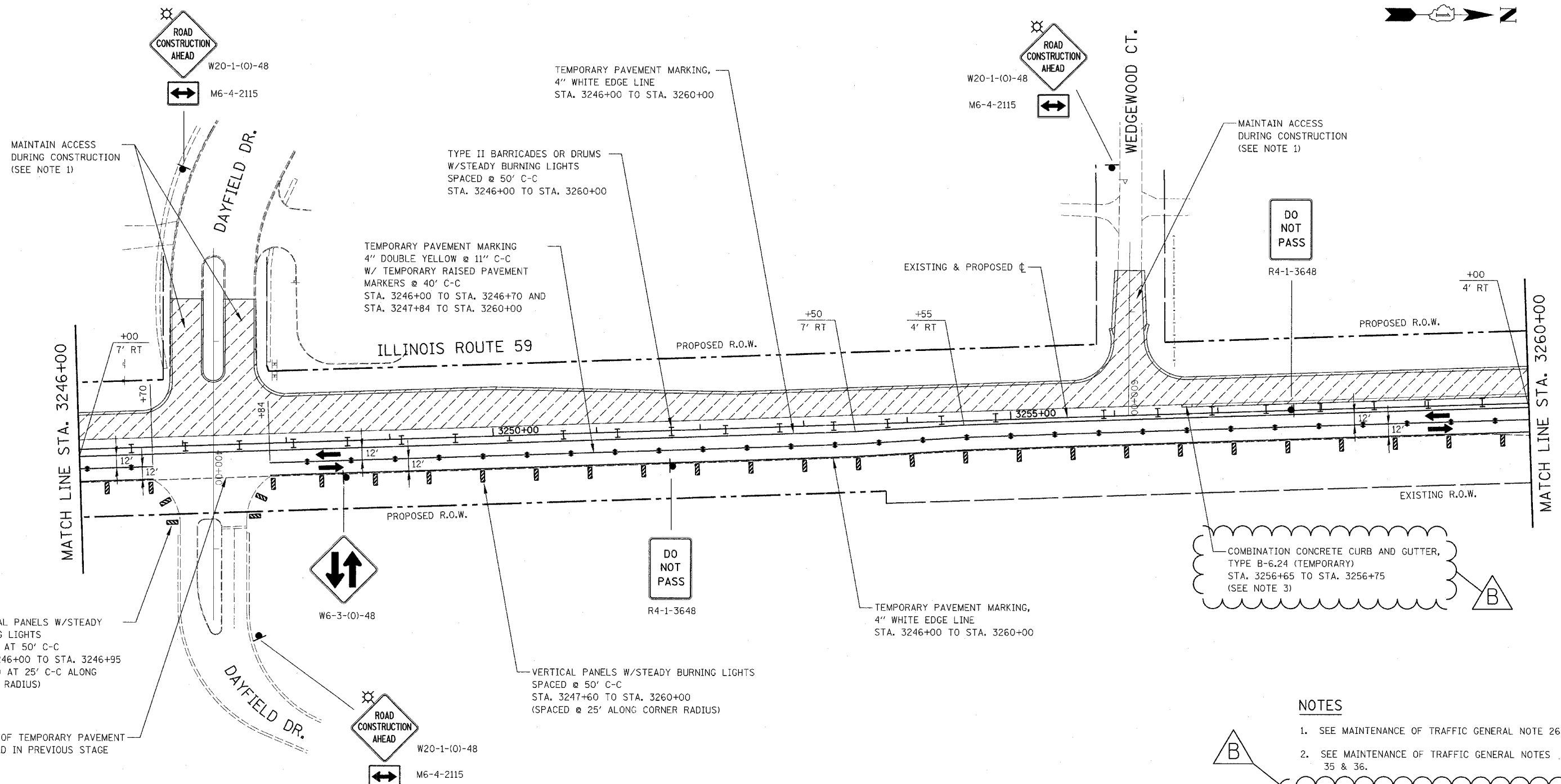


FAP NO.	SECTION	COUNTY	TOTAL SHEETS	SHEET NO.
338	(113 & 114) R-5	WILL	525	98
STA.	TO STA.			
3246+00	3260+00			
PLAN. ROAD DIST. NO.	ILLINOIS	FAP 338 (IL RTE. 59)		



COMBINATION CONCRETE CURB AND GUTTER, TYPE B-6.24 (TEMPORARY) STA. 3256+65 TO STA. 3256+75 (SEE NOTE 3)



NOTES

1. SEE MAINTENANCE OF TRAFFIC GENERAL NOTE 26.
2. SEE MAINTENANCE OF TRAFFIC GENERAL NOTES 35 & 36.
3. SEE TEMPORARY CURB AND GUTTER DETAIL ON MAINTENANCE OF TRAFFIC DETAILS SHEET.

REVISIONS	
NAME	DATE
ADDENDUM B	05-27-08

ILLINOIS DEPARTMENT OF TRANSPORTATION
 DISTRICT NO. 1 SCHAUMBURG
STAGING PLANS
 ILLINOIS ROUTE 59
 STAGE 1

SCALE AS SHOWN
 DATE MARCH 18, 2008

DRAWN BY REW
 CHECKED BY JCM

