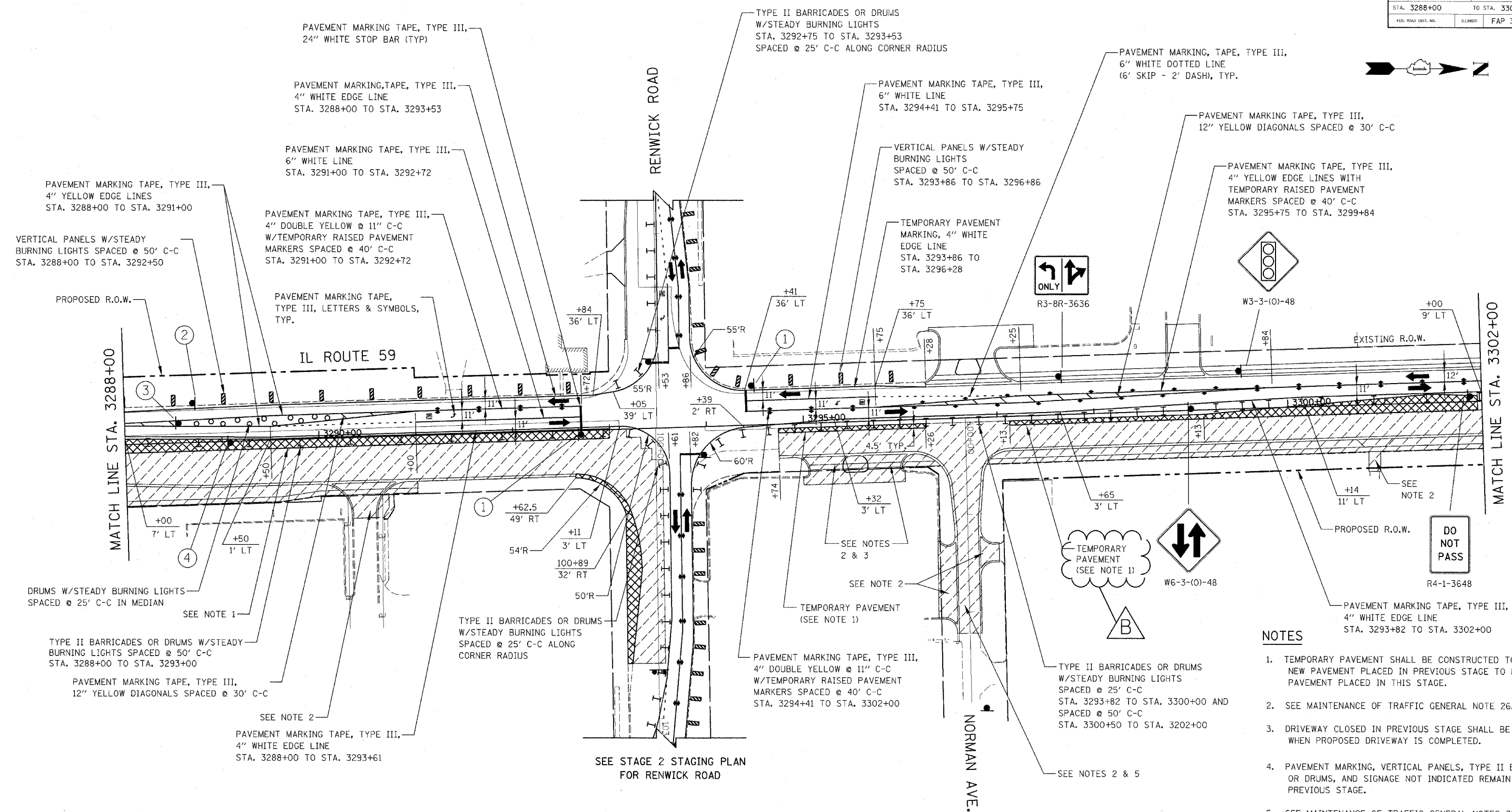


FAP NO.	SECTION	COUNTY	TOTAL SHEETS	SHEET NO.
338	(113 & 114) R-5	WILL	525	124
STA. 3288+00		TO STA. 3302+00		
FED. ROAD DIST. NO.		BILLINGS	FAP 338 (IL RTE. 59)	



- NOTES**
1. TEMPORARY PAVEMENT SHALL BE CONSTRUCTED TO CONNECT NEW PAVEMENT PLACED IN PREVIOUS STAGE TO NEW PAVEMENT PLACED IN THIS STAGE.
  2. SEE MAINTENANCE OF TRAFFIC GENERAL NOTE 26.
  3. DRIVEWAY CLOSED IN PREVIOUS STAGE SHALL BE REOPENED WHEN PROPOSED DRIVEWAY IS COMPLETED.
  4. PAVEMENT MARKING, VERTICAL PANELS, TYPE II BARRICADES OR DRUMS, AND SIGNAGE NOT INDICATED REMAIN FROM PREVIOUS STAGE.
  5. SEE MAINTENANCE OF TRAFFIC GENERAL NOTES 31, 32 & 33.
  6. SEE MAINTENANCE OF TRAFFIC GENERAL NOTES 35 & 36.

**SIGN LEGEND**

①		R10-6-2436	②		W21-1115(0)-3618
		R10-11b-30			R2-1-3648
					R21-1106-3618
					R4-7b-3648



Rev. 05-01-08 JCM

REVISIONS	
NAME	DATE
ADDENDUM B	05-27-08

ILLINOIS DEPARTMENT OF TRANSPORTATION  
DISTRICT NO. 1 SCHAUMBURG

**STAGING PLANS**  
ILLINOIS ROUTE 59  
STAGE 2

SCALE AS SHOWN  
DATE MARCH 18, 2008

DRAWN BY REW  
CHECKED BY JCM