

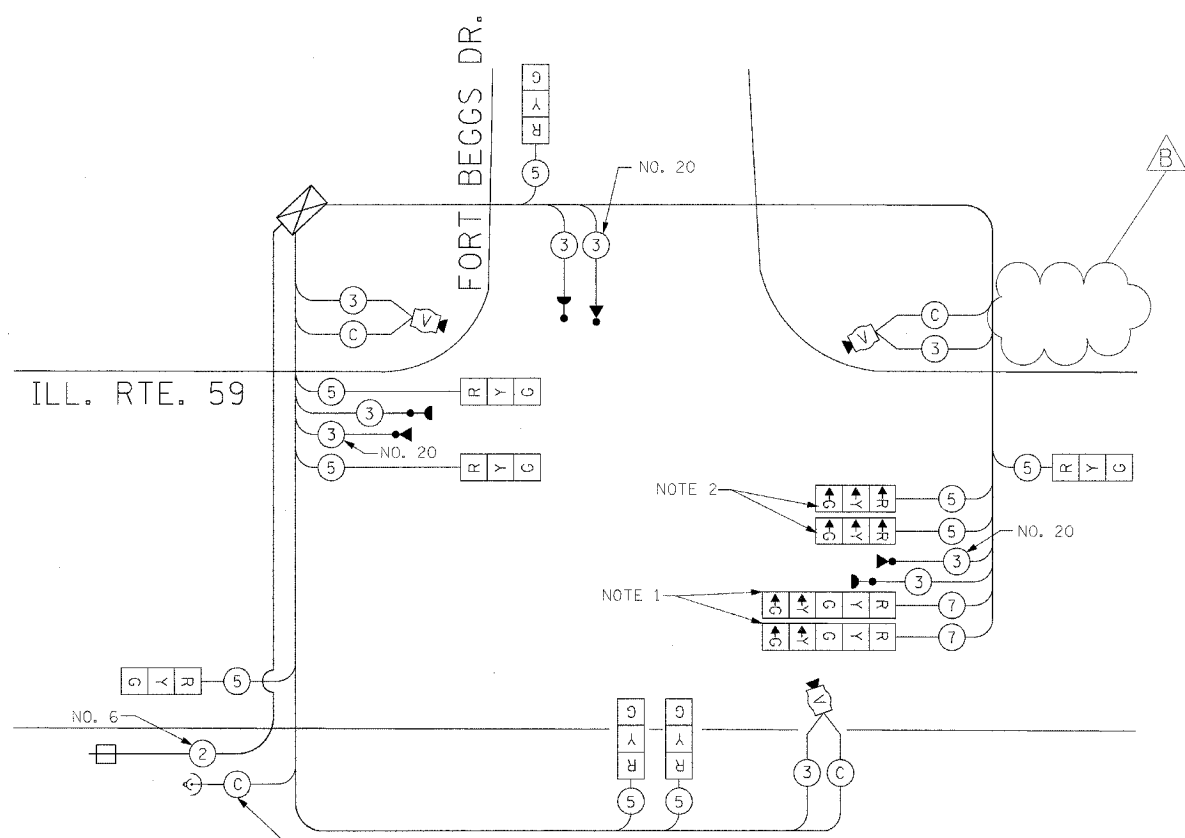
F.A.P. RTE.	SECTION	COUNTY	TOTAL SHEETS	SHEET NO.
338	(113 & 114)R-5	WILL.	525	377

STA. TO STA.
FED. ROAD DIST. NO. 1 ILLINOIS FED. AID PROJECT:

CONTRACT # 62417

TEMPORARY CABLE DIAGRAM LEGEND

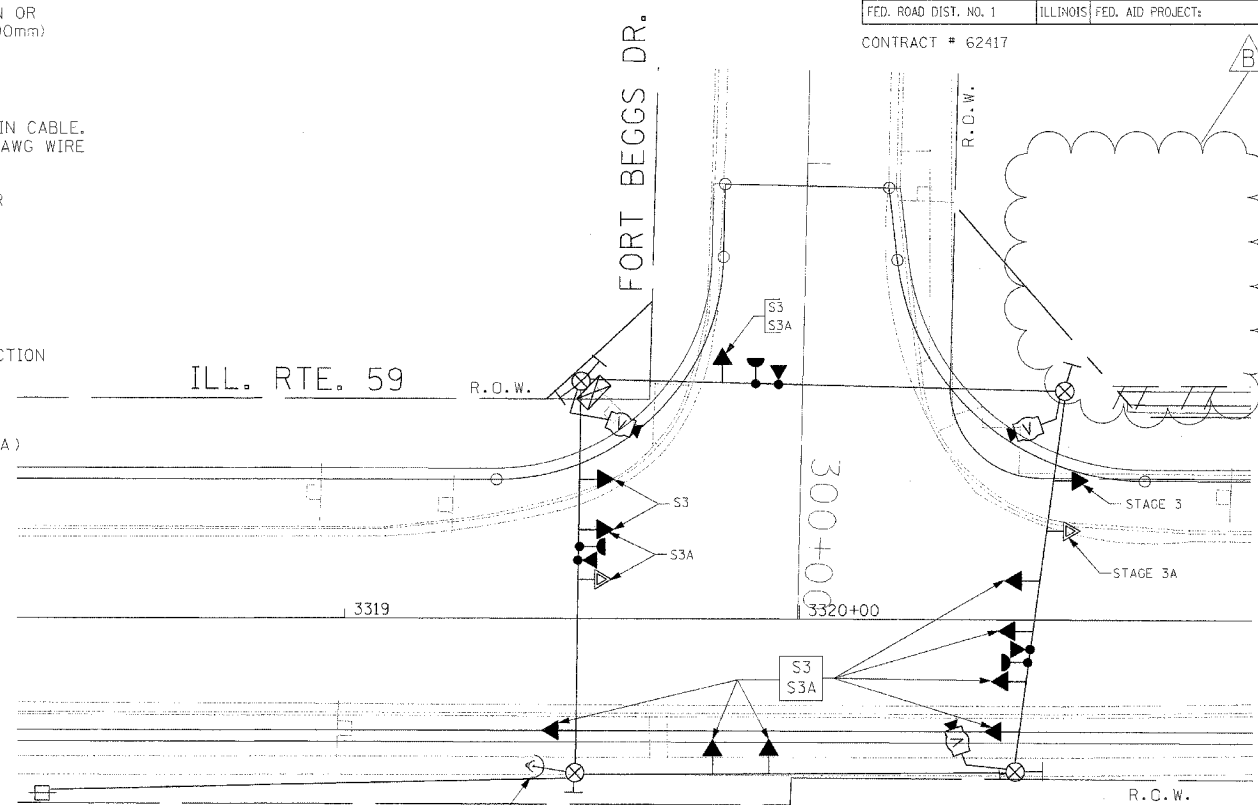
-
-
-
-
-
-
-
-
-
-
-
-



TEMPORARY RADIO INTERCONNECT TO RENWICK RD. AND US RTE. 30 (SEE TEMPORARY INTERCONNECT PLAN)

TEMPORARY CABLE PLAN (NOT TO SCALE)

STAGES: STAGE 3 AND AFTER PROPOSED ROADWAY GEOMETRICS ARE BUILT AND OPEN TO TRAFFIC

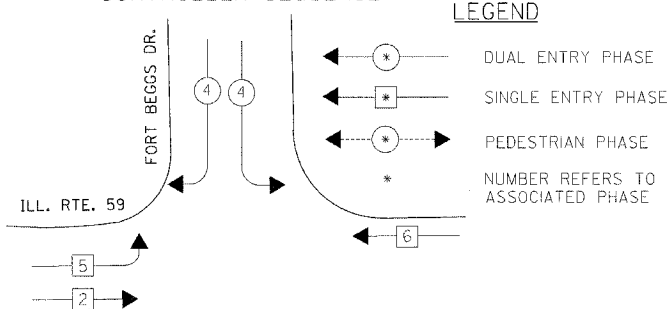


TEMPORARY RADIO INTERCONNECT TO RENWICK RD. AND US RTE. 30 (SEE TEMPORARY INTERCONNECT PLAN)

TEMPORARY TRAFFIC SIGNAL PLAN (SCALE 1"=20')

STAGES: STAGE 3 AND AFTER PROPOSED ROADWAY GEOMETRICS ARE BUILT AND OPEN TO TRAFFIC

CONTROLLER SEQUENCE

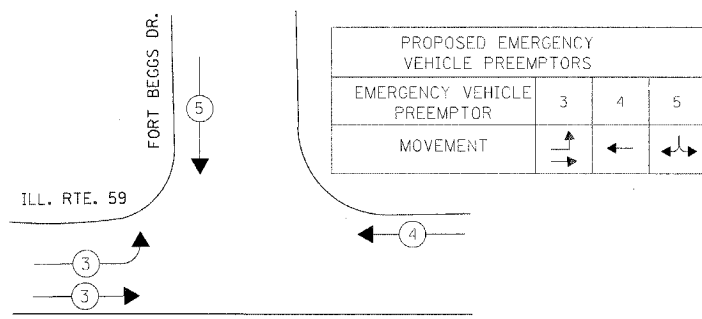


TEMPORARY PHASE DESIGNATION DIAGRAM STAGES: STAGE 3

LEGEND

-
-
-
- NUMBER REFERS TO ASSOCIATED PHASE

EMERGENCY VEHICLE PREEMPTION SEQUENCE



STAGES: STAGE 3

PROPOSED EMERGENCY VEHICLE PREEMPTORS			
EMERGENCY VEHICLE PREEMPTOR	3	4	5
MOVEMENT	→	←	↔

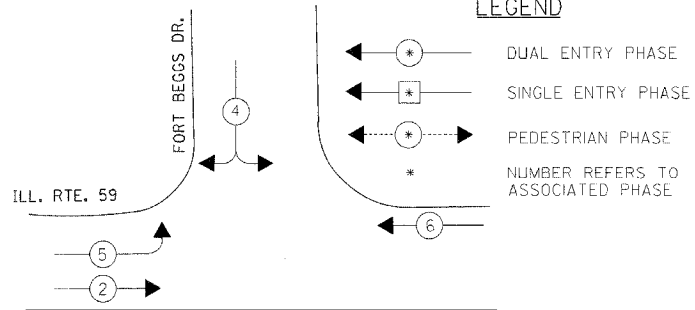
TEMPORARY CABLE PLAN NOTES:

- NOTE 1: DURING CONSTRUCTION STAGE 3 THESE GREEN AND YELLOW LEFT ARROW INDICATION SECTIONS SHALL BE BAGGED AND DISCONNECTED AT THE CONTROLLER. THEY SHALL BE UNBAGGED AND CONNECTED AFTER CONSTRUCTION STAGE 3 UNTIL PROPOSED TRAFFIC SIGNALS ARE MADE OPERATIONAL.
- NOTE 2: THESE SIGNAL HEADS SHALL BE BAGGED AND DISCONNECTED AT THE CONTROLLER AFTER CONSTRUCTION STAGE 3, WHEN ALL THE PROPOSED ROADWAY GEOMETRICS ARE BUILT AND OPEN TO TRAFFIC. THESE SIGNAL HEADS CAN BE REMOVED AFTER STAGE 3 WITH APPROVAL OF THE ENGINEER.

TEMPORARY TRAFFIC SIGNAL LEGEND

-
-
-
-
-
-
-
-
-
-
-
-
-
-
-
-
-
-
-

CONTROLLER SEQUENCE

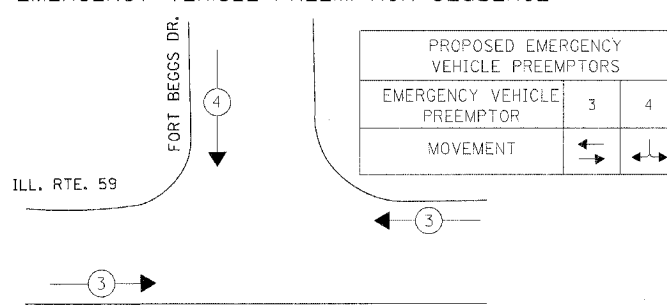


TEMPORARY PHASE DESIGNATION DIAGRAM AFTER PROPOSED ROADWAY GEOMETRICS ARE BUILT AND OPEN TO TRAFFIC

LEGEND

-
-
-
- NUMBER REFERS TO ASSOCIATED PHASE

EMERGENCY VEHICLE PREEMPTION SEQUENCE



AFTER PROPOSED ROADWAY GEOMETRICS ARE BUILT AND OPEN TO TRAFFIC

PROPOSED EMERGENCY VEHICLE PREEMPTORS		
EMERGENCY VEHICLE PREEMPTOR	3	4
MOVEMENT	→	↔

THE TRAFFIC SIGNAL CONTROL EQUIPMENT FOR THIS PROJECT SHALL BE "ECONOLITE" TO MATCH THE EXISTING ADJACENT SYSTEM.

I.D.O.T. TRAFFIC SIGNAL INSTALLATION ELECTRICAL SERVICE REQUIREMENTS					
TYPE	NO LAMPS	WATTAGE		% OPERATION	TOTAL WATTAGE
SIGNAL (RED)	11	135	17	0.50	93.5
(YELLOW)	11	135	25	0.25	68.8
(GREEN)	11	135	15	0.25	41.3
ARROW		135	12	0.10	
PED. SIGNAL		90	25	1.00	
CONTROLLER	1	100	100	1.00	100.0
ILLUM. SIGN				0.05	
FLASHER				0.50	
ENERGY COSTS TO:				TOTAL =	303.5

ILLINOIS DEPARTMENT OF TRANSPORTATION
201 WEST CENTER COURT
SCHAUMBURG, ILLINOIS 60196-1096

ENERGY SUPPLY CONTACT: MS. BETTY BRULC
PHONE: (815) 724-5052
COMPANY: COMED

REVISIONS	
NAME	DATE
PKG, MAA	05-01-08
ADDENDUM B	05-23-08

GO GANDHI AND ASSOCIATES, INC.
ENGINEERS AND PLANNERS
6035 IL NORTHWEST HIGHWAY
SUITE 306
CHICAGO, ILLINOIS 60638 TEL: (773) 774-590

ILLINOIS DEPARTMENT OF TRANSPORTATION
TEMPORARY TRAFFIC SIGNAL INSTALLATION
TEMPORARY CABLE PLAN,
PHASE DESIGNATION DIAGRAM, AND
EMERGENCY VEHICLE PREEMPTION SEQUENCE
ILLINOIS ROUTE 59 AT FORT BEGGS DRIVE
(SHEET 3 OF 3)

SCALE: AS NOTED
DATE: 03/18/2008

DRAWN BY: BB/KP
DESIGNED BY: PKG/RRM
CHECKED BY: PKG/RRM