

525+1=526

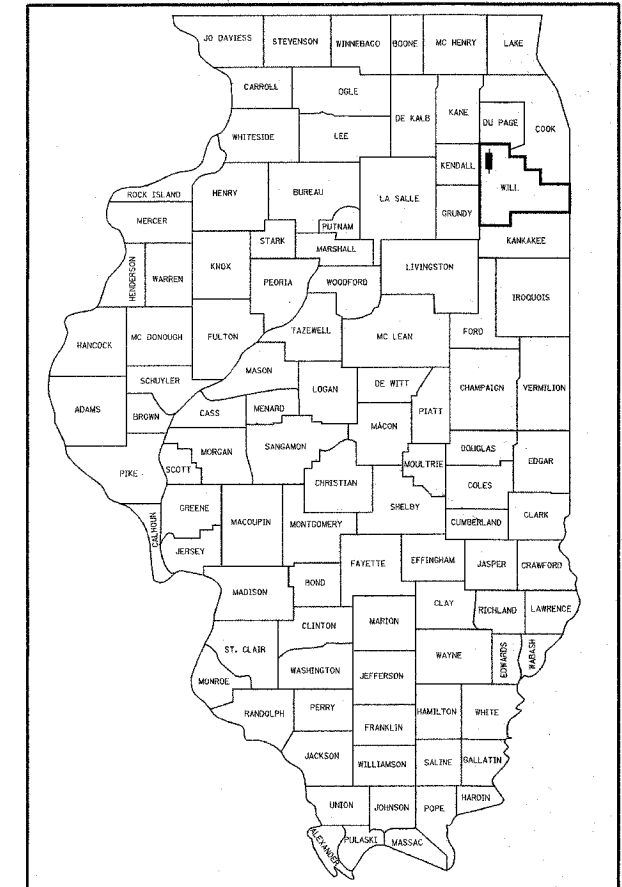
D-91-124-02

STATE OF ILLINOIS  
DEPARTMENT OF TRANSPORTATION  
DIVISION OF HIGHWAYS

**PROPOSED  
HIGHWAY PLANS**  
**(FAP 338) IL ROUTE 59**

**ILL 126 (W. LOCKPORT ST.) TO CATON FARM ROAD**

**SECTION 113 & 114 R-5**  
**PROJECT NO: ACNHF-0338(034)**  
**ROADWAY RECONSTRUCTION**  
**WILL COUNTY**  
**C-91-124-02**



LOCATION OF SECTION INDICATED THUS: - [thick black line] -

**INDEX OF SHEETS**

SEE SHEET NO. 2

**STANDARDS**

SEE SHEET NO. 2

**TRAFFIC DATA**

ADT (IL RTE 59) = 30,600 (SPEED LIMIT SOUTH OF FRASER RD / FEENEY DR = 45 MPH)  
ADT (IL RTE 59) = 30,600 (SPEED LIMIT FROM FRASER RD / FEENEY DR TO ROBERTS AVE. = 40 MPH)  
ADT (IL RTE 59) = 30,600 (SPEED LIMIT NORTH OF ROBERTS AVE. = 35 MPH)

ADT (FRASER RD / FEENEY DR) = 7,000 (SPEED LIMIT = 35 MPH)  
ADT (RENWICK RD) = 14,000 (SPEED LIMIT = 30 MPH)  
ADT (FORT BEGGS DR) = 7,000 (SPEED LIMIT = 30 MPH)

**PROJECT LOCATION**

VILLAGE OF PLAINFIELD  
CITY OF JOLIET  
WILL COUNTY

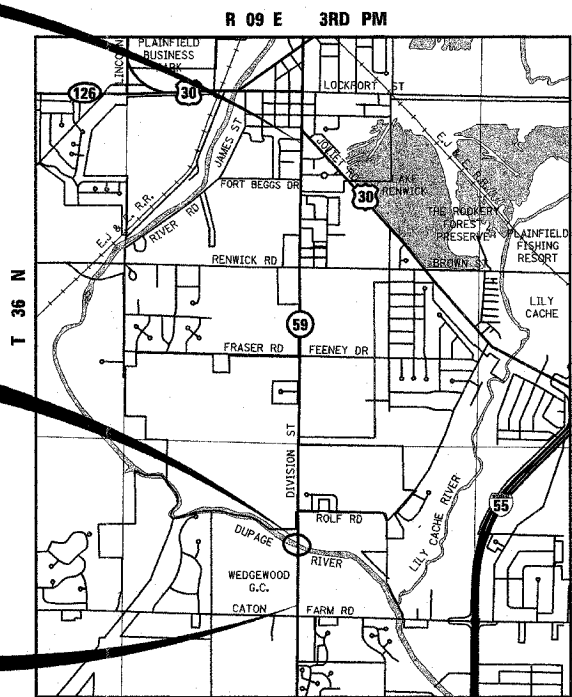
**DESIGN DESIGNATION**

3,925 (24) OTHER PRINCIPAL ARTERIAL 11.85 (PCC-20)

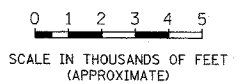
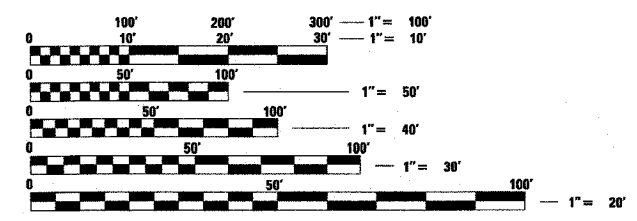
END OF IMPROVEMENT  
IL. ROUTE 59  
STA. 3330 + 16

OMISSION BRIDGE OVER  
DUPAGE RIVER STA. 3206 + 26  
TO STA. 3213 + 60

BEGIN OF IMPROVEMENT  
IL. ROUTE 59  
STA. 3193 + 25



PLAINFIELD TOWNSHIP  
LOCATION MAP



NET LENGTH OF PROJECT = 12,957 FEET = 2.5 MILES  
GROSS LENGTH OF PROJECT = 13,691 FEET = 2.6 MILES

FULL SIZE PLANS HAVE BEEN PREPARED USING STANDARD ENGINEERING SCALES, REDUCED SIZED PLANS WILL NOT CONFORM TO STANDARD SCALES, IN MAKING MEASUREMENTS ON REDUCED PLANS, THE ABOVE SCALES MAY BE USED.

J.U.L.I.E.  
JOINT UTILITY LOCATION INFORMATION FOR EXCAVATION  
1-800-892-0123 OR 811

CONTRACT NO. 62417

PROJECT COORDINATOR: MS. KIM HARVEY (847)-705-4555



SIGNED: *John C. Murillo*  
John C. Murillo, P.E. Il. Lic. No. 062-052397  
Expires 11/30/2009

DATE: 03/07/08

EXCLUDES DRAWING NO. 244 TO 308 AND 388 TO 390

STATE OF ILLINOIS  
DEPARTMENT OF TRANSPORTATION  
DIVISION OF HIGHWAYS

SUBMITTED MARCH 12, 2008

*Diana M. O'Keefe*  
DISTRICT ENGINEER

May 9, 2008  
*Eric E. Harms*  
ENGINEER OF DESIGN AND ENVIRONMENT

May 9, 2008  
*Christina M. Reed*  
DIRECTOR, DIVISION OF HIGHWAYS

**PRINTED BY THE AUTHORITY  
OF THE STATE OF ILLINOIS**

Plans Prepared By:  
**KNIGHT**  
Engineers & Architects

221 North LaSalle Street  
Suite 300  
Chicago, IL 60601-4211  
Phone: (312) 577-3300