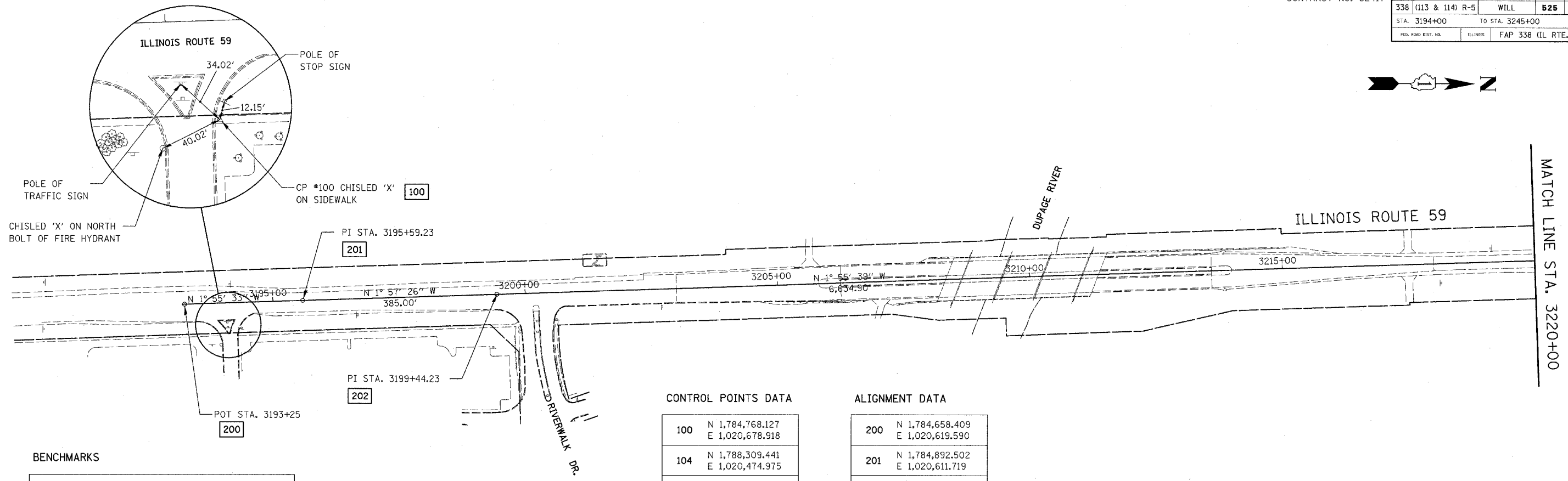
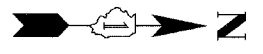


FAP DIST.	SECTION	COUNTY	TOTAL SHEETS	SHEET NO.
338 (113 & 114) R-5		WILL	625	61
STA. 3194+00		TO STA. 3245+00		
FED. ROAD DIST. NO.	ILLINOIS	FAP 338 (IL RTE. 59)		



**BENCHMARKS**

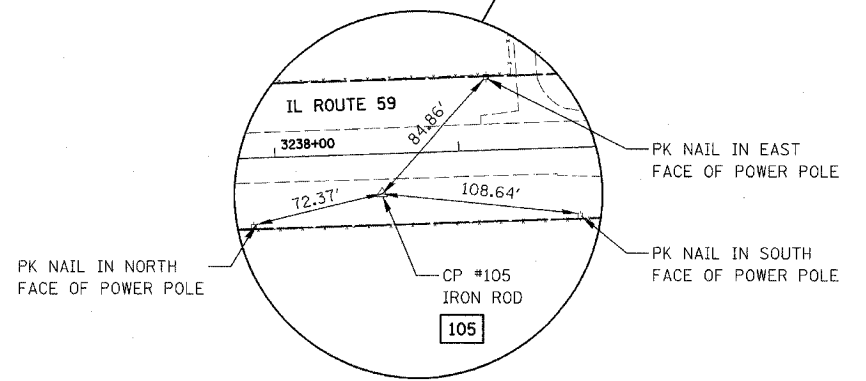
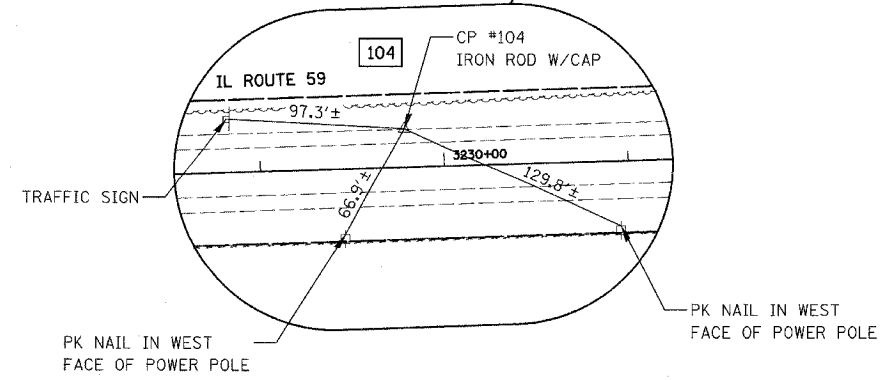
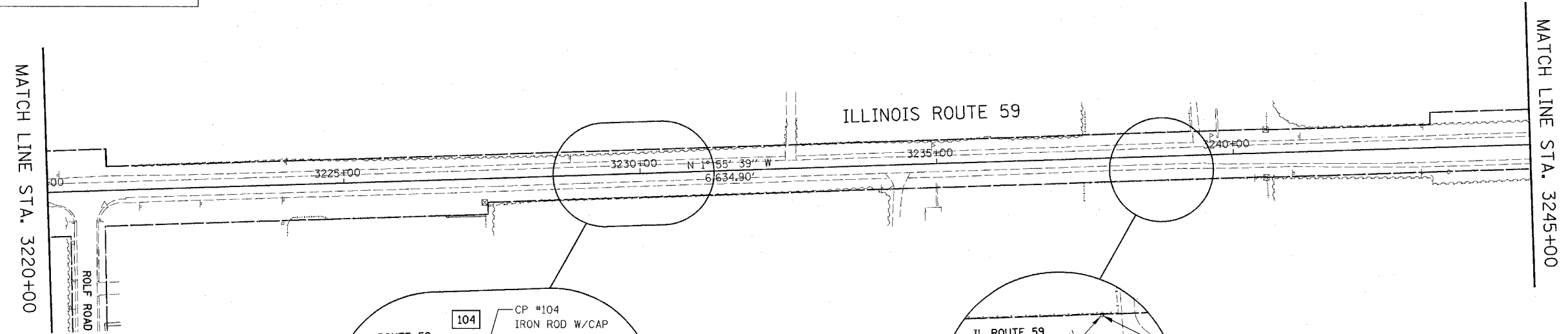
**BM #15**  
 SQUARE CUT IN SE CORNER OF TRAFFIC SIGNAL  
 HANDHOLE IN NE CORNER IL. ROUTE 59 AND  
 CATON FARM ROAD (OFF THE VIEW OF THIS SHEET)  
 ELEV. 602.35

**CONTROL POINTS DATA**

100	N 1,784,768.127 E 1,020,678.918
104	N 1,788,309.441 E 1,020,474.975
105	N 1,789,189.158 E 1,020,488.943

**ALIGNMENT DATA**

200	N 1,784,658.409 E 1,020,619.590
201	N 1,784,892.502 E 1,020,611.719
202	N 1,785,277.278 E 1,020,598.570



**NOTE**  
 ENLARGED DETAILS ARE NOT TO SCALE.

ILLINOIS DEPARTMENT OF TRANSPORTATION  
 DISTRICT NO. 1 SCHAUMBURG  
 ILLINOIS ROUTE 59  
 ALIGNMENT, BENCHMARKS,  
 AND TIES



Rev. 05-01-08 JCM

SCALE 1" = 100'  
 DATE MARCH 18, 2008  
 DRAWN BY REW  
 CHECKED BY JCM