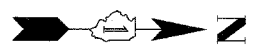
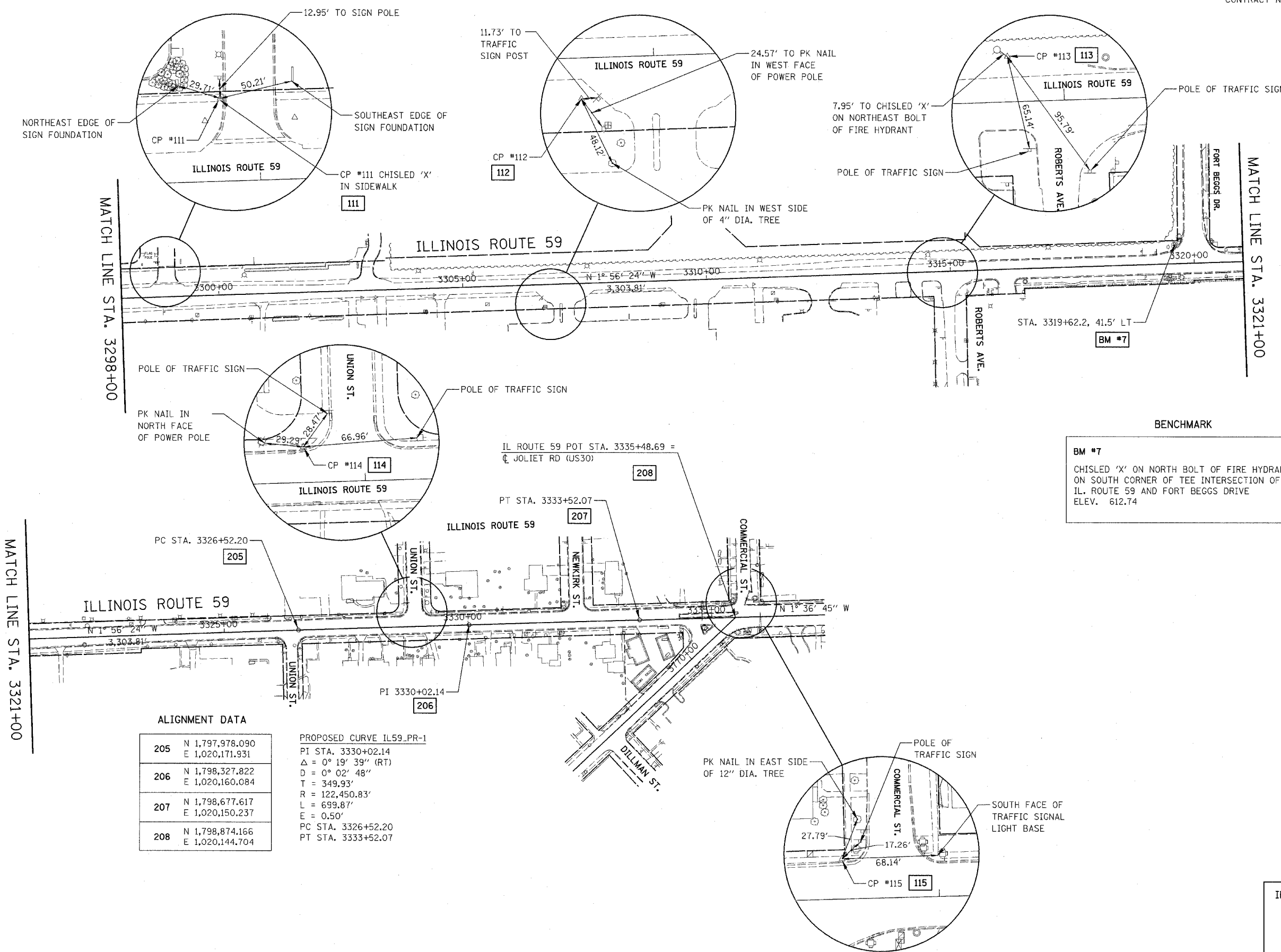


FAP NO.	SECTION	COUNTY	TOTAL SHEETS	SHEET NO.
338	(113 & 114) R-5	WILL	525	63
STA. 3298+00		TO STA. 3335+50		
FED. ROAD DIST. NO.		ILLINOIS	FAP 338 (IL RTE. 59)	



ALIGNMENT DATA

205	N 1,797,978.090 E 1,020,171.931
206	N 1,798,327.822 E 1,020,160.084
207	N 1,798,677.617 E 1,020,150.237
208	N 1,798,874.166 E 1,020,144.704

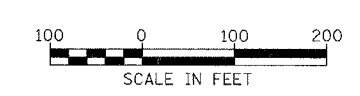
PROPOSED CURVE IL59-PR-1
 PI STA. 3330+02.14
 $\Delta = 0^\circ 19' 39''$ (RT)
 $D = 0^\circ 02' 48''$
 $T = 349.93'$
 $R = 122,450.83'$
 $L = 699.87'$
 $E = 0.50'$
 PC STA. 3326+52.20
 PT STA. 3333+52.07

BENCHMARK

BM #7
 CHISLED 'X' ON NORTH BOLT OF FIRE HYDRANT ON SOUTH CORNER OF TEE INTERSECTION OF IL. ROUTE 59 AND FORT BEGGS DRIVE
 ELEV. 612.74

CONTROL POINTS DATA

111	N 1,795,199.623 E 1,020,209.850
112	N 1,795,977.662 E 1,020,267.490
113	N 1,796,787.603 E 1,020,181.394
114	N 1,798,183.326 E 1,020,140.817
115	N 1,798,858.890 E 1,020,117.664



NOTE:
 ENLARGED DETAILS ARE NOT TO SCALE.

ILLINOIS DEPARTMENT OF TRANSPORTATION
 DISTRICT NO. 1 SCHAUMBURG

**ILLINOIS ROUTE 59
 ALIGNMENT, BENCHMARKS,
 AND TIES**

SCALE 1" = 100'
 DATE MARCH 18, 2008

DRAWN BY REW
 CHECKED BY JCM