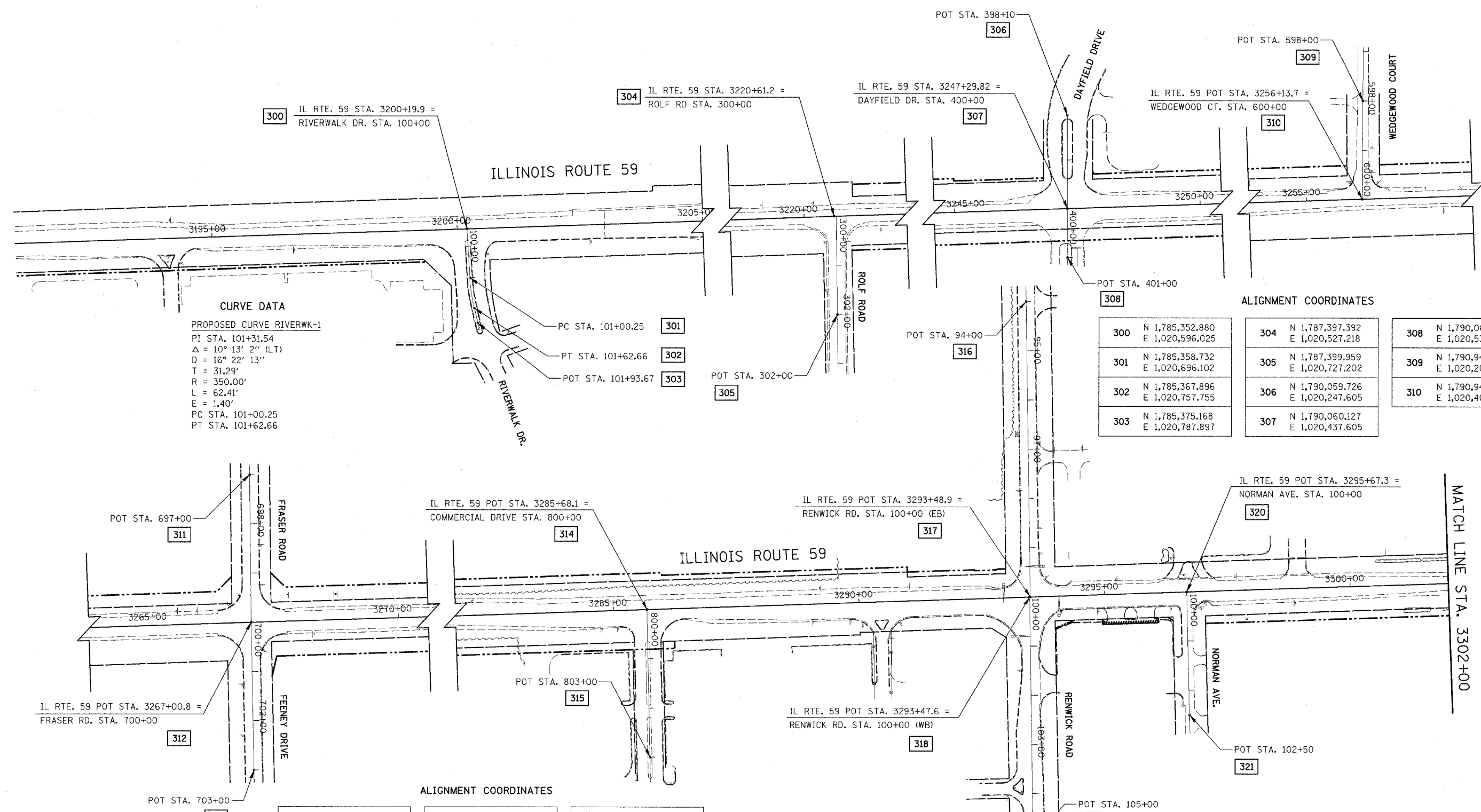


FAP NO.	SECTION	COUNTY	TOTAL SHEETS	SHEET NO.
338	(113 & 114) R-5	WILL	525	64
STA.	TO STA.			
FED. ROAD DIST. NO.	LENGTH	FAP 338 (IL RTE. 59)		



CURVE DATA
 PROPOSED CURVE RIVERWK-1
 PI STA. 101+31.54
 $\Delta = 10^\circ 13' 2''$ (LT)
 $D = 16^\circ 22' 13''$
 $T = 31.29'$
 $R = 350.00'$
 $L = 62.41'$
 $E = 1.40'$
 PC STA. 101+00.25
 PT STA. 101+62.66

ALIGNMENT COORDINATES

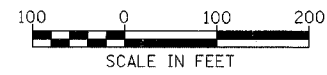
300	N 1,785,352.880 E 1,020,596.025	304	N 1,787,397.392 E 1,020,527.218	308	N 1,790,060.339 E 1,020,537.604
301	N 1,785,358.732 E 1,020,696.102	305	N 1,787,399.959 E 1,020,727.202	309	N 1,790,944.700 E 1,020,207.877
302	N 1,785,367.896 E 1,020,757.755	306	N 1,790,059.726 E 1,020,247.605	310	N 1,790,943.528 E 1,020,407.874
303	N 1,785,375.168 E 1,020,787.897	307	N 1,790,060.127 E 1,020,437.605		

ALIGNMENT COORDINATES

311	N 1,792,025.741 E 1,020,071.397	315	N 1,793,902.566 E 1,020,609.526	319	N 1,794,683.150 E 1,020,783.740
312	N 1,792,029.315 E 1,020,371.399	316	N 1,794,667.727 E 1,019,683.824	320	N 1,794,994.873 E 1,020,272.979
313	N 1,792,035.305 E 1,020,671.320	317	N 1,794,676.651 E 1,020,283.758	321	N 1,795,000.915 E 1,020,522.906
314	N 1,793,896.353 E 1,020,309.590	318	N 1,794,675.351 E 1,020,283.801		

ILLINOIS DEPARTMENT OF TRANSPORTATION
 DISTRICT NO. 1 SCHAUMBURG

**ILLINOIS ROUTE 59
 SIDE ROADS ALIGNMENT**



SCALE 1" = 100'
 DATE MARCH 18, 2008
 DRAWN BY RTA
 CHECKED BY JCM