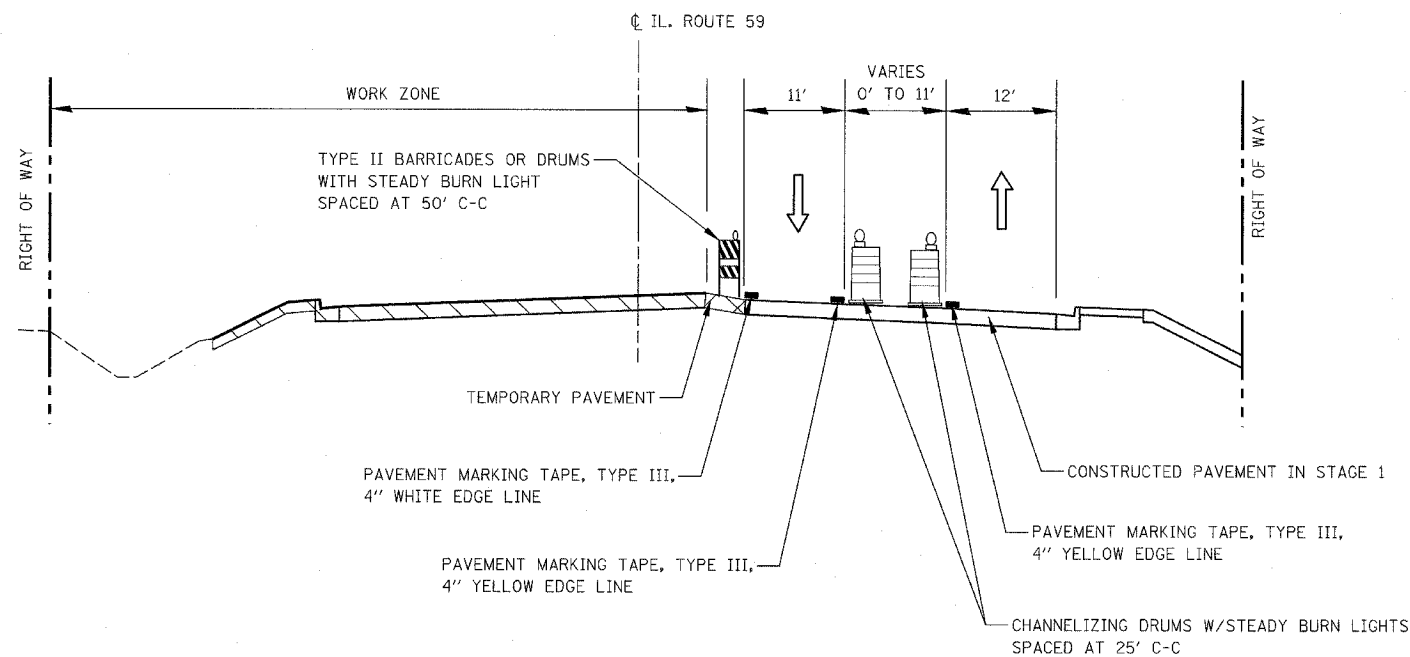
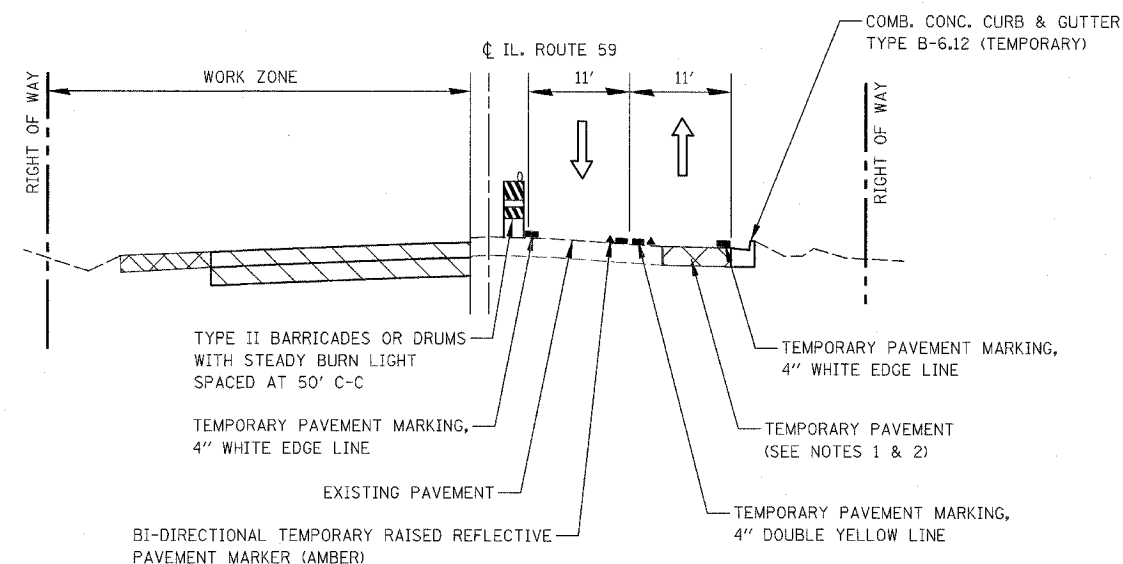


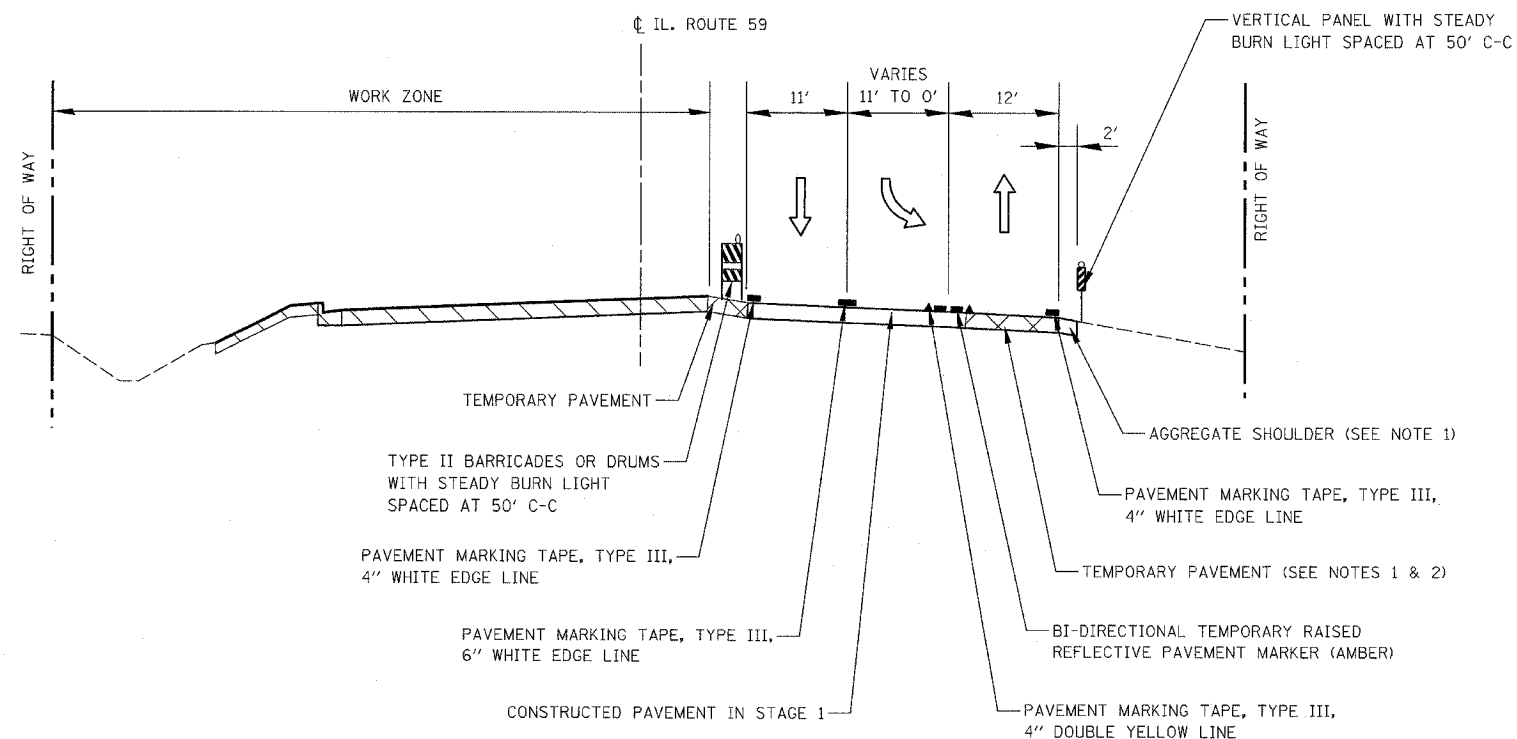
FAP DIST.	SECTION	COUNTY	TOTAL SHEETS	SHEET NO.
338	(113 & 114) R-5	WILL	525	73
STA.	TO STA.			
FED. ROAD DIST. NO.	ILLINOIS	FAP 338 (IL RTE. 59)		



STAGE 1A
STA. 3195+59 TO RIVERWALK DRIVE



STAGE 1A
ROBERTS AVENUE TO STA 3324+00



STAGE 1A
RIVERWALK DRIVE TO STA 3206+24

NOTES

1. FOR DETAILS SEE TEMPORARY PAVEMENT DETAIL ON MAINTENANCE OF TRAFFIC DETAILS SHEET.
2. SEE MAINTENANCE OF TRAFFIC PLANS FOR TEMPORARY PAVEMENT PLACEMENT DETAILS.

ILLINOIS DEPARTMENT OF TRANSPORTATION
DISTRICT NO. 1 SCHAUMBURG
MAINTENANCE OF TRAFFIC
TYPICAL SECTIONS
STAGE 1A

SCALE NOT TO SCALE
DATE MARCH 18, 2008
DRAWN BY REW
CHECKED BY HME