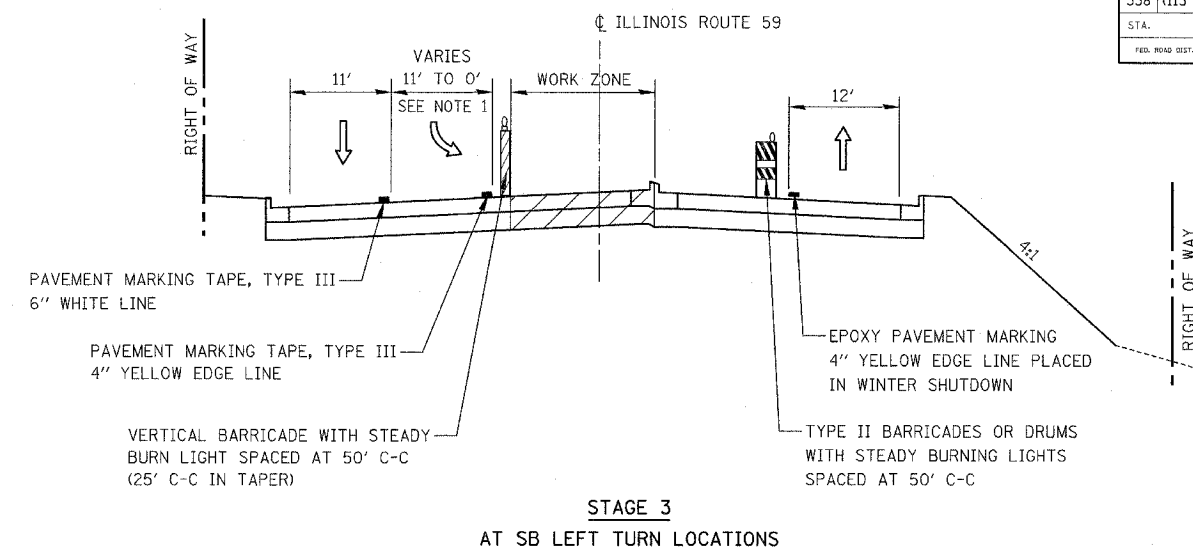
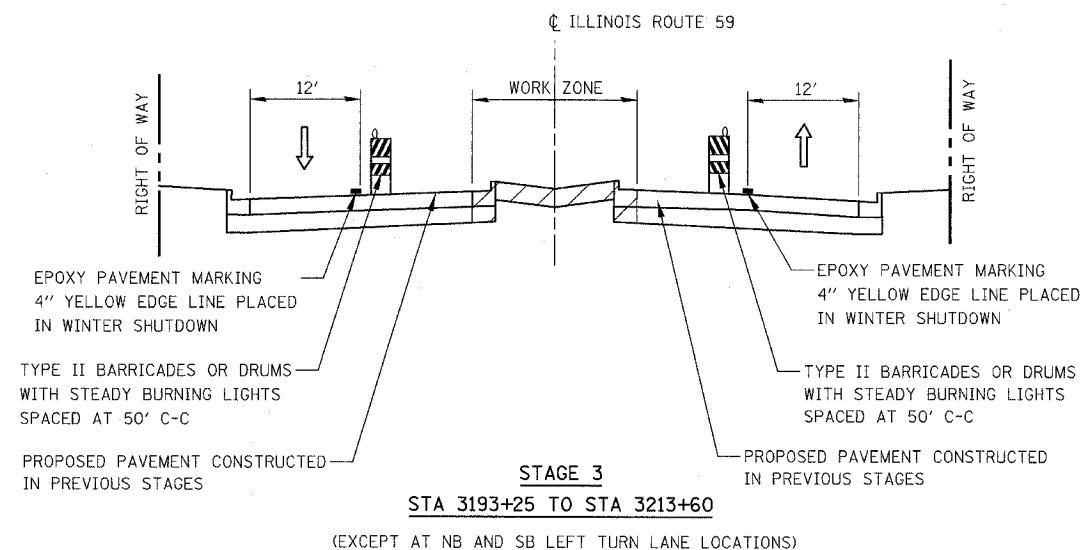
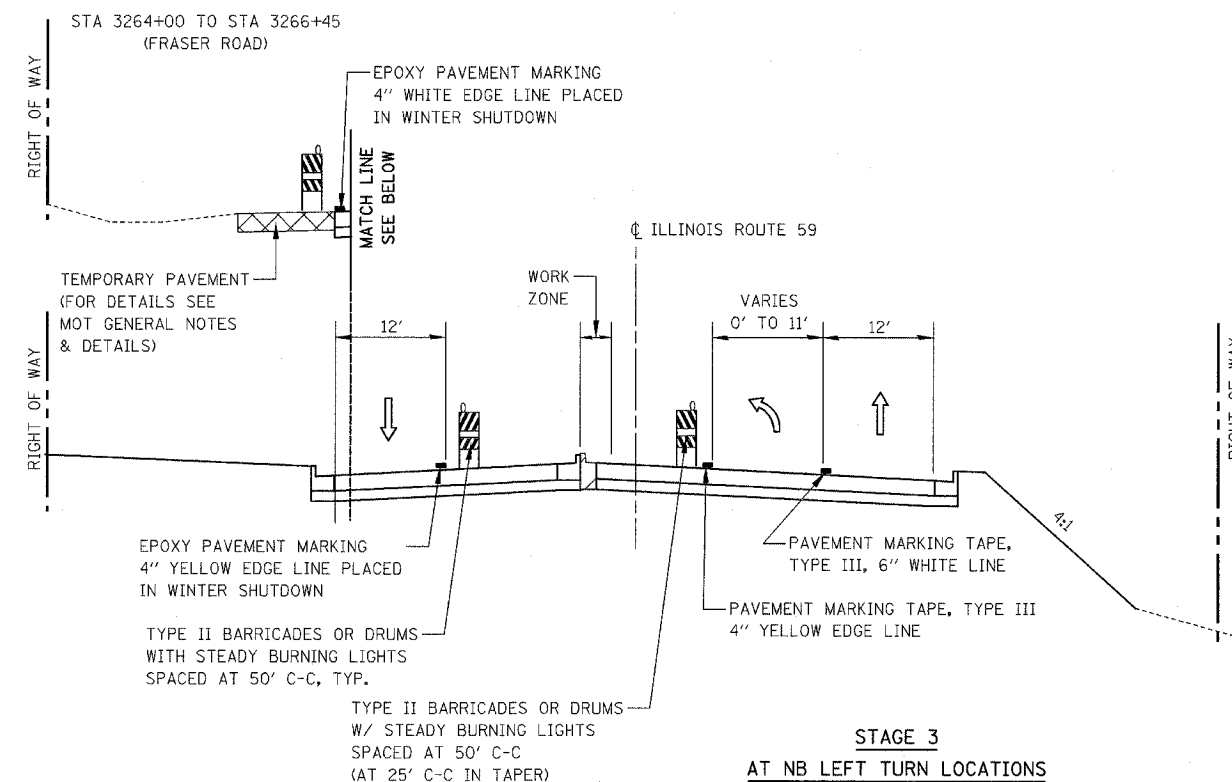
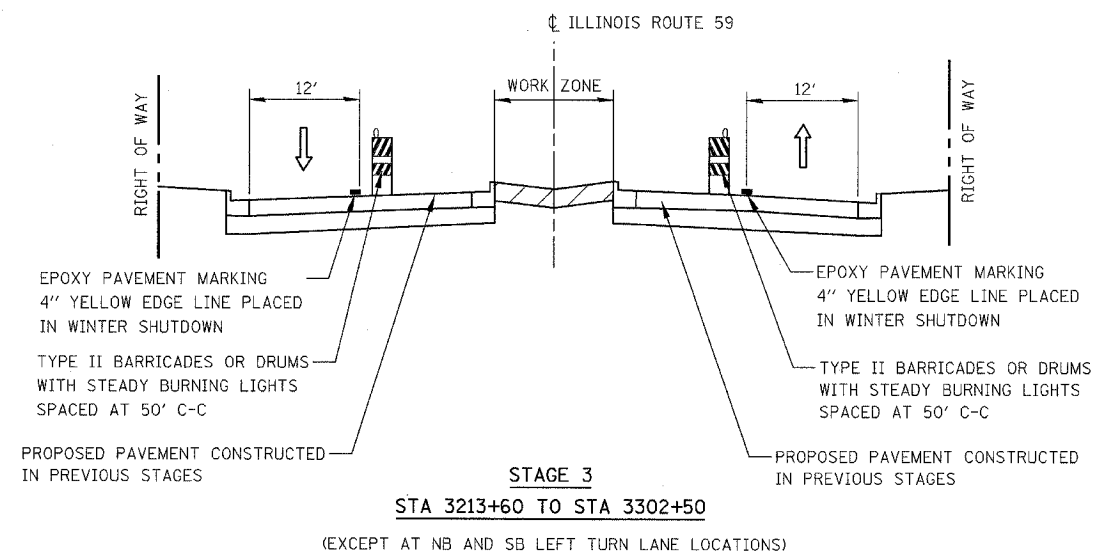


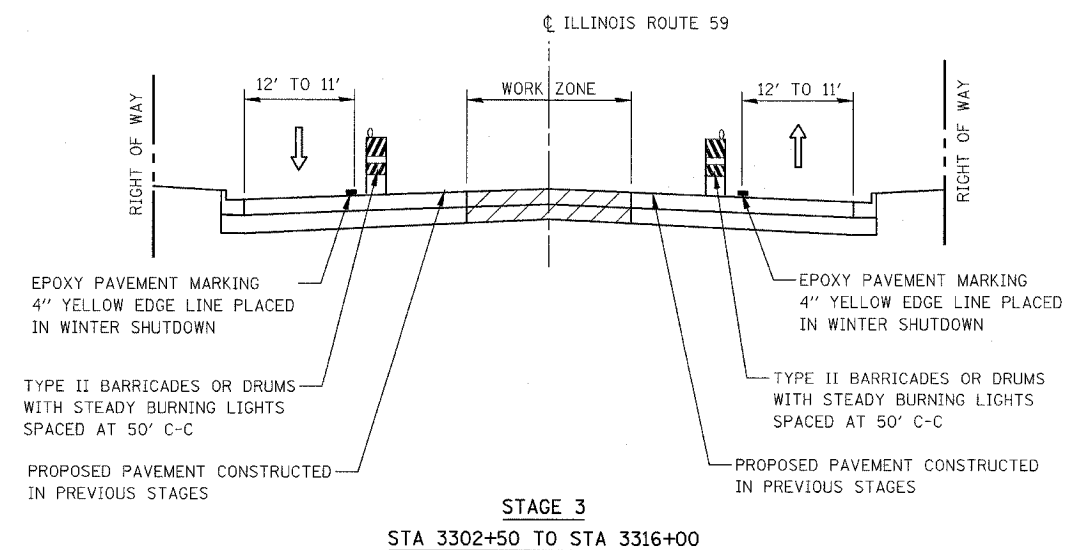
FAP NO.	SECTION	COUNTY	TOTAL SHEETS	SHEET NO.
338	(113 & 114) R-5	WILL	525	76
STA.	TO STA.			
FED. ROAD DIST. NO.	ILLINOIS	FAP 338 (IL RTE. 59)		



STA 3200+50 TO STA 3203+10 (RIVERWALK DRIVE)  
STA 3220+90 TO STA 3223+25 (ROLF ROAD)  
STA 3247+75 TO STA 3250+30 (DAYFIELD DRIVE)



STA 3252+70 TO STA 3255+80 (WEDGEWOOD COURT)  
STA 3264+00 TO STA 3266+45 (FRASER ROAD)  
STA 3276+75 TO STA 3279+25 (COMMERCIAL ENTRANCE)



NOTES

- DAYTIME CLOSURE OF LEFT TURN LANE DURING OFF-PEAK HOURS WILL BE ALLOWED. CONTRACTOR SHALL PROVIDE FLAGGERS DURING CLOSURE OF LEFT TURN LANE. COST OF LANE CLOSURE AND FLAGGERS SHALL BE INCLUDED IN THE CONTRACT UNIT COST FOR TRAFFIC CONTROL AND PROTECTION (SPECIAL)
- AT SB LEFT TURN LOCATIONS WITH NO ADJACENT WORK ZONE, REFER TO WINTER SHUTDOWN MOT TYPICAL SECTIONS.

ILLINOIS DEPARTMENT OF TRANSPORTATION  
DISTRICT NO. 1 SCHAUMBURG  
MAINTENANCE OF TRAFFIC  
TYPICAL SECTIONS  
STAGE 3

SCALE NOT TO SCALE  
DATE MARCH 18, 2008  
DRAWN BY REW  
CHECKED BY HME