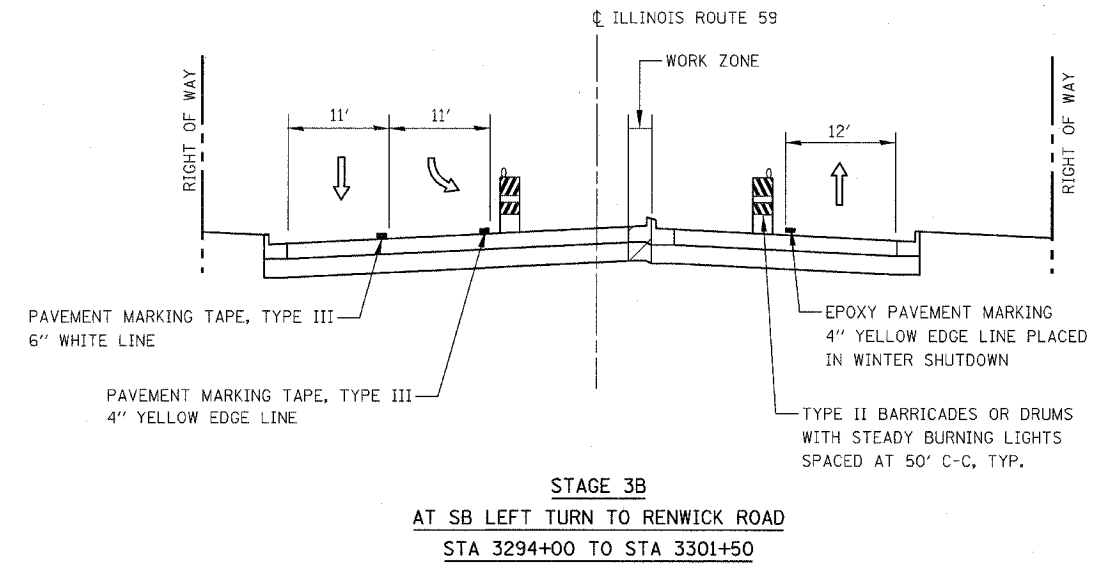
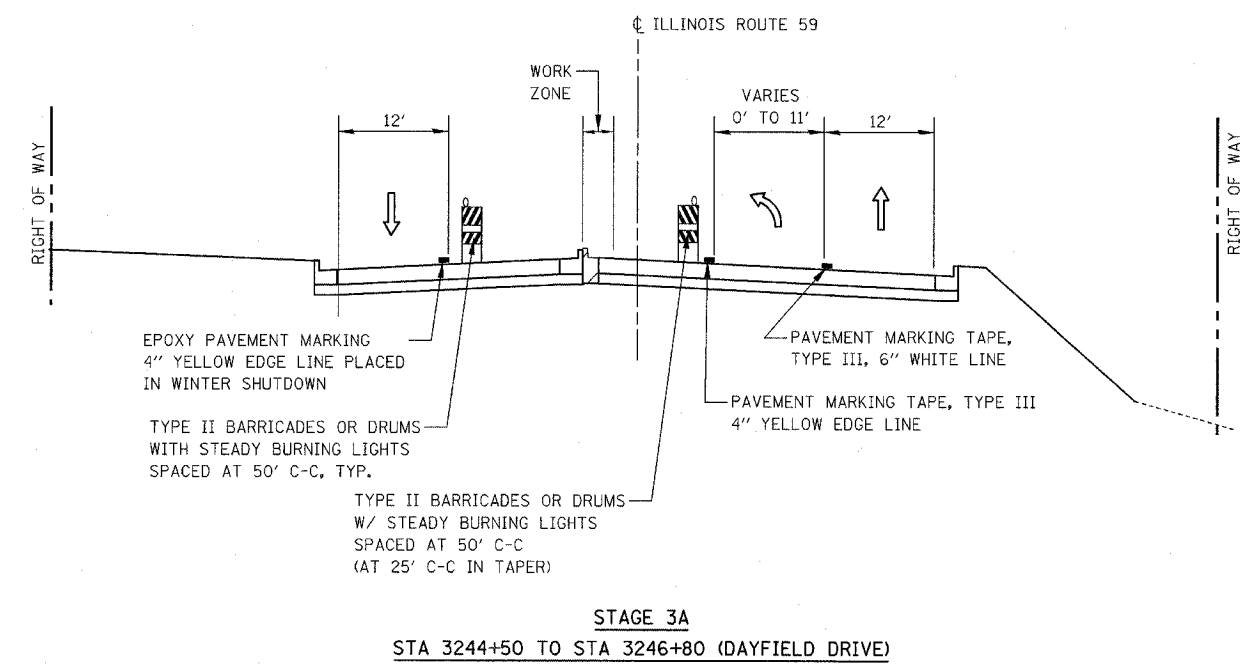
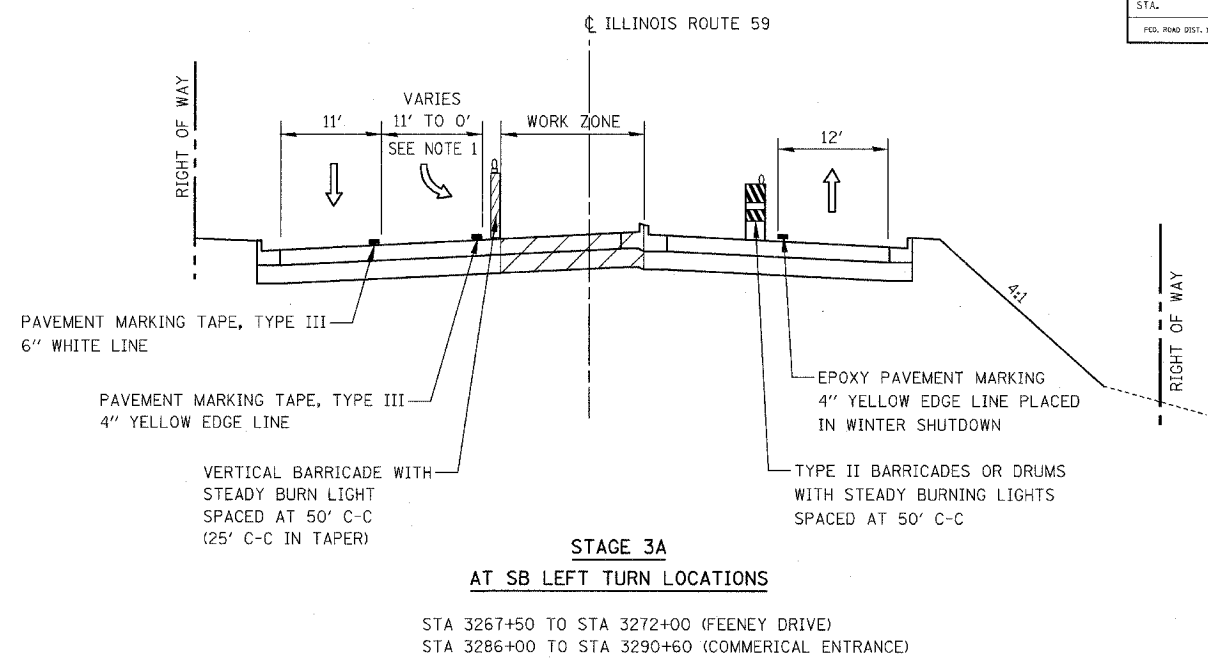
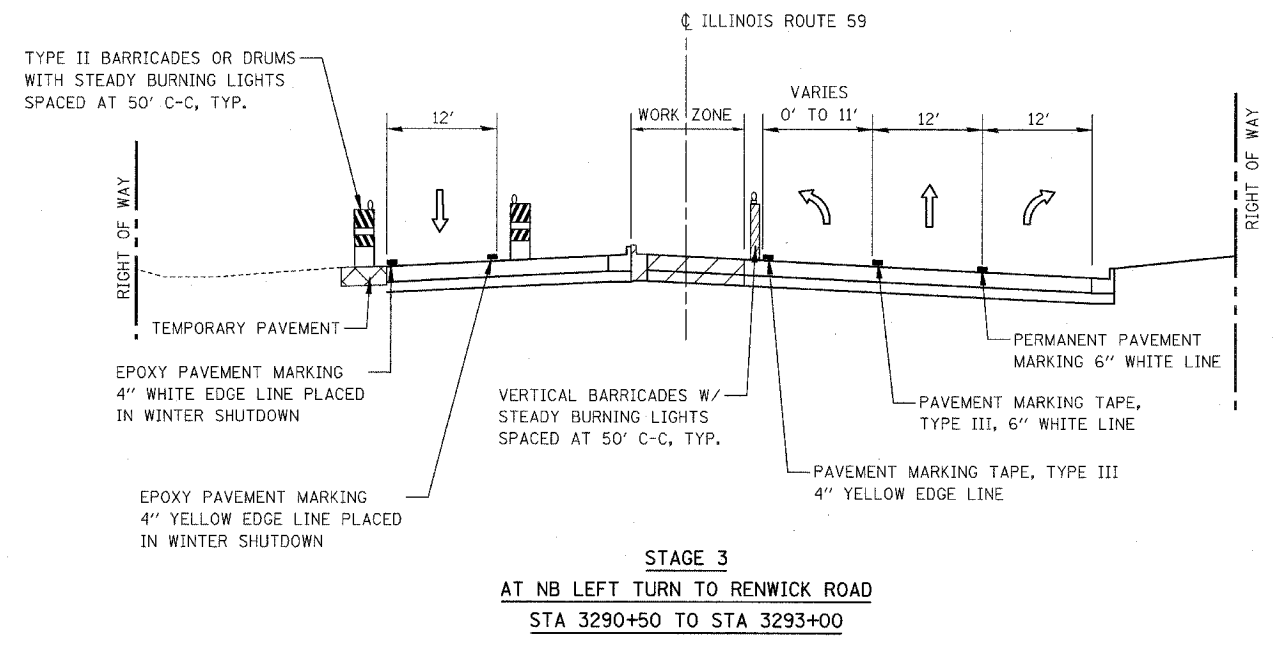


FAP NO.	SECTION	COUNTY	TOTAL SHEETS	SHEET NO.
338	(113 & 114) R-5	WILL	525	77
STA. TO STA.				
FED. ROAD DIST. NO. ILLINOIS FAP 338 (IL RTE. 59)				



NOTES

1. DAYTIME CLOSURE OF LEFT TURN LANE DURING OFF-PEAK HOURS WILL BE ALLOWED. CONTRACTOR SHALL PROVIDE FLAGGERS DURING CLOSURE OF LEFT TURN LANE. COST OF LANE CLOSURE AND FLAGGERS SHALL BE INCLUDED IN THE CONTRACT UNIT COST FOR TRAFFIC CONTROL AND PROTECTION (SPECIAL)
2. AT LOCATIONS WITH NO ADJACENT WORK ZONE, REFER TO WINTER SHUTDOWN MOT TYPICAL SECTIONS.

ILLINOIS DEPARTMENT OF TRANSPORTATION
DISTRICT NO. 1 SCHAUMBURG
MAINTENANCE OF TRAFFIC
TYPICAL SECTIONS
STAGE 3, 3A, 3B