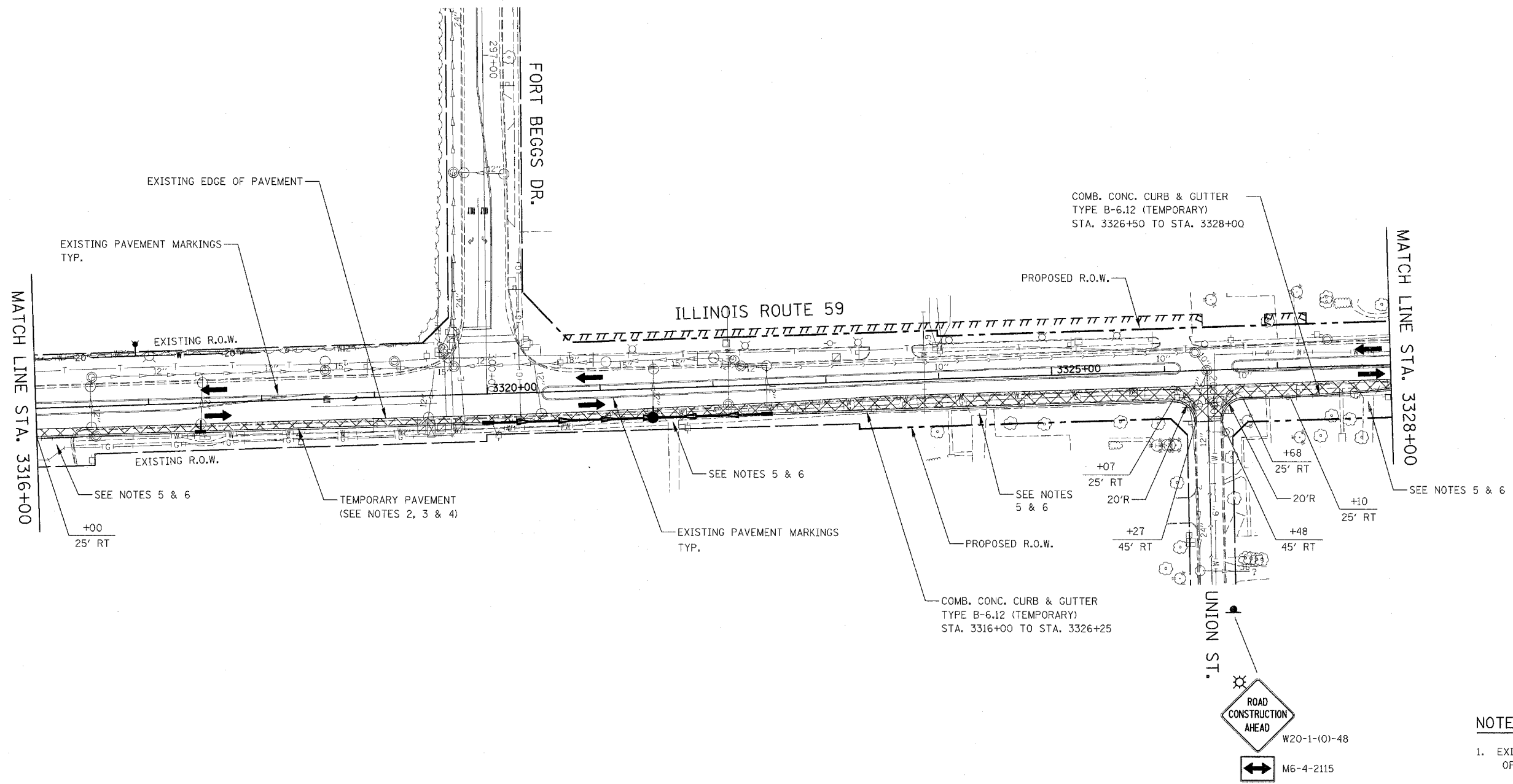


CONTRACT NO. 62417

FAP NO.	SECTION	COUNTY	TOTAL SHEETS	SHEET NO.
338	(113 & 114) R-5	WILL	525	08
STA. 3316+00		TO STA. 3328+00		
FED. ROAD DIST. NO.	ILLINOIS	FAP 338 (IL RTE. 59)		

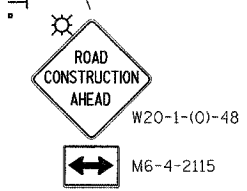


FOR TEMPORARY PAVEMENT CONSTRUCTION  
USE HIGHWAY STANDARDS NO. 701326 & 701701

FOR STORM SEWER AND WATER MAIN CONSTRUCTION  
USE HIGHWAY STANDARDS NO. 701001, 701006 & 701011

**NOTES**

1. EXISTING LANE CONFIGURATIONS ARE TO REMAIN IN OPERATION DURING THIS STAGE OF CONSTRUCTION.
2. SEE TEMPORARY PAVEMENT DETAIL ON MAINTENANCE OF TRAFFIC DETAILS SHEET.
3. SEE CROSS SECTIONS FOR GRADING DETAILS.
4. SEE MAINTENANCE OF TRAFFIC GENERAL NOTE 25.
5. WHEN DIRECTED BY THE ENGINEER, 2" OF HMA SURFACE COURSE SHALL BE PLACED OVER TEMPORARY AGGREGATE. THIS WORK SHALL BE PAID FOR AT THE CONTRACT UNIT PRICE FOR HMA SURFACE COURSE, MIX "C", N50.
6. SEE MAINTENANCE OF TRAFFIC GENERAL NOTE 26.



ILLINOIS DEPARTMENT OF TRANSPORTATION  
DISTRICT NO. 1 SCHAUMBURG

**STAGING PLANS  
ILLINOIS ROUTE 59  
PRE-STAGE 1**

SCALE AS SHOWN	DRAWN BY REW
DATE MARCH 18, 2008	CHECKED BY JCM