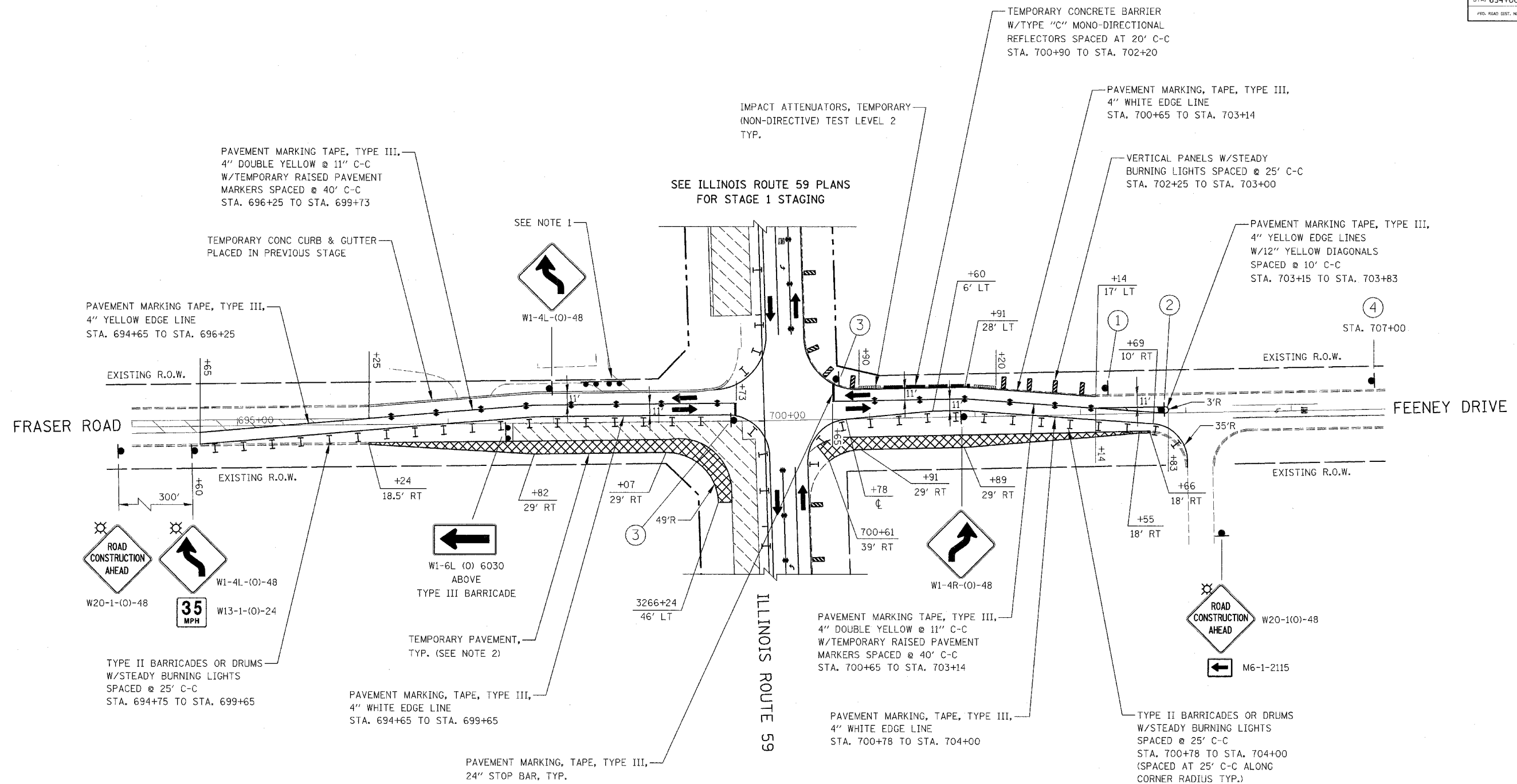


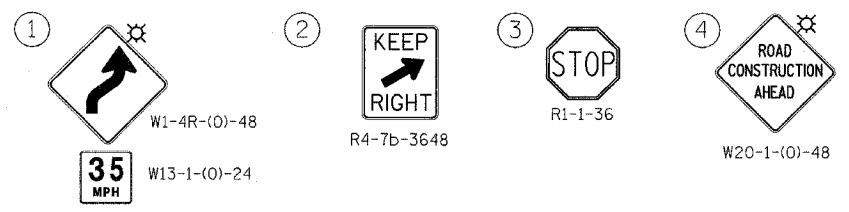
FAP DIST.	SECTION	COUNTY	TOTAL SHEETS	SHEET NO.
338 (113 & 114) R-5	WILL		525	105
STA. 694+00		TO STA. 706+00		
FED. ROAD DIST. NO.	ILLINOIS	FAP 338 (IL RTE. 59)		



NOTES

1. DRIVEWAY CLOSED AT THE RIGHT-OF-WAY IN PREVIOUS STAGE, TO REMAIN CLOSED IN THIS STAGE.
2. SEE TEMPORARY PAVEMENT DETAIL ON MAINTENANCE OF TRAFFIC DETAILS SHEET.

SIGN LEGEND



ILLINOIS DEPARTMENT OF TRANSPORTATION
 DISTRICT NO. 1 SCHAUMBURG
 STAGING PLANS
 FRASER RD. / FEENEY DR.
 STAGE 1

SCALE AS SHOWN
 DATE MARCH 18, 2008

DRAWN BY REW
 CHECKED BY JCM

