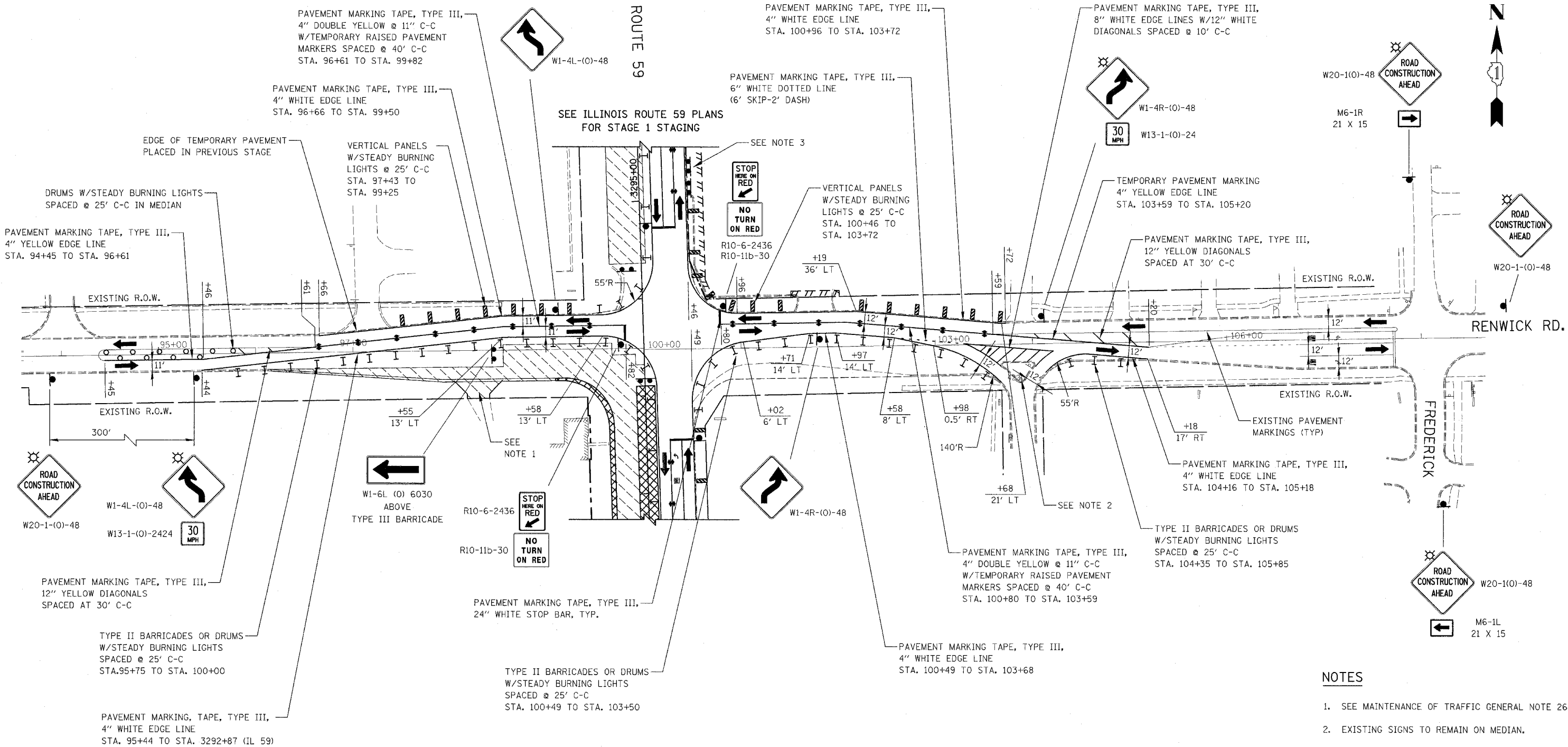


FAP SITE	SECTION	COUNTY	TOTAL SHEETS	SHEET NO.
338 (113 & 114) R-5	WILL		525	106
STA. 95+00		TO STA. 108+00		
FED. ROAD DIST. NO.	ILLINOIS	FAP 338 (IL RTE. 59)		

ILLINOIS ROUTE 59



NOTES

- SEE MAINTENANCE OF TRAFFIC GENERAL NOTE 26.
- EXISTING SIGNS TO REMAIN ON MEDIAN.
- DRIVEWAY CLOSED AT THE RIGHT-OF-WAY IN PREVIOUS STAGE, TO REMAIN CLOSED IN THIS STAGE.

ILLINOIS DEPARTMENT OF TRANSPORTATION  
DISTRICT NO. 1 SCHAUMBURG

STAGING PLANS  
RENWICK ROAD  
STAGE 1

SCALE AS SHOWN  
DATE MARCH 18, 2008

DRAWN BY REW  
CHECKED BY JCM

