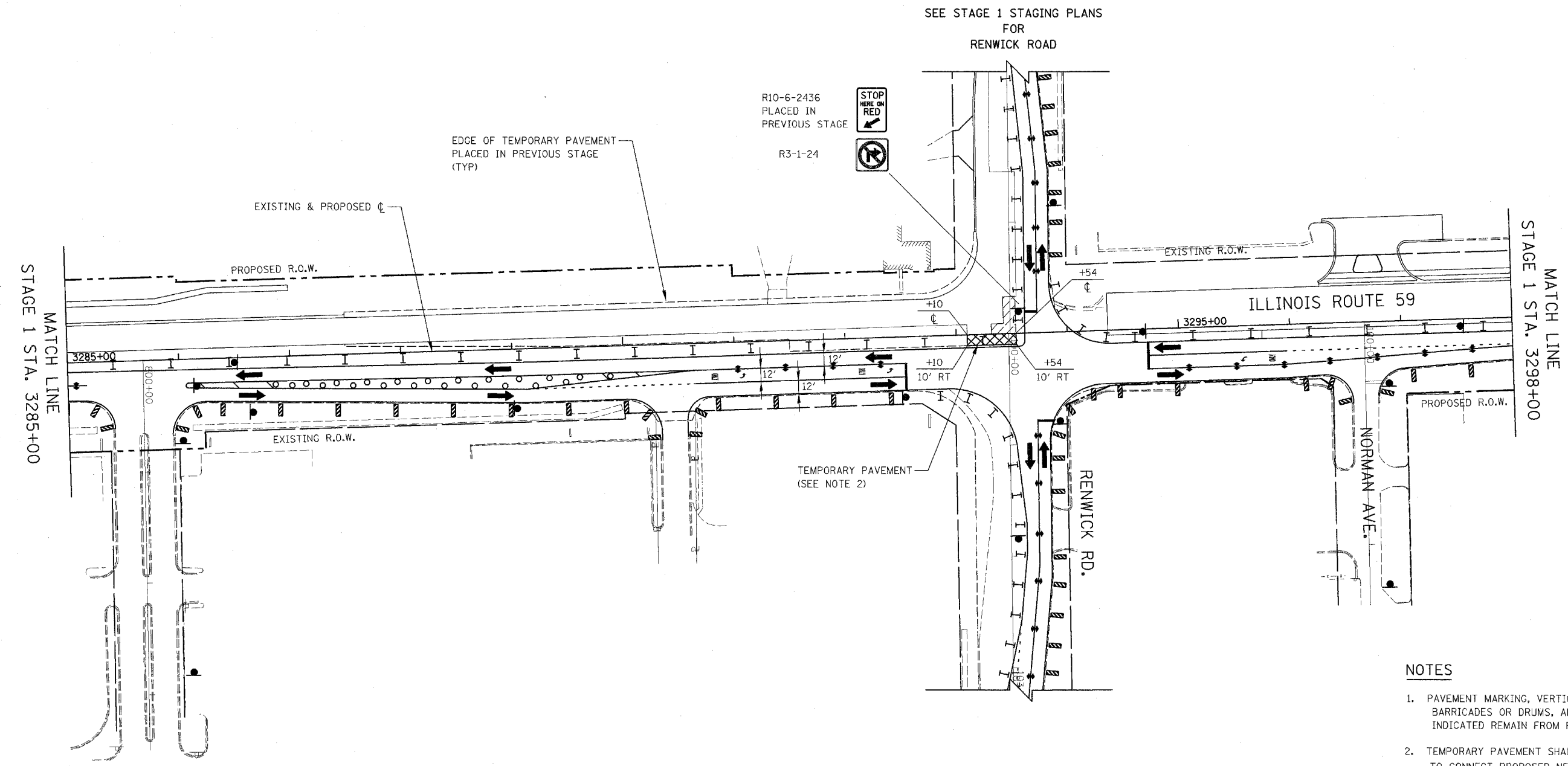


CONTRACT NO. 62417

| | | | | |
|---------------------|-----------------|----------------------|--------------|-----------|
| FAP DIST. | SECTION | COUNTY | TOTAL SHEETS | SHEET NO. |
| 338 | (113 & 114) R-5 | WILL | 525 | 111 |
| STA. 3285+00 | | TO STA. 3298+00 | | |
| FED. ROAD DIST. NO. | ILLINOIS | FAP 338 (IL RTE. 59) | | |



SEE STAGE 1 STAGING PLANS FOR RENWICK ROAD

R10-6-2436 PLACED IN PREVIOUS STAGE
R3-1-24



EDGE OF TEMPORARY PAVEMENT PLACED IN PREVIOUS STAGE (TYP)

EXISTING & PROPOSED

PROPOSED R.O.W.

MATCH LINE
STAGE 1 STA. 3285+00

3285+00

3290+00

EXISTING R.O.W.

TEMPORARY PAVEMENT (SEE NOTE 2)

+10

10' RT

+54

10' RT

RENWICK RD.

EXISTING R.O.W.

ILLINOIS ROUTE 59

3295+00

PROPOSED R.O.W.

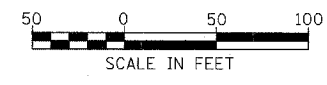
MATCH LINE
STAGE 1 STA. 3298+00

NORMAN AVE.

NOTES

1. PAVEMENT MARKING, VERTICAL PANELS, TYPE II BARRICADES OR DRUMS, AND SIGNAGE NOT INDICATED REMAIN FROM PREVIOUS STAGE.
2. TEMPORARY PAVEMENT SHALL BE CONSTRUCTED TO CONNECT PROPOSED NEW PAVEMENT TO THE EXISTING PAVEMENT.
3. SEE MAINTENANCE OF TRAFFIC GENERAL NOTES 35 & 36.

ILLINOIS DEPARTMENT OF TRANSPORTATION
DISTRICT NO. 1 SCHAUMBURG
STAGING PLANS
ILLINOIS ROUTE 59
STAGE 1A



Rev. 05-01-08 JCM

SCALE AS SHOWN
DATE MARCH 18, 2008
DRAWN BY REW
CHECKED BY JCM