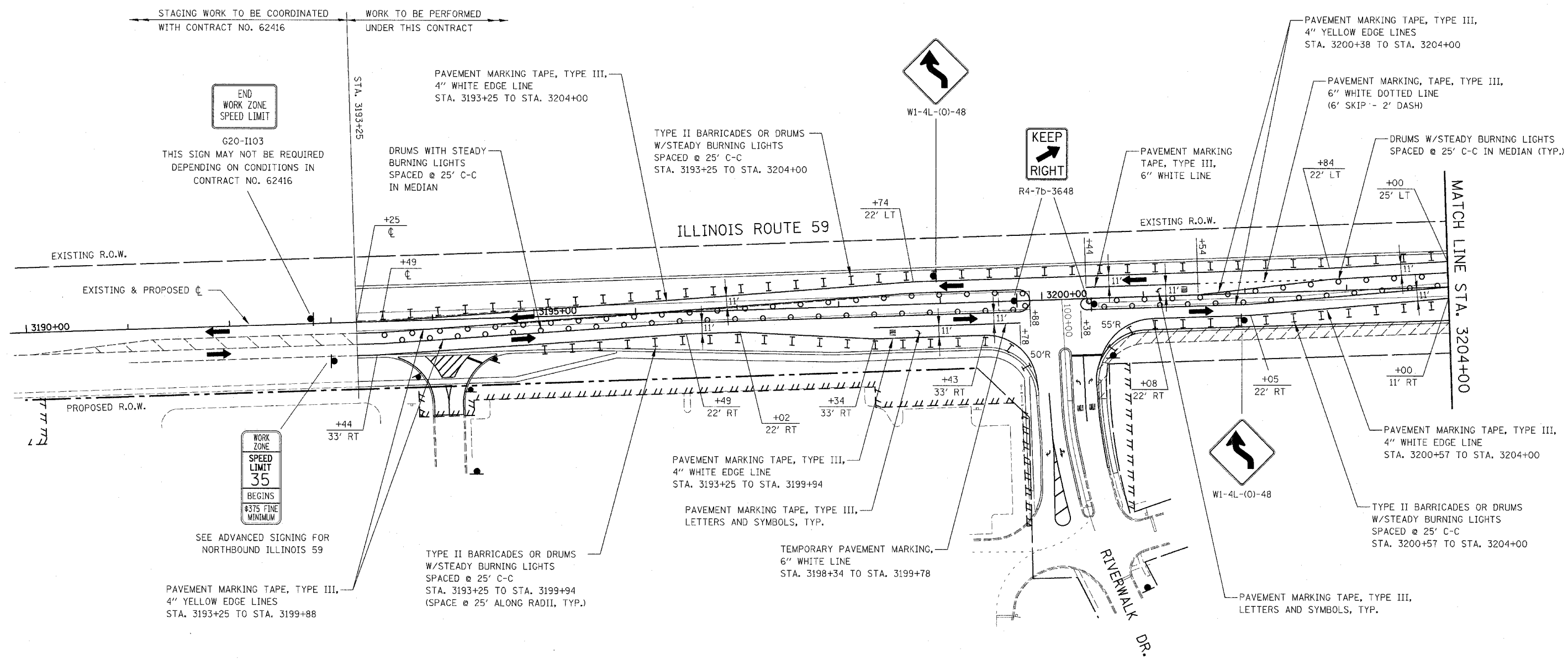


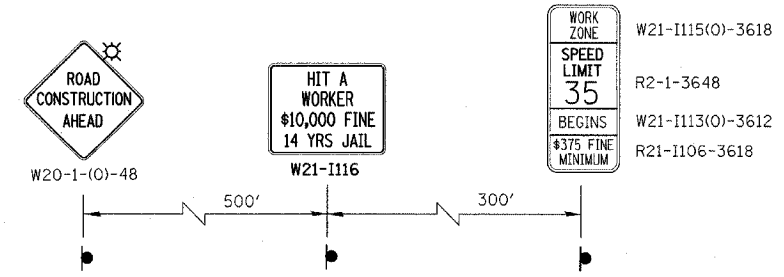
FAP DIST.	SECTION	COUNTY	TOTAL SHEETS	SHEET NO.
338	(113 & 114) R-5	WILL	525	117
STA. 3190+00		TO STA. 3204+00		
FED. ROAD DIST. NO.	BARRETS	FAP 338 (IL RTE. 59)		



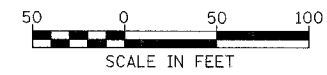
LEGEND

- CONSTRUCTION WORK ZONE
- TEMPORARY PAVEMENT PLACED IN THIS STAGE
- DIRECTION OF TRAFFIC
- TYPE II BARRICADES OR DRUMS
- CHANNELIZATION DRUM

- VERTICAL PANEL WITH STEADY BURNING LIGHT
- SIGN LOCATION
- TYPE III BARRICADE LOCATION
- FLASHING YELLOW LIGHT
- TEMPORARY RAISED REFLECTIVE PAVEMENT MARKER



ADVANCE SIGNING FOR NORTHBOUND ILLINOIS 59
(SEE NOTES 2 & 3)



Rev. 05-01-08 JCM

NOTES

1. PAVEMENT MARKING, VERTICAL PANELS, TYPE II BARRICADES OR DRUMS, AND SIGNAGE NOT INDICATED REMAIN FROM PREVIOUS STAGE.
2. ADVANCE SIGN LOCATIONS SHALL BE COORDINATED WITH ADJACENT CONTRACT. "ROAD CONSTRUCTION AHEAD" SIGN SHALL BE PLACED WHEN WARRANTED BY WORK ZONE CONDITIONS OR AS DIRECTED BY THE ENGINEER.
3. SEE MAINTENANCE OF TRAFFIC GENERAL NOTES 35 & 36.

ILLINOIS DEPARTMENT OF TRANSPORTATION
DISTRICT NO. 1 SCHAUMBURG
STAGING PLANS
ILLINOIS ROUTE 59
STAGE 2

SCALE AS SHOWN
DATE MARCH 18, 2008
DRAWN BY REW
CHECKED BY JCM