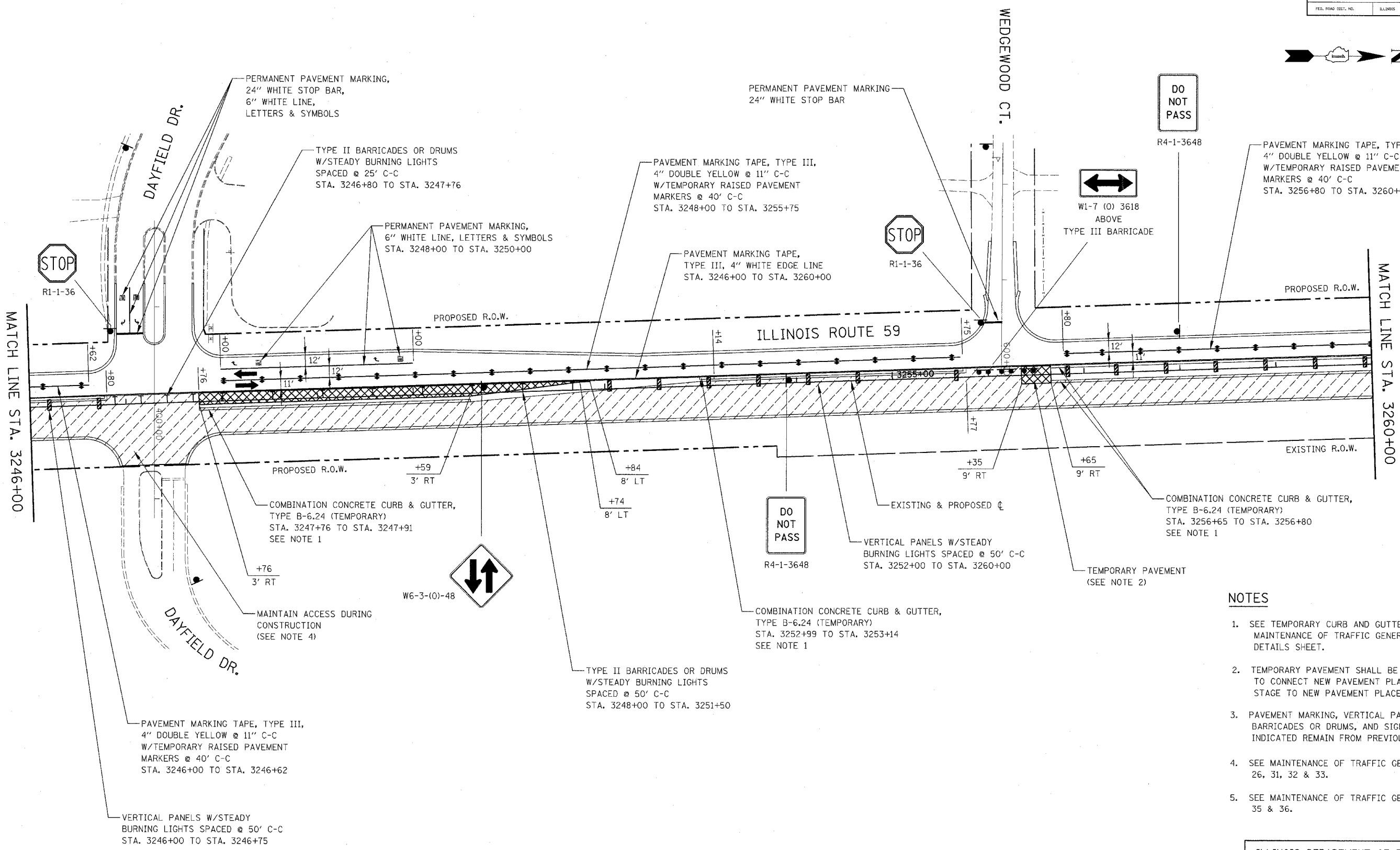
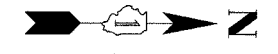


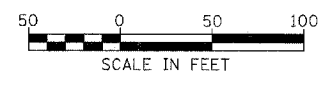
CONTRACT NO. 62417

FAP NO.	SECTION	COUNTY	TOTAL SHEETS	SHEET NO.
338	(113 & 114) R-5	WILL	525	121
STA. 3246+00		TO STA. 3260+00		
FED. ROAD DIST. NO.		ILLINOIS	FAP 338 (IL RTE. 59)	



1. SEE TEMPORARY CURB AND GUTTER DETAIL ON MAINTENANCE OF TRAFFIC GENERAL NOTES AND DETAILS SHEET.
2. TEMPORARY PAVEMENT SHALL BE CONSTRUCTED TO CONNECT NEW PAVEMENT PLACED IN PREVIOUS STAGE TO NEW PAVEMENT PLACED IN THIS STAGE.
3. PAVEMENT MARKING, VERTICAL PANELS, TYPE II BARRICADES OR DRUMS, AND SIGNAGE NOT INDICATED REMAIN FROM PREVIOUS STAGE.
4. SEE MAINTENANCE OF TRAFFIC GENERAL NOTES 26, 31, 32 & 33.
5. SEE MAINTENANCE OF TRAFFIC GENERAL NOTES 35 & 36.

ILLINOIS DEPARTMENT OF TRANSPORTATION
 DISTRICT NO. 1 SCHAUMBURG
 STAGING PLANS
 ILLINOIS ROUTE 59
 STAGE 2



Rev. 05-01-08 JCM

SCALE AS SHOWN
 DATE MARCH 18, 2008
 DRAWN BY REW
 CHECKED BY JCM